

目 录

CONTENTS

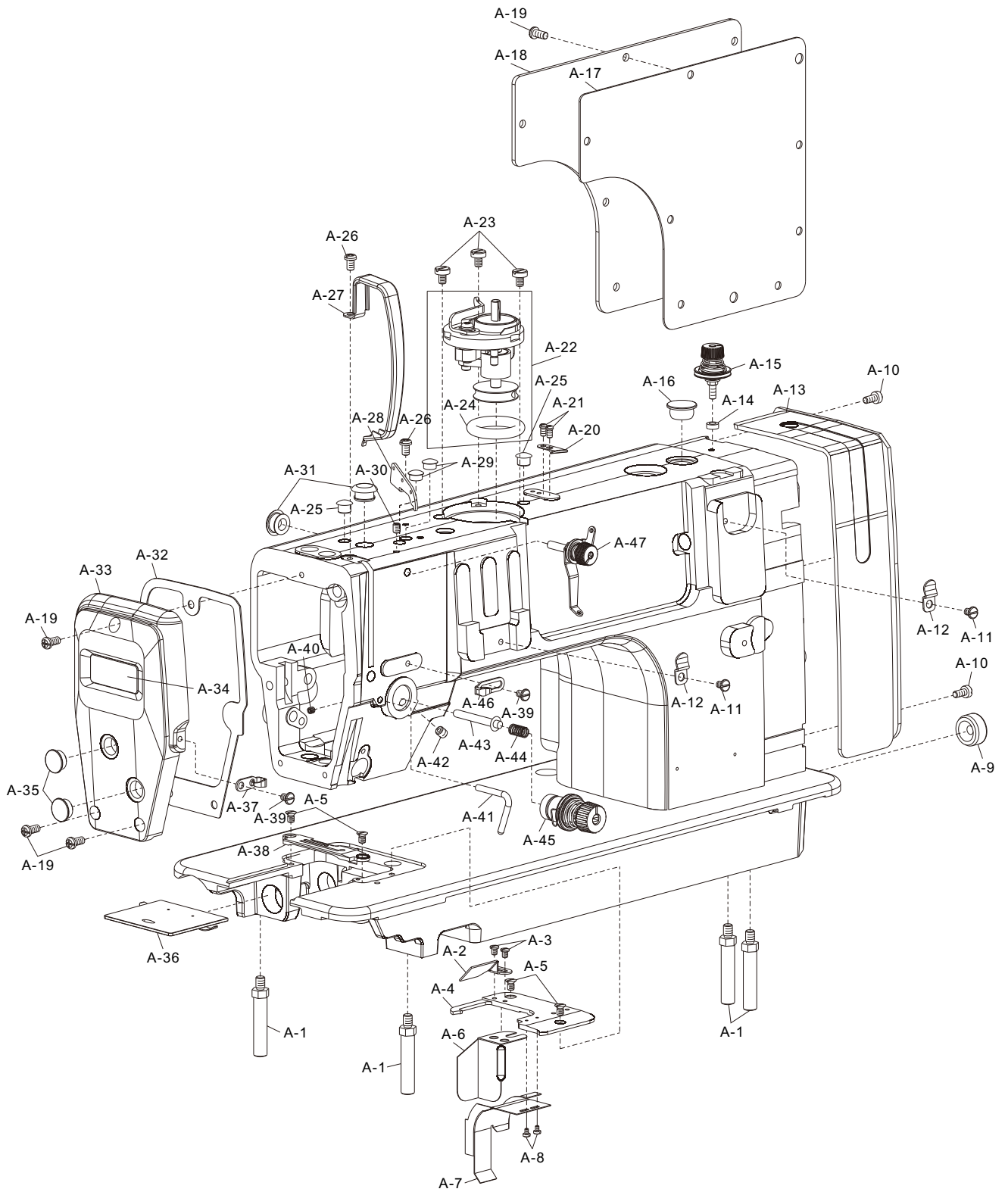
零件样本 Parts Book

A	机壳分组件 Machine Frame & Miscellaneous Cover Components	35
B	上轴、挑线分组件 Main Shaft & Thread Take-up Cover Components	37
C	抬压脚分组件 Hang Lifter & Tension Release Components	39
D	勾线分组件 Hook Of Driving Shaft Components	41
E	送料分组件 Feed Mechanism Components	43
F	切刀控制分组件 Cutter Control Components	45
G	剪线分组件 Thread trimmer Components	47
H	电控分组件 Drive-by-wire Components	49
I	润滑分组件 Lubrication Components	51
J	油盘、膝抬压脚分组件 Presser Foot Components Of Oil Plate Knee Lift	53
K	过线架分组件 Components Of Thread-running Stand	55
L	附件 Auxiliaries	57

A

机壳分组件

Machine Frame & Miscellaneous Cover Components



A

机壳分组件

Machine Frame & Miscellaneous Cover Components

序号 Ref. No.	件号 Part No.	名称	Name of part	数量 QTY	备注 Remark
A-1	10002577	底板支柱	Bed screw stud	4	
A-2	10045827	布屑导板	Scraps guide plate	1	
A-3	10011020	SM9/64"×40螺钉	Screw SM9/64"×40	2	
A-4	10045826	排屑斗板	Clearance hole plate	1	
A-5	10011566	SM11/64"×40螺钉	Screw SM11/64"×40	4	
A-6	10067913	布屑下料挡板	Shelter scraps plate	1	
A-7	10067915	排屑斗	Clearance-hole	1	
A-8	10010744	SM3/32"×56螺钉	Screw SM3/32"×56	2	
A-9	10008941	橡胶塞	Rubber plug	1	
A-10	10002881	M4×8螺钉	Screw M4×8	2	
A-11	10003382	SM11/64"×40螺钉	Screw SM11/64"×40	2	
A-12	10062047	滑扣簧	Slide buckle	2	
A-13	*	塑料标识板	Plastic plate	1	
A-14	10062565	绕线夹线器垫圈	Washer	1	
A-15	10062049	绕线夹线器组件	Bobbin thread tension ASM	1	
A-16	10009576	橡胶塞	Rubber plug	1	
A-17	10066540	后窗板垫	Side plate gasket	1	
A-18	20024889	后窗板	Side plate	1	
A-19	10008972	SM3/16"×28螺钉	Screw SM3/16"×28	12	
A-20	10011149	绕线切刀	Thread cutter	1	
A-21	10050423	SM9/64"×40螺钉	Screw SM9/64"×40	2	
A-22	10031086	绕线器	Bobbin wider ASM.	1	
A-23	10004380	SM3/16"×32螺钉	Screw SM3/16"×32	3	
A-24	10008773	橡胶轮	Rubber ring	1	
A-25	10008943	橡胶塞	Rubber ring	2	
A-26	10008934	SM3/16"×28螺钉	Screw SM3/16"×28	2	
A-27	20027103	挑线杆护罩	Thread take-up lever cover	1	
A-28	10052992	过线板	Thread tension guide	1	
A-29	10050435	橡胶塞	Rubber ring	2	
A-30	10041529	SM3/16"×28螺钉	Screw SM3/16"×28	1	
A-31	10008942	橡胶塞	Rubber ring	2	
A-32	10066759	面板垫	Face plate gasket	1	
A-33	20025552	面板	Face plate	1	
A-34	*	面板装饰牌	Decorative board	1	
A-35	10008977	橡胶塞	Rubber ring	2	
A-36	10013706	推板部件	Push plate ASM.	1	
A-37	10008937	左线钩	Arm thread guide left	1	
A-38	10045639	针板组件1/8	Needle plate 1/8	1	
A-39	10008973	SM11/64"×40螺钉	Screw SM11/64"×40	2	
A-40	10009074	M4螺钉	Screw M4	1	
A-41	10039823	缓线钩	Presser bar thread guide	1	
A-42	10006264	SM15/64"×28螺钉	Screw SM15/64"×28	1	
A-43	10062374	松线辅钉	Tension release supporting pin	1	
A-44	10010642	弹簧	Spring	1	
A-45	10062050	夹线器部件	Thread take-up device	1	
A-46	10008940	右线钩	Arm thread guide right	1	
A-47	10062051	上夹线器部件	Top thread tension ASM	1	

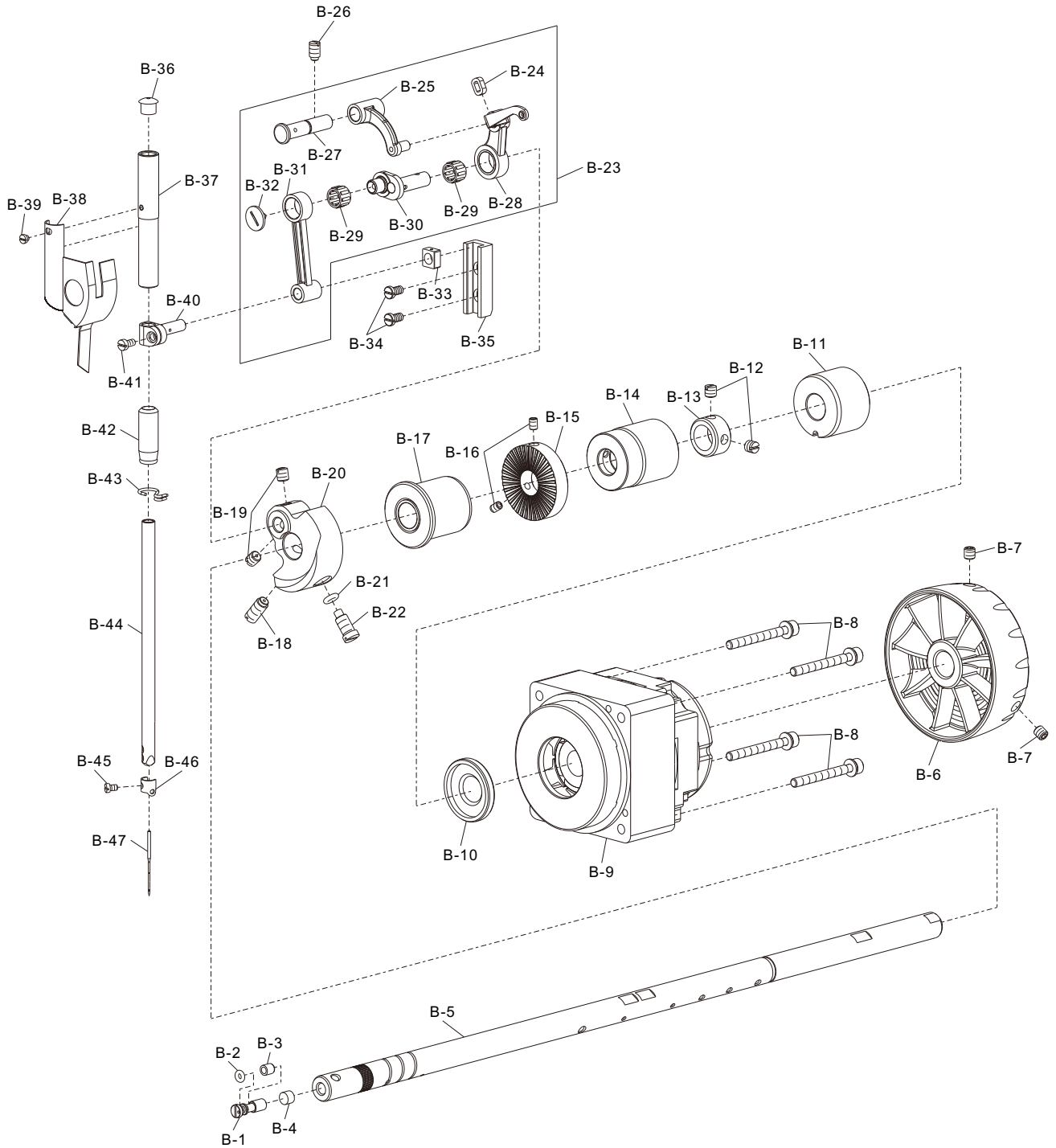
“*” 具体内容需向客服咨询

“*” Specific content need to consult customer service

B

上轴、挑线分组件

Main Shaft & Thread Take-up Cover Components



B

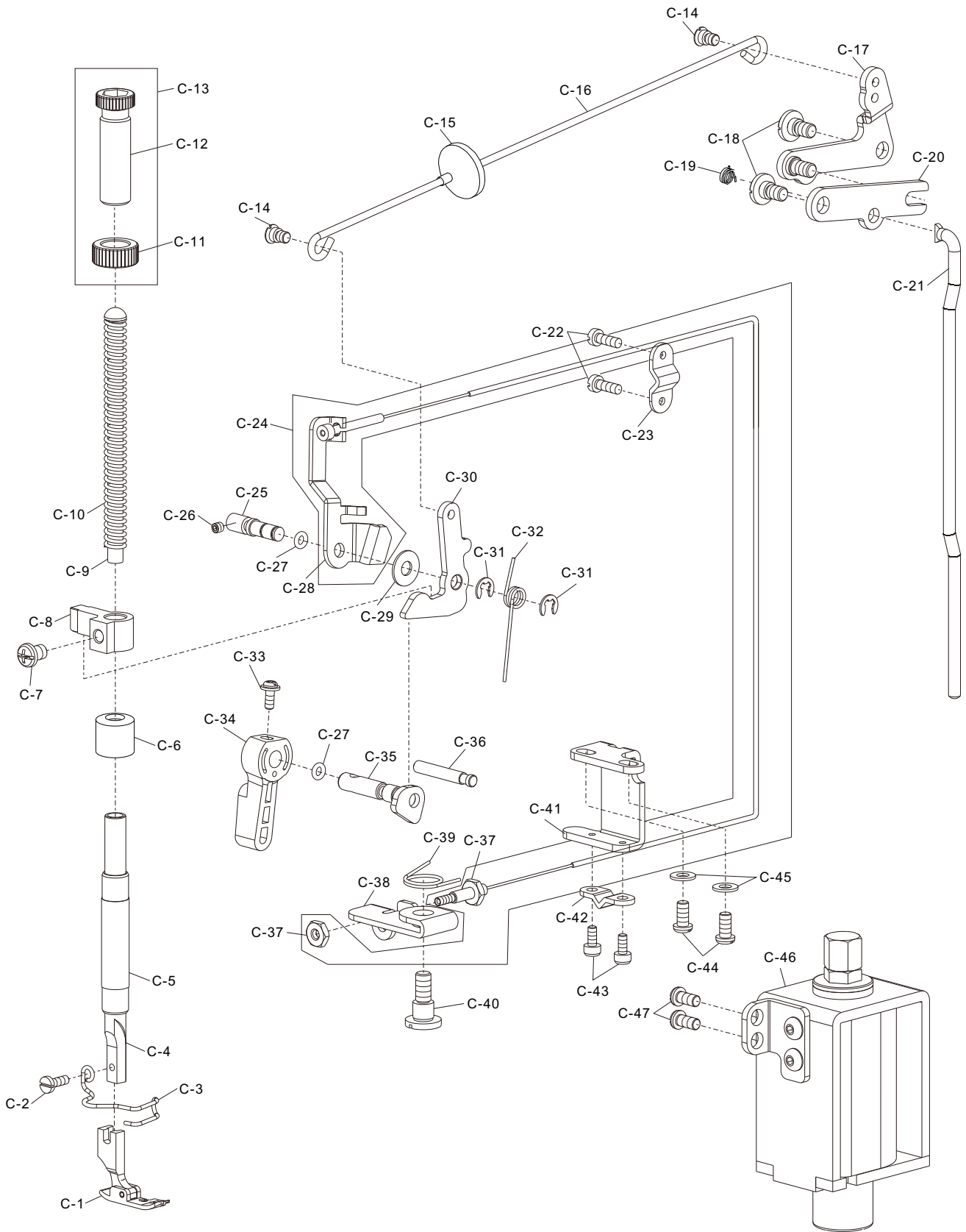
上轴、挑线分组件

Main Shaft & Thread Take-up Cover Components

序号 Ref. No.	件号 Part No.	名称	Name of part	数量 QTY	备注 Remark
B-1	10010504	油量调节销	Adjusting pin	1	
B-2	10010538	6.46×1.78 O形圈	O-ring 6.46×1.78	1	
B-3	10010540	油量调节销套	Sleeve of adjusting pin	1	
B-4	10010541	毛毡	Roler felt	1	
B-5	10069522	上轴	Main shaft	1	
B-6	20023713	上轮	Head wheel	1	
B-7	10011232	M6×6螺钉	Screw M6×6	2	
B-8	10059025	M5×35螺钉组件	Screw M5 ASM.	4	
B-9	10068155	分体电机组件	Motor ASM.	1	
B-10	10058049	油封	Oil seal	1	
B-11	10066834	上轴后轴套	Shaft sleeve	1	
B-12	10005020	SM1/4"×40螺钉	Screw SM1/4"×40	2	
B-13	10010542	挡圈	Thrust collar	1	
B-14	10007239	上轴中轴套	Shaft sleeve	1	
B-15	10004472	绕线主动轮	Driving wheel	1	
B-16	10012062	SM11/64"×40螺钉	Screw SM11/64"×40	2	
B-17	10044580	上轴前轴套	Shaft sleeve	1	
B-18	10010082	SM9/32"×28螺钉	Screw SM9/32"×28	1	
B-19	10010065	SM1/4"×40螺钉	Screw SM1/4"×40	2	
B-20	10054695	针杆曲柄	Crank	1	
B-21	10010534	9.2×2.4 O形圈	O-ring 9.2×2.4	1	
B-22	10010545	针杆曲柄定位螺钉	Screw	1	
B-23	20017446	挑线杆组件	Thread take-up lever ASM.	1	
B-24	10010539	挑线杆防油圈	Oil resistant cover	1	
B-25	10010535	挑线连杆	Connecting rod	1	
B-26	10010083	SM15/64"×28螺钉	Screw SM15/64"×28	1	
B-27	20019236	挑线连杆销组件	Pin ASM.	1	
B-28	10004158	挑线杆	Thread take-up lever	1	
B-29	10014107	K8×12×7.8滚针轴承	Needle bearing K8×12×7.8	2	
B-30	10004144	挑线曲柄部件	Crank ASM.	1	
B-31	10010592	针杆连杆	Connecting rod	1	
B-32	10010537	挑线曲柄左旋螺钉	Screw	1	
B-33	10053559	针杆连接柱滑块	Sliding block	1	
B-34	10043360	滑块导轨螺钉	Screw	2	
B-35	10053558	滑块导轨	Slide guide	1	
B-36	10010587	橡胶塞	Rubber plug	1	
B-37	10011063	针杆上轴套	Shaft sleeve	1	
B-38	10066760	面部防油板部件	ARM oil shield ASM.	1	
B-39	10005558	SM1/8"×44螺钉	Screw SM1/8"×44	1	
B-40	10043355	针杆连接柱	Joint pin	1	
B-41	10043356	SM9/64"×40螺钉	Screw SM9/64"×40	1	
B-42	10014117	针杆下轴套	Shaft sleeve	1	
B-43	10005943	针杆下套线钩	Thread guide	1	
B-44	10045046	针杆	Needle bar	1	
B-45	10010588	SM1/8"×44螺钉	Screw SM1/8"×44	1	
B-46	10045047	针杆过线环	Thread guide	1	
B-47	*	DB×1 14#机针	Needle DB×1 14#	1	

“*” 具体内容需向客服咨询

“*” Specific content need to consult customer service





抬压脚分组件
Hang Lifter & Tension Release Components

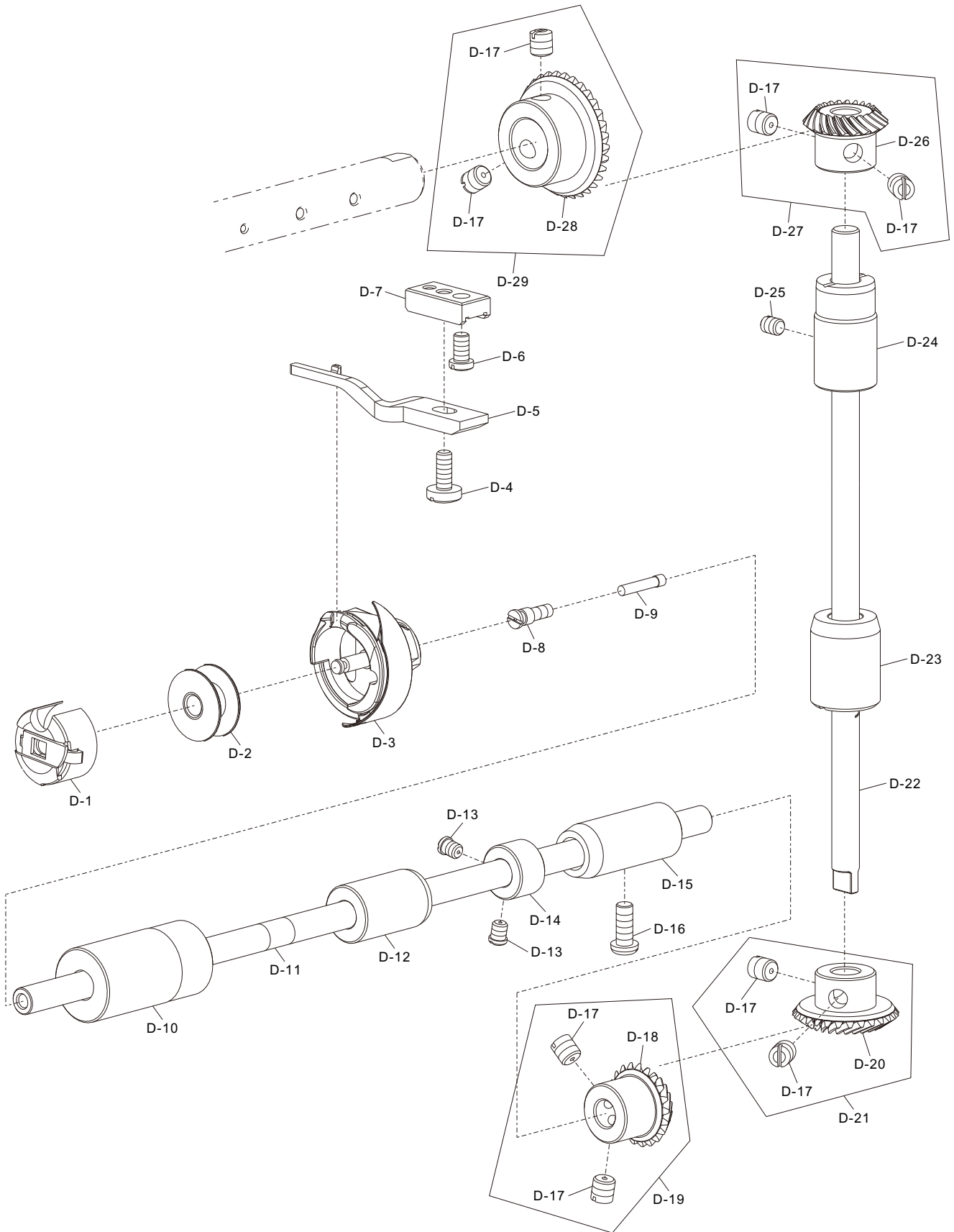
序号 Ref. No.	件号 Part No.	名称	Name of part	数量 QTY	备注 Remark
C-1	10044596	压脚组件	Presser foot ASM.	1	
C-2	10044148	SM9/64"×40螺钉	Screw SM9/64"×40	1	
C-3	10045062	护指架	Finger frame	1	
C-4	10069587	压杆	Presser bar	1	
C-5	10014118	压杆轴套	Shaft sleeve	1	
C-6	10074088	压紧杆防油罩	Oil protector cover	1	
C-7	10040504	M6×8螺钉	Screw M6×8	1	
C-8	10039365	压杆导架	Presser guide bar bracket	1	
C-9	10004439	调压导杆	Presser guide bar	1	
C-10	10004473	调压弹簧	Spring	1	
C-11	10062022	调压螺母	Nut	1	
C-12	10062021	调压螺钉	Screw	1	
C-13	10062052	调压螺钉组件	Screw ASM.	1	
C-14	10010651	SM3/16"×32螺钉	Screw SM3/16"×32	2	
C-15	10053351	隔油罩	Oil shield	1	
C-16	10061689	抬压脚拉杆	Lifting lever connecting rod	1	
C-17	10057556	抬压脚后杠杆组件	Lifting lever link components ASM.	1	
C-18	10010652	后杠杆轴位螺钉	Screw	2	
C-19	10009205	弹簧	Spring	1	
C-20	10057557	抬压脚连接板	Lifting lever connecting plate	1	
C-21	10057559	抬压脚顶杆	Connecting rod vertical	1	
C-22	10009037	M4×12螺钉	Screw M4×12	2	
C-23	10039378	钢丝绳压板	Platen	1	
C-24	10039380	抬压脚拉线组件	Foot lifter pull thread components ASM.	1	
C-25	10039373	松线顶板销	Pin	1	
C-26	10009074	M4×4螺钉	Screw M4×4	1	
C-27	10010027	3.68×1.78 O形圈	O-ring 3.68×1.78	2	
C-28	10039372	松线顶板	Tension release plate	1	
C-29	10073060	平垫圈	Snap ring	1	
C-30	10050188	压脚升降板	Lifting lever	1	
C-31	10013038	5×0.8挡圈	Closing ring 5×0.8	2	
C-32	10052046	压脚升降板复位簧	Spring	1	
C-33	10010016	SM9/64"×40螺钉	Screw SM9/64"×40	1	
C-34	10062023	压脚扳手	Hand lifter	1	
C-35	10050190	压脚扳手凸轮部件	Hand lifter CAM ASM.	1	
C-36	10039374	限位销	Pin	1	
C-37	10005834	SM3/16"×32螺母	Nut SM3/16"×32	2	
C-38	10008860	松线座	Loosing plate	1	
C-39	10008834	松线复位簧	Spring	1	
C-40	10012467	松线座螺钉	Screw	1	
C-41	10008811	松线钢绳座	Loosing line plate	1	
C-42	10013615	挡线板	Fixing shutter	1	
C-43	10006624	SM9/64"×40螺钉	Screw SM9/64"×40	2	
C-44	10008972	SM3/16"×28螺钉	Screw SM3/16"×28	2	
C-45	10011653	5.2×10.5×1垫圈	Washer 5.2×10.5×1	2	
C-46	10068482	抬压电磁铁	Electromagnes	1	
C-47	10000134	M5×10螺钉	Screw M5×10	4	

“*” 具体内容需向客服咨询

“*” Specific content need to consult customer service

D

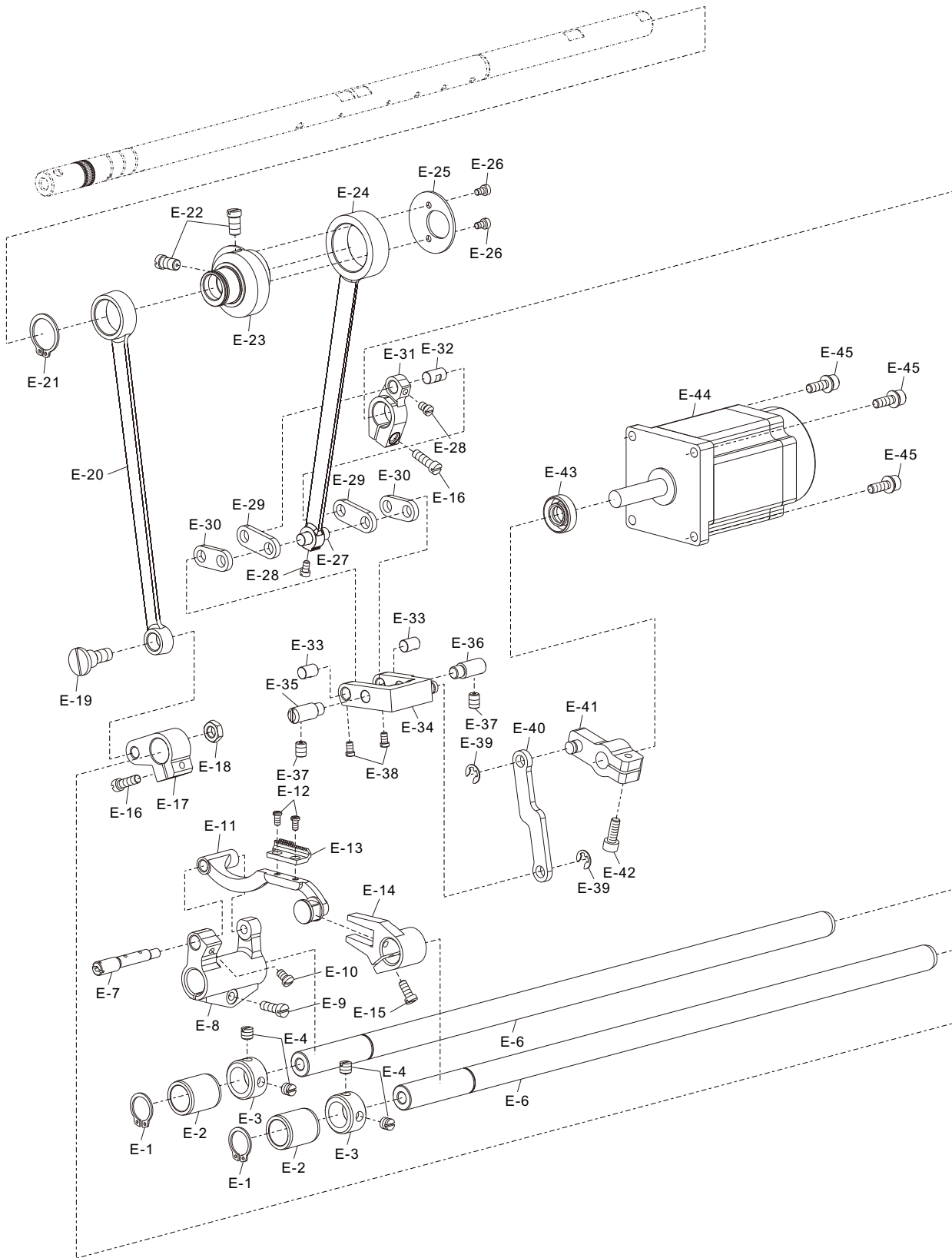
勾线分组件 Hook Of Driving Shaft Components



勾线分组件 Hook Of Driving Shaft Components

序号 Ref. No.	件号 Part No.	名称	Name of part	数量 QTY	备注 Remark
D-1	*	梭壳	Bobbin case	1	
D-2	10025484	梭芯	Bobbin	1	
D-3	*	旋梭	Hook	1	
D-4	10011101	SM11/64"×40螺钉	Screw SM11/64"×40	1	
D-5	10031260	旋梭定位钩	Positioning finger	1	
D-6	10043360	SM11/64"×40螺钉	Screw SM11/64"×40	1	
D-7	10045823	定刀安装架	Mounting rack	1	
D-8	10010064	下轴限油螺钉	Screw	1	
D-9	10010063	油芯	Oil wick	1	
D-10	10058811	下轴前轴套	Shaft sleeve	1	
D-11	10008821	下轴	Hook driving shaft	1	
D-12	10008857	下轴中轴套	Shaft sleeve	1	
D-13	10010059	SM11/64"×40螺钉	Screw SM11/64"×40	2	
D-14	10010058	挡圈	Thrust collar	1	
D-15	10007266	下轴后轴套	Shaft sleeve	1	
D-16	10010030	SM3/16"×28螺钉	Screw SM3/16"×28	1	
D-17	10010065	SM1/4"×40螺钉	Screw SM1/4"×40	8	
D-18	10003937	下轴伞齿轮	Gear	1	
D-19	10002560	下轴伞齿轮组件	Gear ASM.	1	
D-20	10010029	竖轴下伞齿轮	Gear	1	
D-21	10002509	竖轴下伞齿轮组件	Gear ASM.	1	
D-22	10010057	竖轴	Upright shaft	1	
D-23	10007235	竖轴下轴套	Shaft sleeve	1	
D-24	10007267	竖轴上轴套	Shaft sleeve	1	
D-25	10041529	SM3/16"×28螺钉	Screw SM3/16"×28	1	
D-26	10010062	竖轴上伞齿轮	Gear	1	
D-27	10002561	竖轴上伞齿轮组件	Gear ASM.	1	
D-28	10010056	上轴伞齿轮	Gear	1	
D-29	10002445	上轴伞齿轮组件	Gear ASM.	1	

** 具体内容需向客服咨询
** Specific content need to consult customer service

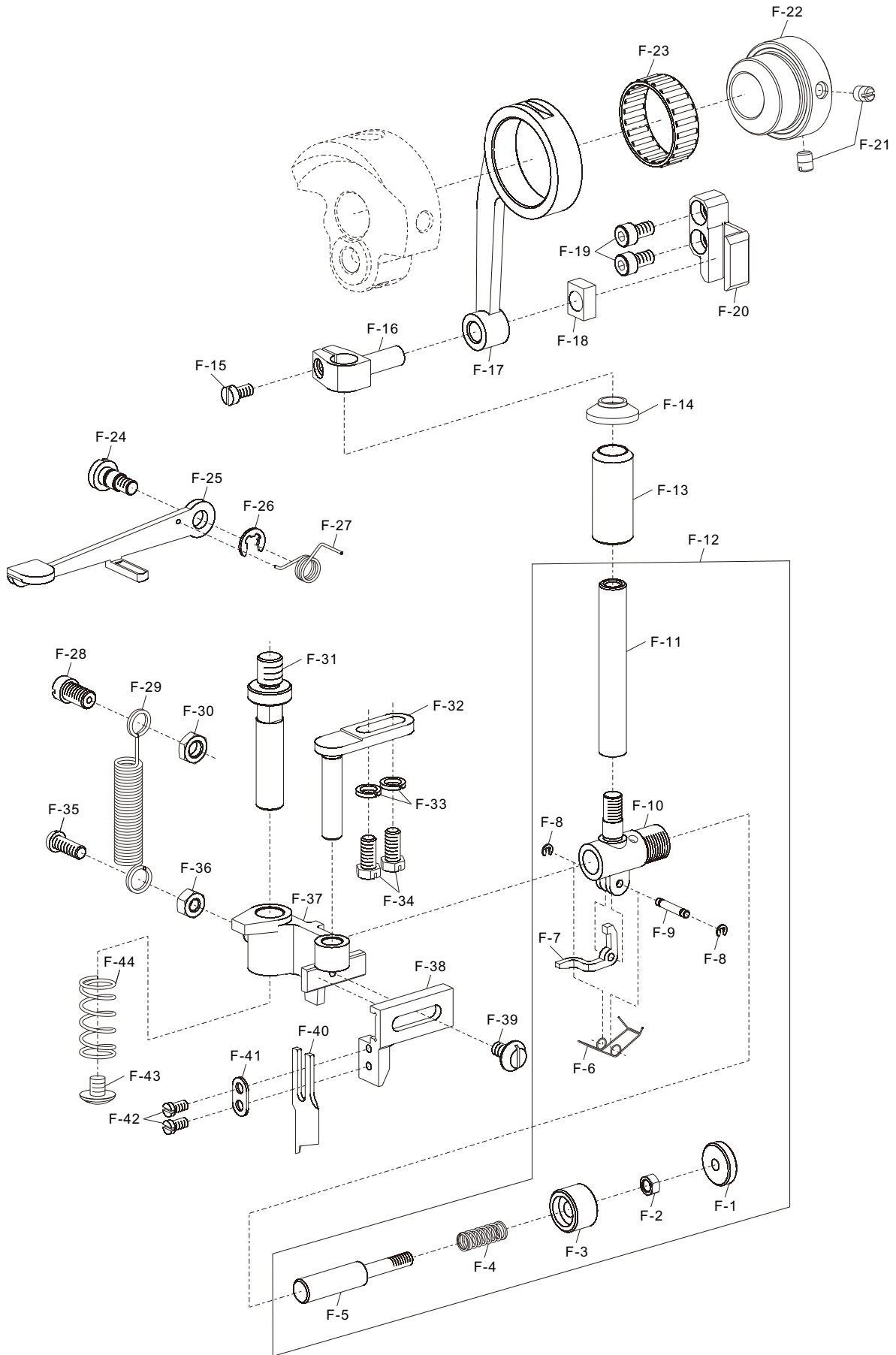




送料分组件
Feed Mechanism Components

序号 Ref. No.	件号 Part No.	名称	Name of part	数量 QTY	备注 Remark
E-1	10010090	13.8×1挡圈	Closing ring 13.8×1	2	
E-2	10014116	送料拾牙轴轴套	Shaft sleeve	2	
E-3	10010542	挡圈	Thrust collar	2	
E-4	10038073	SM1/4"×40螺钉	Screw SM1/4"×40	4	
E-5	10010097	拾牙轴	Feed driving shaft	1	
E-6	10010073	送料轴	Feed rocker shaft	1	
E-7	10004440	牙架座偏心销	Pin	1	
E-8	10004474	牙架座	Feed bar driving crank	1	
E-9	10004993	SM3/16"×28螺钉	Screw SM3/16"×28	1	
E-10	10010074	SM11/64"×40螺钉	Screw SM11/64"×40	1	
E-11	10067264	牙架部件	Feed bar ASM.	1	
E-12	10010099	SM1/8"×44螺钉	Screw SM1/8"×44	2	
E-13	10044601	送料牙1/8	Feed dog 1/8	1	
E-14	10010100	拾牙叉形曲柄	Crank	1	
E-15	10004628	SM11/64"×40螺钉	Screw SM11/64"×40	1	
E-16	10010095	SM3/16"×28螺钉	Screw SM3/16"×28	2	
E-17	10010086	拾牙后曲柄	Crank	1	
E-18	10004475	SM9/32"×28螺母	Nut SM9/32"×28	1	
E-19	10010091	拾牙连杆轴位螺钉	Screw	1	
E-20	10010084	拾牙连杆	Connecting rod	1	
E-21	10010089	18.5×1.2挡圈	Closing ring 18.5×1.2	1	
E-22	10010092	SM1/4"×40螺钉	Screw SM1/4"×40	2	
E-23	10010115	送料偏心轮	Feed drive eccentric cam	1	
E-24	10010072	送料连杆	Connecting rod	1	
E-25	10010098	送料偏心轮盖板	Thrust cover	1	
E-26	10010643	SM9/64"×40螺钉	Screw SM9/64"×40	2	
E-27	10010069	送料连杆销	Pin	1	
E-28	10010071	SM9/64"×40螺钉	Screw SM9/64"×40	2	
E-29	10010068	送料长摆动板	Connecting plate	2	
E-30	10010075	送料短摆动板	Connecting plate	2	
E-31	10010076	送料曲柄	Crank	1	
E-32	10010096	送料曲柄销	Pin	1	
E-33	10010087	短摆动板连接销	Pin	2	
E-34	10005989	送料摆动板座部件	Feed adjusting ASM.	1	
E-35	10010102	送料摆动板座右销	Pin	1	
E-36	10058783	送料摆动板座右销	Pin	1	
E-37	10010678	SM15/64"×28螺钉	Screw SM15/64"×28	2	
E-38	10010197	SM9/64"×40螺钉	Screw SM9/64"×40	2	
E-39	10010649	5.1×0.6挡圈	Closing ring 5.1×0.6	2	
E-40	10067159	步进针距连杆	Feed adjust rod	1	
E-41	10067160	倒送料曲柄组件	Crank	1	
E-42	10011376	M5×12螺钉	Screw M5×12	1	
E-43	10067158	油封	Oil seal	1	
E-44	10068811	针距步进电机	Motor ASM.	1	
E-45	10065628	M5×16组合螺钉	Screw M5×16	3	

“*” 具体内容需向客服咨询
“*” Specific content need to consult customer service



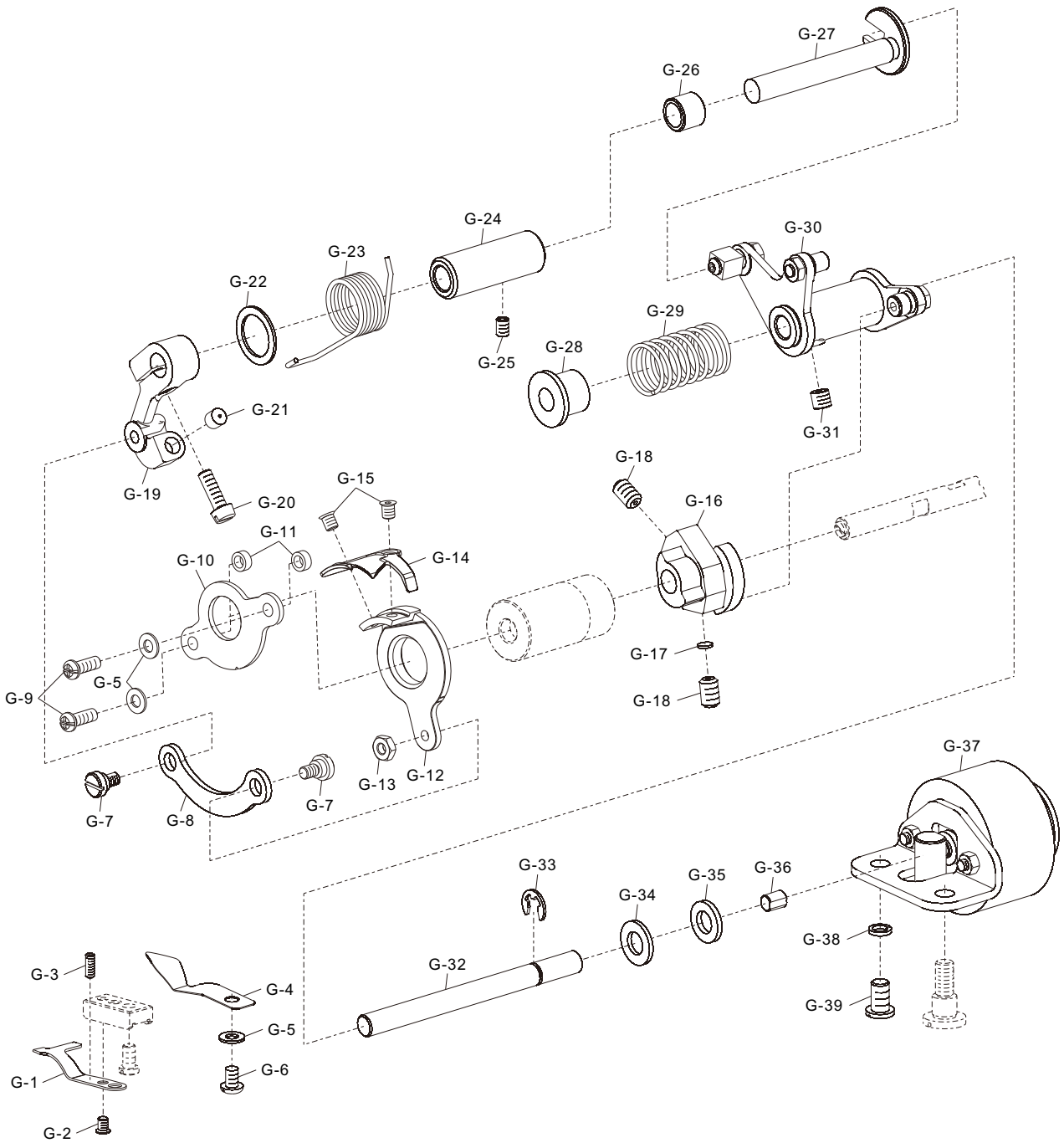
F

切刀控制分组件
Cutter Control Components

序号 Ref. No.	件号 Part No.	名称	Name of part	数量 QTY	备注 Remark
F-1	10044628	控刀拉钮	Knob	1	
F-2	10010106	SM11/64"×40螺母	Nut SM11/64"×40	1	
F-3	10044627	导套盖	Guide bushing cover	1	
F-4	10074073	刀控弹簧	Spring	1	
F-5	10044620	导向架控制销	Pin	1	
F-6	10044622	杠杆簧	Spring	1	
F-7	10044624	切刀控制杠杆	Lever for knife	1	
F-8	10029637	1.5×0.4挡圈	Closing ring 1.5×0.4	2	
F-9	10044623	杠杆连接销	Pin	1	
F-10	10044621	控制销导套	Guide bushing	1	
F-11	10044629	刀杆	Knife bar	1	
F-12	10073370	刀杆组件	Knife bar ASM.	1	
F-13	10059931	刀杆轴套	Shaft sleeve	1	
F-14	10067138	刀杆防油罩	Oil protector cover	1	
F-15	10030286	SM9/64"×40螺钉	Screw SM9/64"×40	1	
F-16	10044631	刀杆接头	Knife bar adaptor	1	
F-17	10073364	刀杆连杆	Connecting rod	1	
F-18	10044632	刀杆接头滑块	Slide block	1	
F-19	10047852	SM11/64"×40螺钉	Screw SM11/64"×40	2	
F-20	10045917	刀杆接头滑块导轨	Guide rail	1	
F-21	10013465	SM1/4"×40螺钉	Screw SM1/4"×40	2	
F-22	10073363	刀杆凸轮	Eccentric cam	1	
F-23	10047398	K25×29×9.7滚针轴承	Needle bearing K25×29×9.7	1	
F-24	10044604	控刀扳手轴位螺钉	Screw	1	
F-25	10044605	控刀扳手	Knife control lever	1	
F-26	10013038	5挡圈	Closing ring 5	1	
F-27	10044606	控刀扳手扭簧	Spring	1	
F-28	10044609	SM15/64"×28螺钉	Screw SM15/64"×28	1	
F-29	10044608	导向架拉簧	Spring	1	
F-30	10012625	SM15/64"×28螺母	Nut SM15/64"×28	1	
F-31	10074071	导向架导柱	Guide plunger	1	
F-32	10074070	导向架导轨	Guiding block	1	
F-33	10009469	5垫圈	Washer 5	2	
F-34	10044613	SM3/16"×28螺钉	Screw SM3/16"×28	2	
F-35	10010900	SM11/64"×40螺钉	Screw SM11/64"×40	1	
F-36	10044610	SM11/64"×40螺母	Nut SM11/64"×40	1	
F-37	10044614	刀架导向架	Guide bracket	1	
F-38	10044615	刀架	Knife holder	1	
F-39	10044616	刀架螺钉	Screw	1	
F-40	10044617	切刀	Cutting knife	1	
F-41	10044618	切刀垫片	Washer	1	
F-42	10044619	SM1/8"×44螺钉	Screw SM1/8"×44	2	
F-43	10062633	SM3/16"×28螺钉	Screw SM3/16"×28	1	
F-44	10074072	导向架复位弹簧	Spring	1	

** 具体内容需向客服咨询

** Specific content need to consult customer service





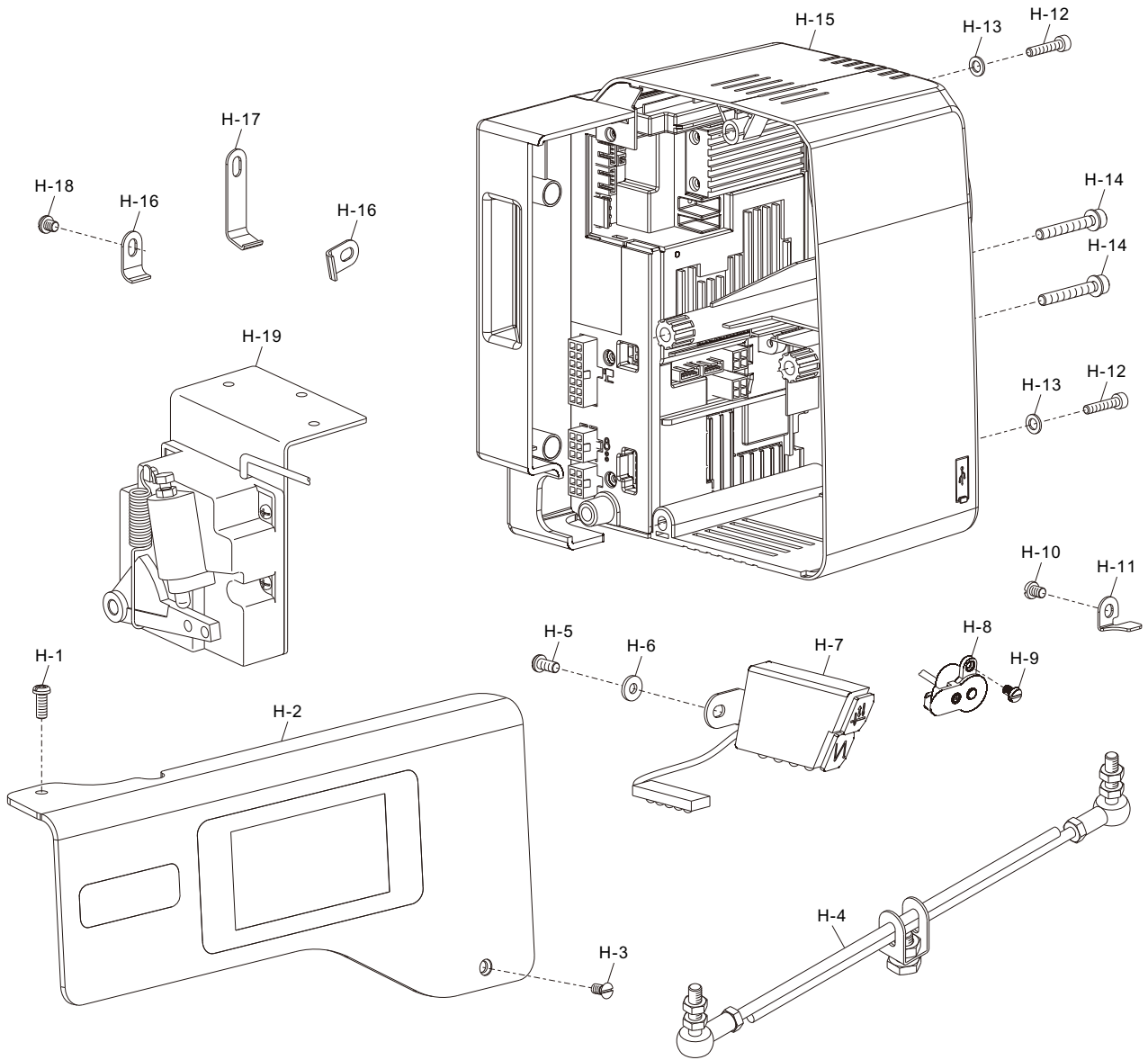
剪线分组件
Thread trimmer Components

序号 Ref. No.	件号 Part No.	名称	Name of part	数量 QTY	备注 Remark
G-1	10011421	定刀	Fixed knife	1	
G-2	10011422	SM9/64"×40螺钉	Screw SM9/64"×40	1	
G-3	10024496	SM1/8"×40螺钉	Screw SM1/8"×40	1	
G-4	10058067	分线器	Dispart	1	
G-5	10013154	9×4.5×0.8垫圈	Washer 9×4.5×0.8	3	
G-6	10014474	SM11/64"×40螺钉	Screw SM11/64"×40	1	
G-7	10011514	SM11/64"×40螺钉	Screw SM11/64"×40	2	
G-8	10070499	刀轴连杆	Knife shaft crack rod	1	
G-9	10010900	SM11/64"×40螺钉	Screw SM11/64"×40	2	
G-10	10069005	刀架压板	Knife holder	1	
G-11	10069004	导套	Guide sleeve	2	
G-12	10004640	动刀架	Round knife bracket	1	
G-13	10011578	SM11/64"×40螺母	Nut SM11/64"×40	1	
G-14	10011494	动刀	Round knife	1	
G-15	10011588	SM11/64"×40螺钉	Screw SM11/64"×40	2	
G-16	10010736	剪线凸轮	Thread trimmer cam	1	
G-17	10023739	剪线凸轮垫	Cam collar	1	
G-18	10013465	SM1/4"×40螺钉	Screw SM1/4"×40	2	
G-19	10058043	切线驱动曲柄	Trimming crank	1	
G-20	10008863	SM3/16"×32螺钉	Screw SM3/16"×32	1	
G-21	10011580	曲柄止动块	Block	1	
G-22	10008865	15.3×21×1垫圈	Washer 15.3×21×1	1	
G-23	10011649	曲柄复位簧	Spring	1	
G-24	10067914	切线轴套	Shaft sleeve	1	
G-25	10012062	SM11/64"×40螺钉	Screw SM11/64"×40	1	
G-26	10011630	曲柄轴短套	Short bushing	1	
G-27	10067912	切刀驱动曲柄轴	Trimming crank shaft	1	
G-28	10014196	弹簧端盖	Spring cover	1	
G-29	10008812	弹簧	Spring	1	
G-30	10011686	切线凸轮曲柄组件	Trimming cam crank ASM.	1	
G-31	10008862	SM1/4"×40螺钉	Screw SM1/4"×40	1	
G-32	10011697	切刀驱动轴	Trimming shaft	1	
G-33	10009654	6×1挡圈	Closing ring 6×1	1	
G-34	10003031	8.4×16×1.6垫圈	Washer 8.4×16×1.6	1	
G-35	10011650	8.2×15×2垫圈	Washer 8.2×15×2	1	
G-36	10050266	消音塞	Sound deadening plug	1	
G-37	10068479	剪线电磁铁组件	Thread trimmer solenoid ASM.	1	
G-38	10003077	6弹簧垫圈	Washer 6	1	
G-39	10011605	SM1/4"×28螺钉	Screw SM1/4"×28	1	

“*” 具体内容需向客服咨询
“*” Specific content need to consult customer service



电控分组件
Drive-by-wire Components



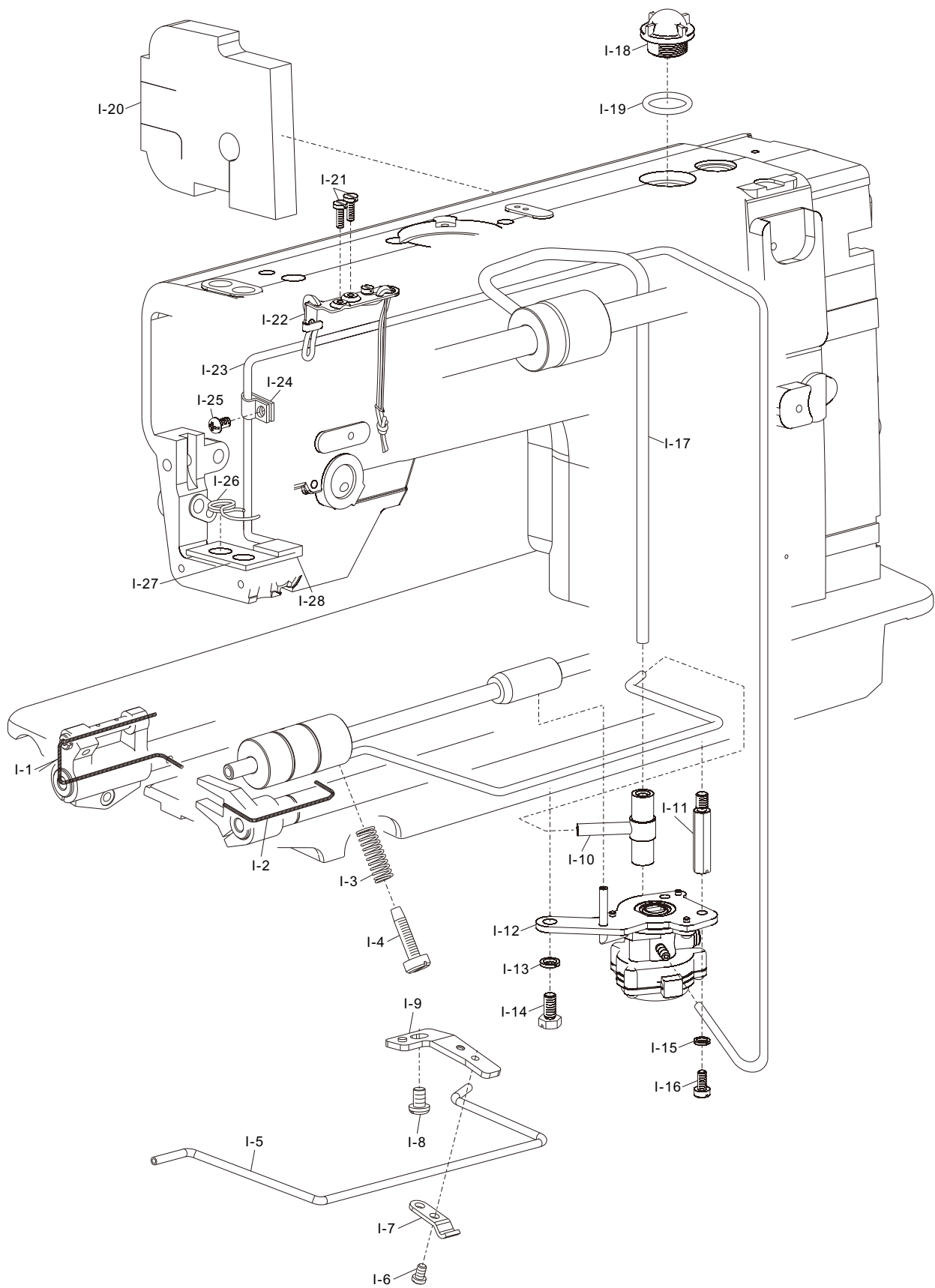


电控分组件
Drive-by-wire Components

序号 Ref. No.	件号 Part No.	名称	Name of part	数量 QTY	备注 Remark
H-1	10063944	SM3/16"×28螺钉	Screw SM3/16"×28	1	
H-2	*	操作屏组件	Operation screen ASM.	1	
H-3	10043305	SM11/64"×40螺钉	Screw SM11/64"×40	1	
H-4	10042945	踏板连杆组件	Pedal control rod ASM.	1	
H-5	10008934	SM3/16"×28螺钉	Screw SM3/16"×28	1	
H-6	10011168	4.8×11.6×1.6垫圈	Washer 4.8×11.6×1.6	1	
H-7	10073368	机头灯部件	Led lamp ASM.	1	
H-8	10069240	电子夹线器	Electromagnet tension disk	1	
H-9	10005204	M4×6螺钉	Screw M4×6	1	
H-10	10000098	SM3/16"×28螺钉	Screw SM3/16"×28	1	
H-11	10073365	电子夹线器电线压板	Fixed plate	1	
H-12	10012080	M4×20螺钉	Screw M4×20	2	
H-13	10006115	5.3×9×1垫圈	Washer 5.3×9×1	2	
H-14	10049837	M5×35螺钉	Screw M5×35	2	
H-15	10070466	电控箱	Control box	1	
H-16	10035172	电线夹1	Cord holder 1	2	
H-17	10071764	电线夹2	Cord holder 2	1	
H-18	10010899	SM3/16"×28螺钉	Screw SM3/16"×28	1	
H-19	10031424	踏板组件	Pedal unit ASM.	1	

** 具体内容需向客服咨询
** Specific content need to consult customer service

润滑分组件 Lubrication Components

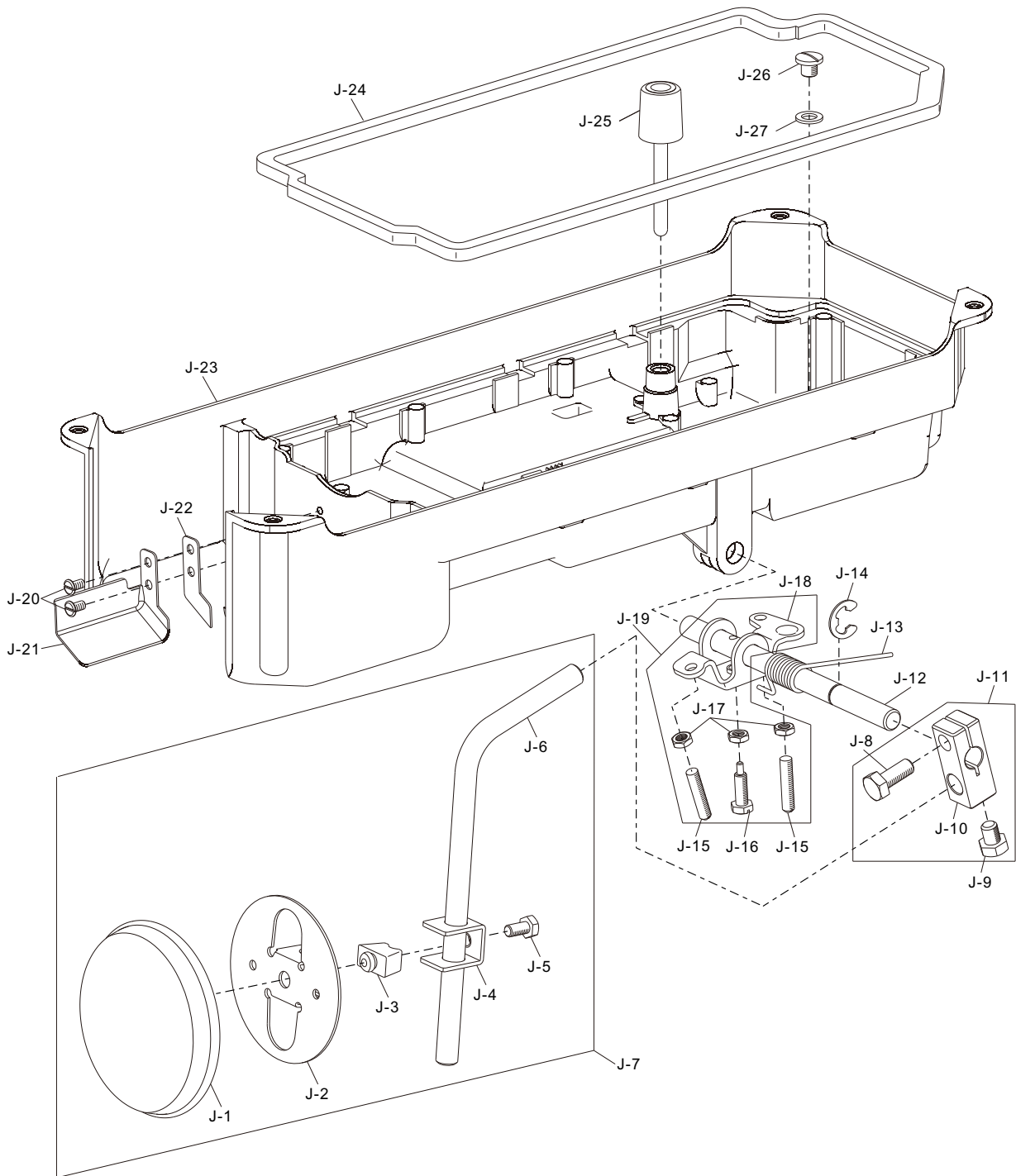


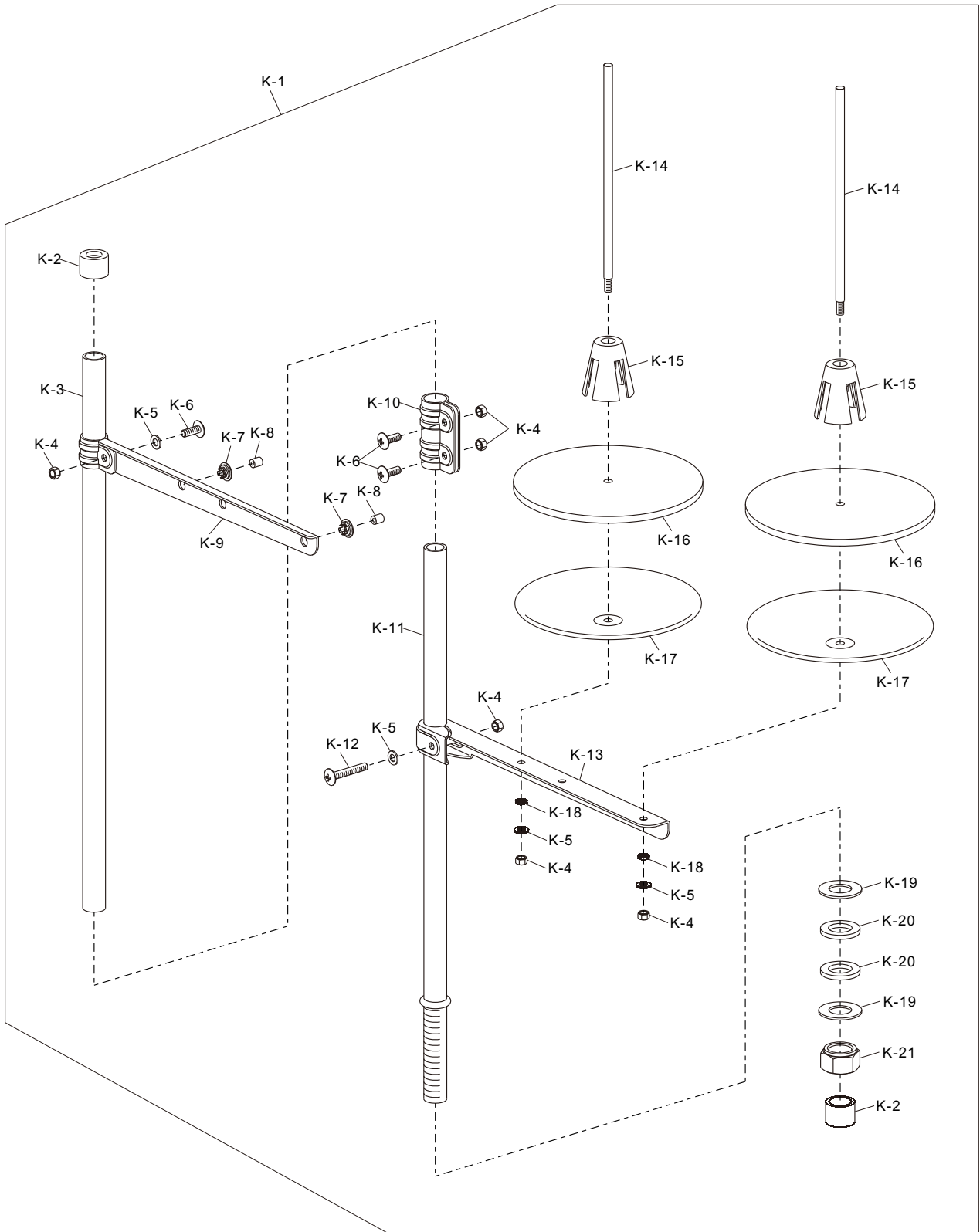
润滑分组件 Lubrication Components

序号 Ref. No.	件号 Part No.	名称	Name of part	数量 QTY	备注 Remark
I-1	10008067	φ2油线(430mm)	Oil wick(430mm)	1	
I-2	10008067	φ2油线(400mm)	Oil wick(400mm)	1	
I-3	10008806	旋梭油量调节簧	Spring	1	
I-4	10071296	旋梭油量调节螺钉	Screw	1	
I-5	10008807	旋梭供油管	Oil tube	1	
I-6	10010074	SM11/64"×40螺钉	Screw SM11/64"×40	1	
I-7	10012445	旋梭供油管压板	Tube holder	1	
I-8	10010292	SM15/64"×28螺钉	Screw SM15/64"×28	1	
I-9	10012443	油管下支承板	Plate	1	
I-10	10010340	供油管接头	Oil connection	1	
I-11	10010293	油泵连接螺柱	Screw	1	
I-12	10008817	油泵部件	Oil pump ASM.	1	
I-13	10003077	6弹簧垫圈	Washer 6	1	
I-14	10050422	SM15/64"×28螺钉	Screw SM15/64"×28	1	
I-15	10005537	5弹簧垫圈	Washer 5	1	
I-16	10010066	SM11/64"×40螺钉	Screw SM11/64"×40	1	
I-17	10048653	上轴供油管	Oil tube	1	
I-18	10008938	油窗	Oil sight window	1	
I-19	10008939	19×3 O形圈	O-ring 19×3	1	
I-20	10063945	挡油海绵	Foam rubber	1	
I-21	10045116	SM9/64"×40螺钉	Screw SM9/64"×40	2	
I-22	20017161	油线固定板组件	Dead plate ASM.	1	
I-23	10007795	φ3.5×φ5油管(690mm)	Oil tube(690mm)	1	
I-24	10050804	回油管夹	Holder	1	
I-25	10008934	SM3/16"×28螺钉	Screw SM3/16"×28	1	
I-26	10042077	回油毛毡夹	Oil felt preser	1	
I-27	10040917	回油毛毡	Roler felt	1	
I-28	20028934	回油管组件	Oil return tube ASM.	1	

** 具体内容需向客服咨询
** Specific content need to consult customer service

油盘、膝抬压脚分组件 Presser Foot Components Of Oil Plate Knee Lift





K

过线架分组件
Components Of Thread-running Stand

序号 Ref. No.	件号 Part No.	名称	Name of part	数量 QTY	备注 Remark
K-1	10007130	二线线架部件	Thread stand ASM.	1	
K-2	10004282	撑管套	Column cap	2	
K-3	10004293	线架上撑管	Column pipe(upper)	1	
K-4	10002953	M5螺母	Nut M5	6	
K-5	10003022	5平底圈	Washer 5	4	
K-6	10003301	M5×14螺钉	Screw M5×14	3	
K-7	10004285	过线管套	Thread guide bushing	2	
K-8	10004289	过线管	Thread guide pipe	2	
K-9	10004298	上过线架	Thread hanger(upper)	1	
K-10	10004286	撑管夹	Column pipe connector	1	
K-11	10004291	线架下撑管	Column pipe(lower)	1	
K-12	10003312	M5×30螺钉	Screw M5×30	1	
K-13	10004284	下过线架	Thread hanger(lower)	1	
K-14	10004288	线轴	Spool pin	2	
K-15	10004287	线盘塑料压块	Spool cushion	2	
K-16	10004281	线盘软垫	Spool mat	2	
K-17	10004299	线盘	Spool seat disc	2	
K-18	10005537	5弹簧垫圈	Washer 5	2	
K-19	10004290	16×30×1.5垫圈	Washer 16×30×1.5	2	
K-20	10004295	16.5×27.5×3垫圈	Washer 16.5×27.5×3	2	
K-21	10002985	M16螺母	Nut M16	1	

“*” 具体内容需向客服咨询
“*” Specific content need to consult customer service



附件
Auxiliaries

