



高速包缝机 ZJ900S系列

HIGH-SPEED OVERLOCK SEWING MACHINE

使用说明书

OPERATION MANUAL

零件手册

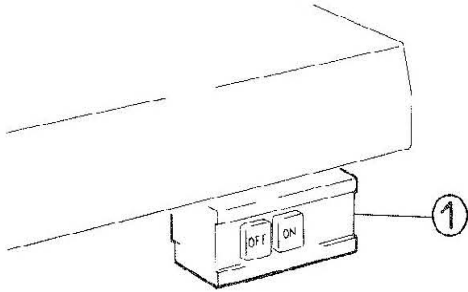
PARTS BOOK

中国·中捷缝纫机股份有限公司
ZOJE SEWING MACHINE CO., LTD.

为了安全

对于缝纫机本身及各种装置,我们充分考虑到它的安全性。请遵照基本的操作方法,安全地进行工作。

- 拆除为保证安全所设置的装置、零件的情况下使用,是非常危险的,请绝对不要拆除有使用。
- 缝纫机在使用时,请不要在缝纫机台板上放置工具及缝纫时不必要的物品。
- 在对缝纫机进行检修、调节、清扫、穿线、换针时,为防止事故发生,务必请切断电源。在确认即使踩缝纫机踏板,缝纫机也不动之后,再进行操作。



注意

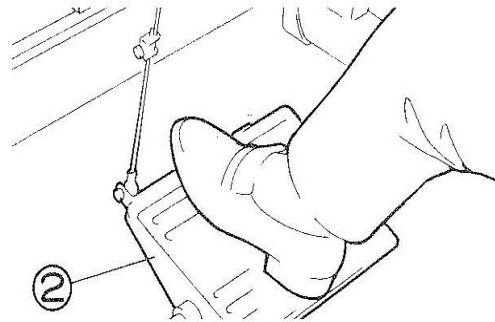
在使用离合式马达的情况下,在关掉电源①后因惯性作用马达仍然会继续旋转。这时如不注意踩动离合器踏板②时,缝纫机会突然动作,这是很危险的。请在关掉电源后,仍继续踩动踏板②,直到缝纫机完全停下来为止。

- 在离开缝纫机台时,务必关掉电源。
- 停电时也请务必关掉电源。
- 检查机器是否安全地接地。

CAUTION

Though we take the utmost care to produce safe sewing machines and devices, operators should follow these basic safety rules.

- To prevent accidents, do not remove safety device or parts while operating the machine.
- Do not leave tools and other unnecessary objects on the machine table while operating the machine.
- Before maintenance, adjusting, cleaning, threading, replacing the needle, and to prevent accidents, be sure the power is turned off. Check that the machine will not operate when the pedal is pressed.



Note

In case the crutch type motor is used, it will keep on rotation by inertia after turning off the power supply. ① if the machine pedal ② is stepped on inadvertently, it is dangerous because the machine will move unexpectedly. Keep on stepping on the pedal ② until the machine comes to stop after turning off power supply.

- Turn the power off before leaving the machine table.
- In the event of a power failure, be sure to turn the machine off.
- Check that the machine is securely grounded.

目录

CONTENTS

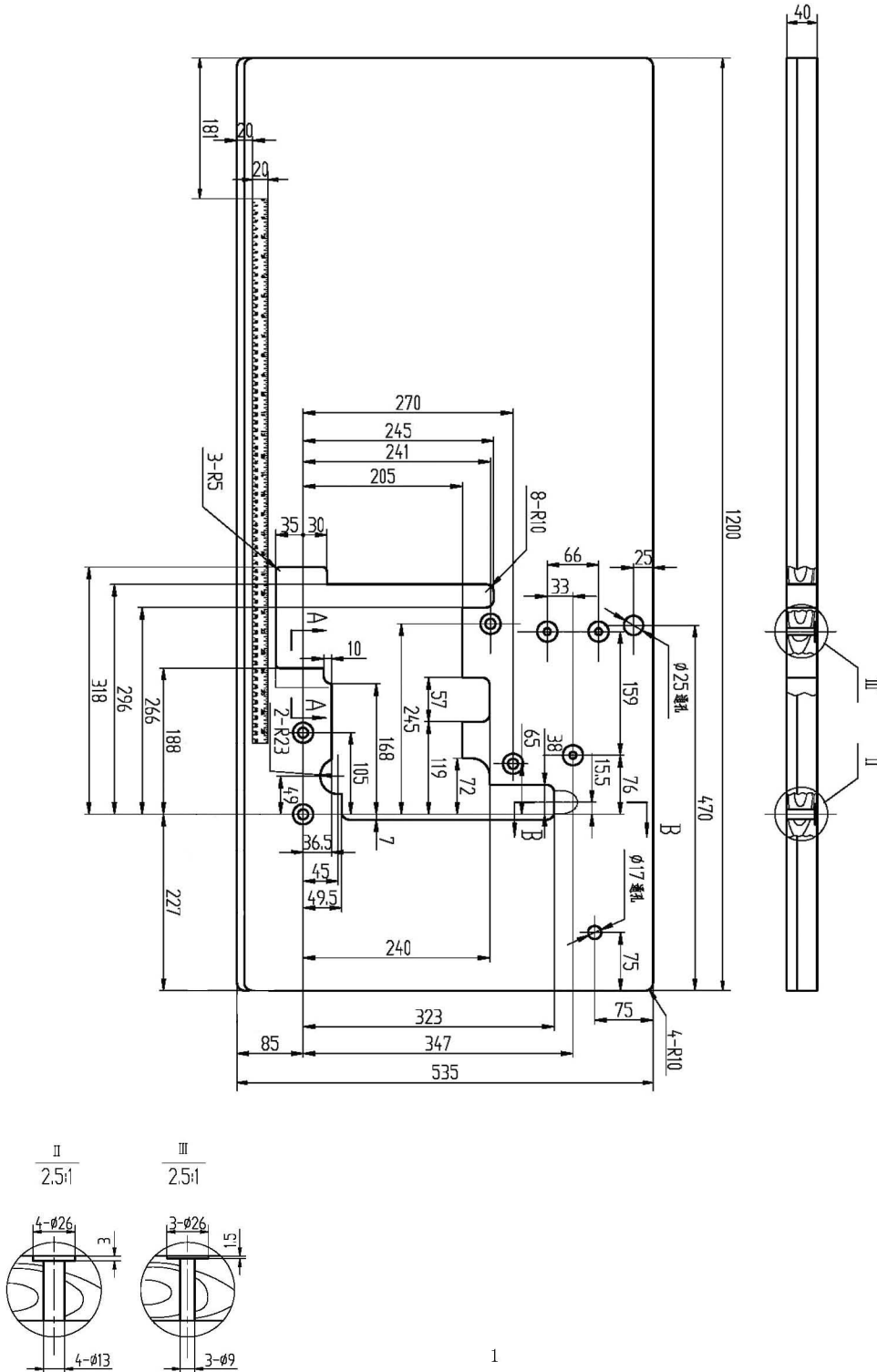
	页码
1. 使用前	page
BEFORE OPERATING	
1.1 台板加工图.....1	1
Schematic diagram of the machine table	
1.2 供油.....2	2
Lubrication	
1.3 手动给油.....3	3
Manual Lubrication	
1.4 给 HR 装置供油.....4	4
Filling the HR device with the silicon oil	
1.5 穿线的方法.....5	5
Threading	
2. 试缝	
TEST SEWING	
2.1 压脚压力的调节.....6	6
Adjusting the press foot pressure	
2.2 差动比的调节.....7	7
Diff. feed ratio adjustment	
2.3 针脚长度的调节.....8	8
Stitch length adjustment	
2.4 线状态的调节.....9	9
Thread tension adjustment	
3. 使用过程中的维护	
MAINTENANCE DURING USE	
3.1 缝纫机的清扫.....10	10
Cleaning the machine	
3.2 换针.....11	11
Replacing the needle	
3.3 检查机油的循环.....12	12
Checking the oil circulation	
3.4 检查并更换机油滤.....13	13
Checking and replacing the oil filter	
3.5 换机油.....14	14
Replacing the oil	
3.6 更换下刀片.....15	15
Replacing the lower knife	

台板加工图

Schematic diagram of the machine table

请参照下图进行台板的加工。

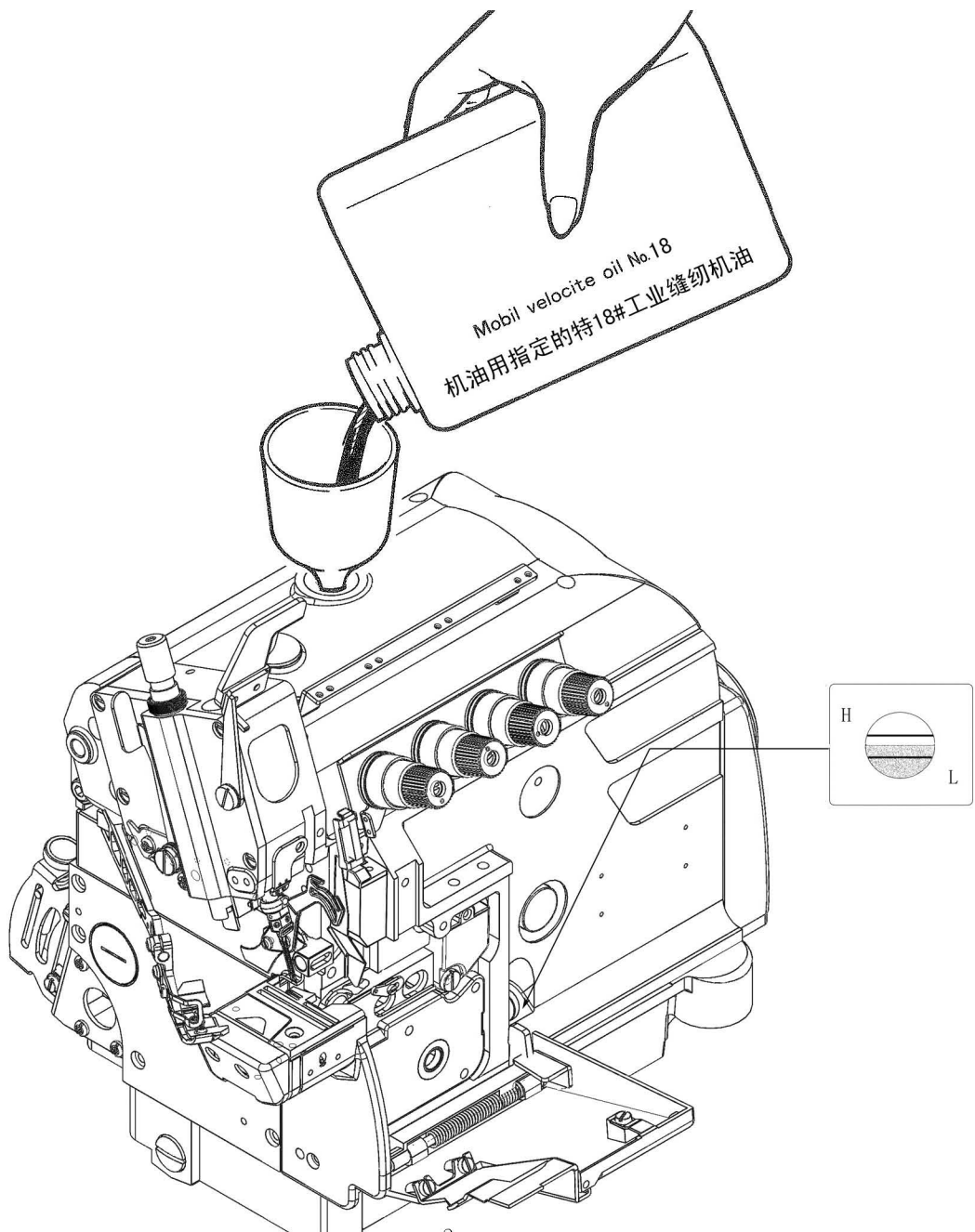
Cut the table referring to the diagram



给油 Lubrication

加油后，液面应在H线和L线之间。
当液面接近或低于L线时，应该加油。

After filling the oil pan, the top of the indicator should be between H and L lines.
Add oil, when the oil level indicator reaches or goes below L lines.

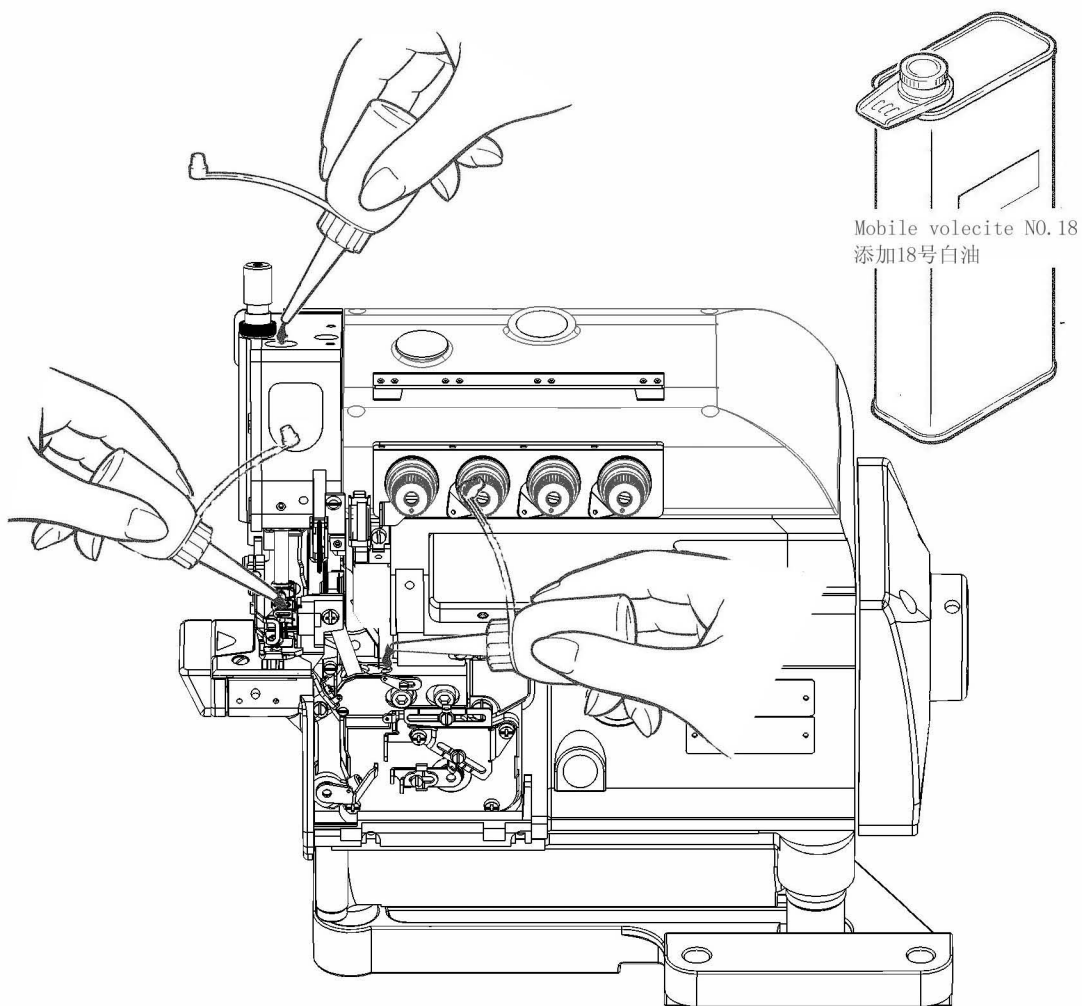


手动供油

Manual Lubrication

当机器第一次运行时或者机器放置一段时间没用时，滴2或3滴机油。

Apply 2 or 3 drops of oil by hand when the machine is used for the first time or has been left unused for some time.

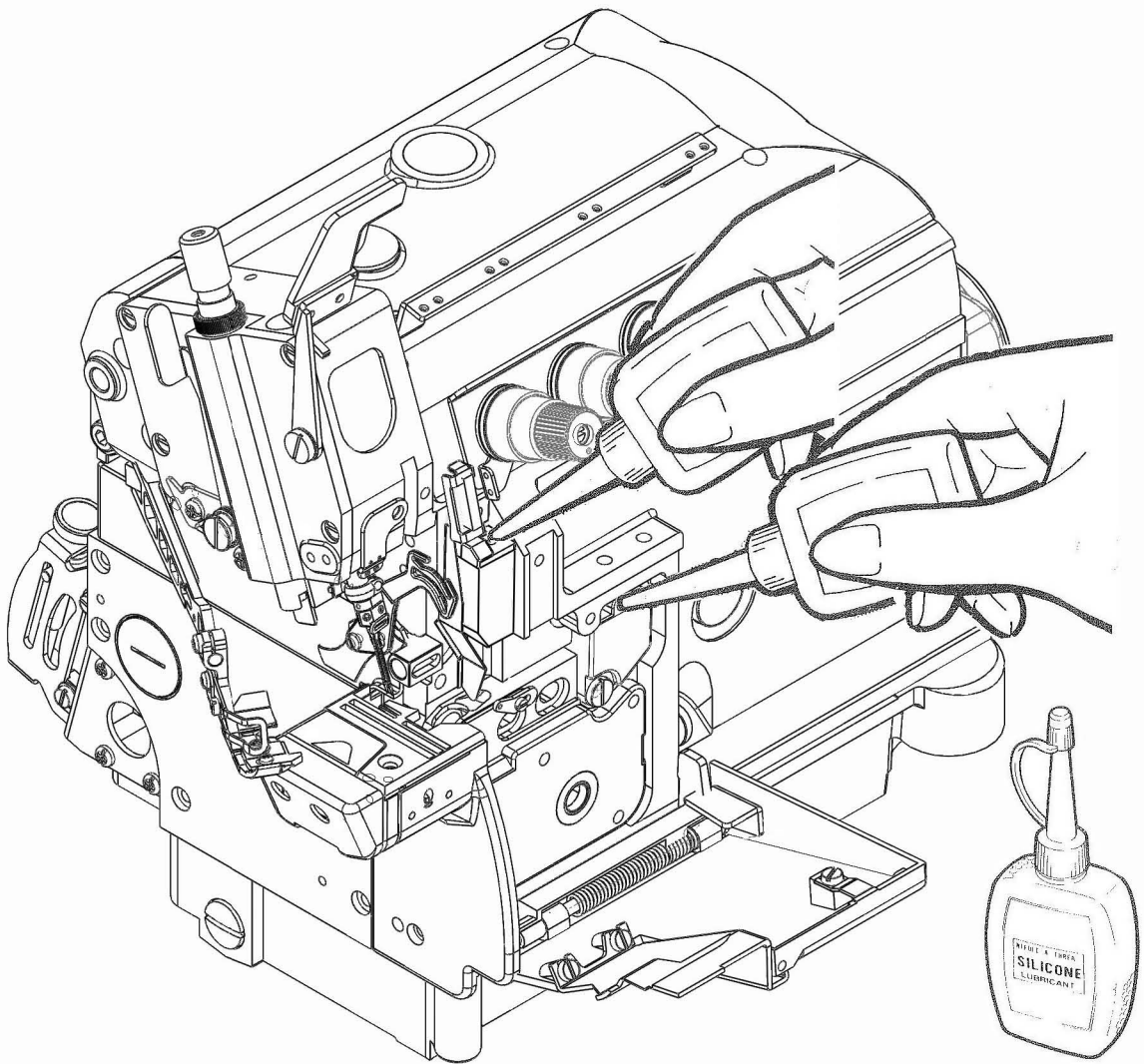


给HR装置供油

Filling the HR device with silicon oil

及时添加硅油，防止机针断线和面料损坏。

Fill the HR device with oil before it is too low in order to prevent needle thread breakage and fabric damage.

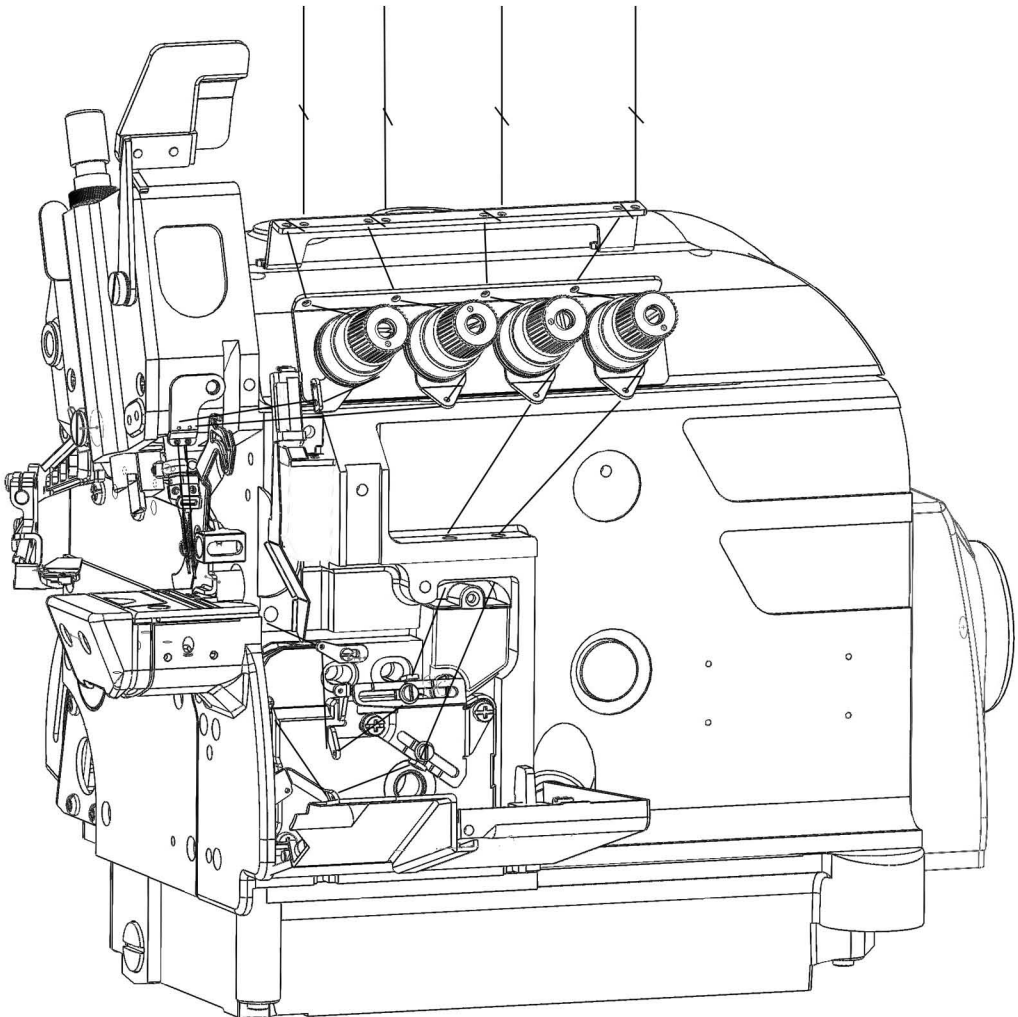


穿线的方法

Threading

打开机盖，摆开压脚。
把机器上的线与要换的线绑结在一起。
拉动线，使线结头穿过针眼孔，弯针线也是如此。用剪刀剪掉结头。
穿线应参照穿线图正确的穿线。

Open covers, swing the presser foot aside.
Knot the preset thread and the thread being used together to thread the machine.
Trim the knots off neatly before passing through the eye of the needle to rethread.
Be sure to thread the machine correctly by referring to the threading diagram.
Trim the knots off neatly after passing through the eye of the looper.

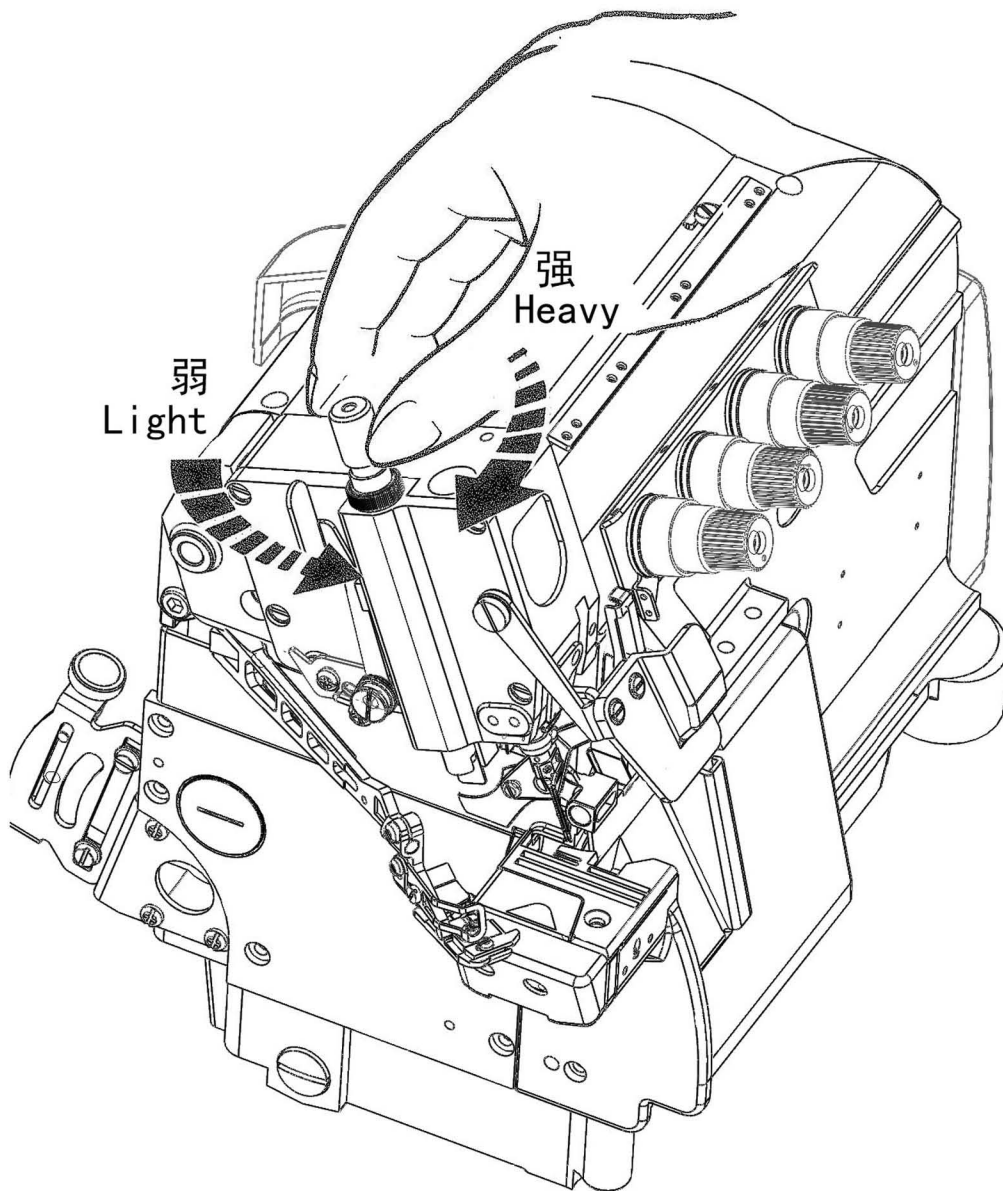


压脚压力的调节

Adjusting the presser foot pressure

压脚压力的调节，松开并调节螺母，在送布达到稳定状态下尽量使用较弱的压力为好。

Loosen adjusting nut and turn adjusting nut to adjust the presser foot pressure. It should be as light as possible, yet be sufficient to obtain the proper stitch formation.

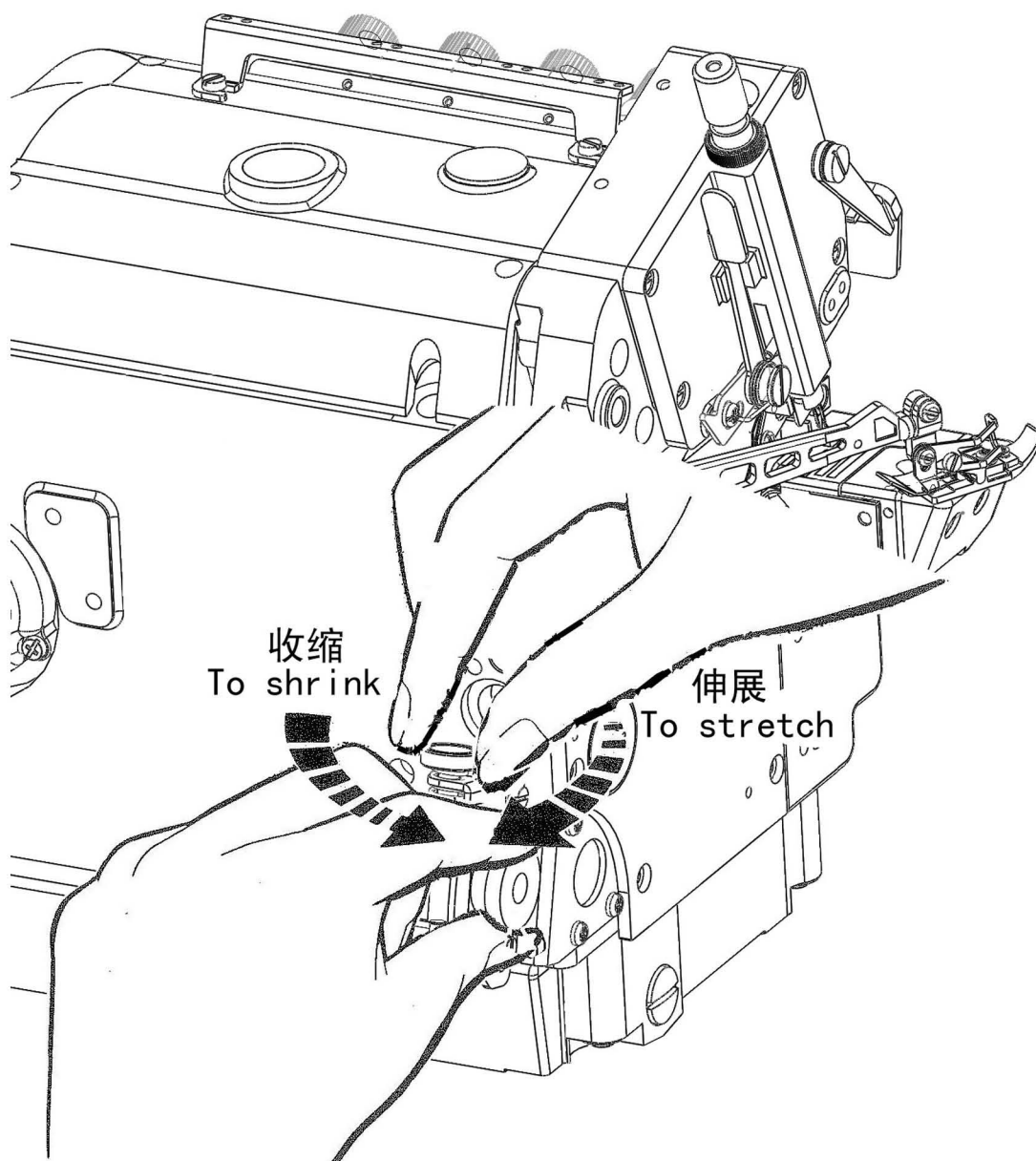


差动比的调节

Diff. feed ratio adjustment

松开并旋转螺母以调整差动比。

Loosen the adjusting nut and turn the adjusting nut to adjust the differential feed ratio.



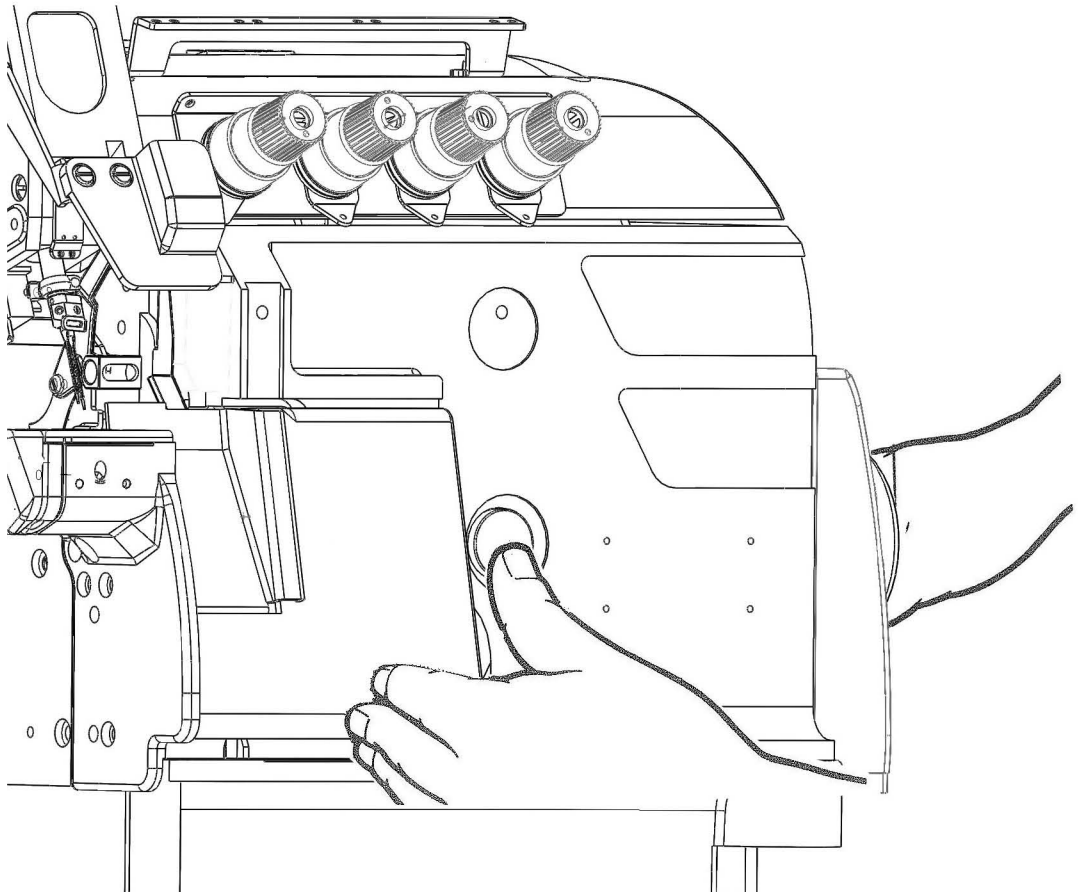
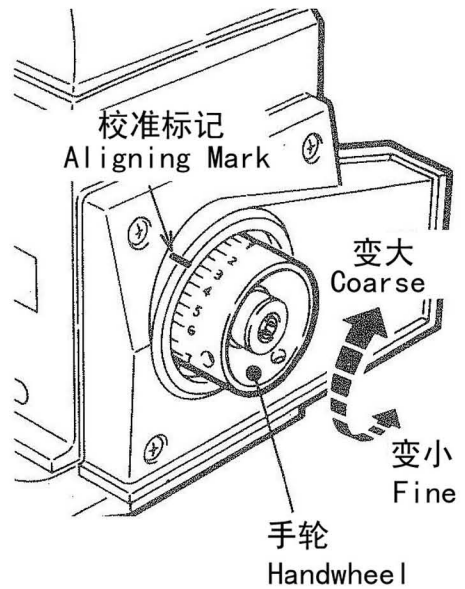
针脚长度的调节

Stitch length adjustment

按住按钮，转动手轮，按钮会陷进更深处。

然后按住按钮的同时，转动手轮，使校准标记对准所希望的数值。

While pressing the push button, turn the handwheel to seek the position at which the push button goes further into the depth. Then, keeping the push button pressed, turn the handwheel and set the desired scale to aligning mark.

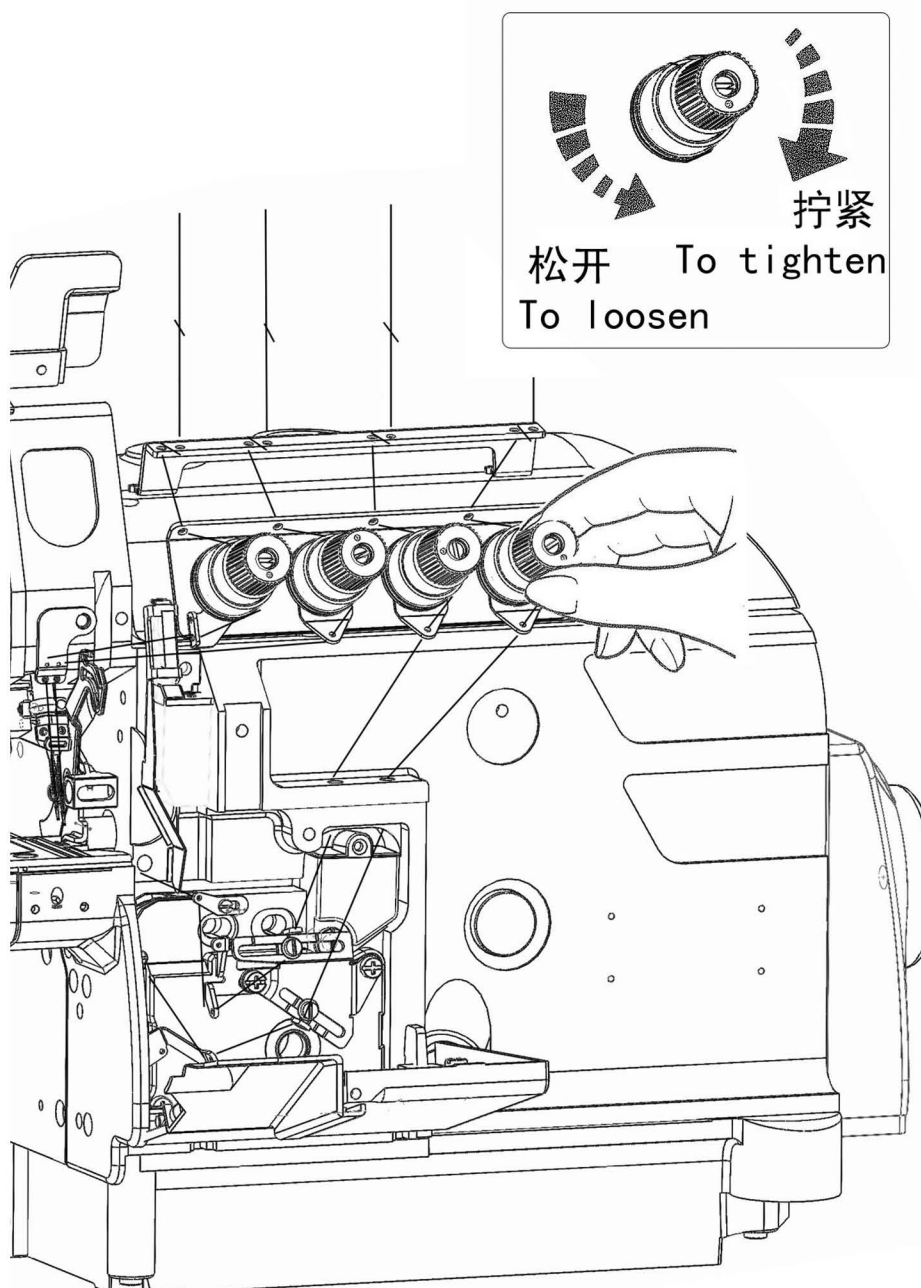


线状态的调节

Adjusting the thread tension

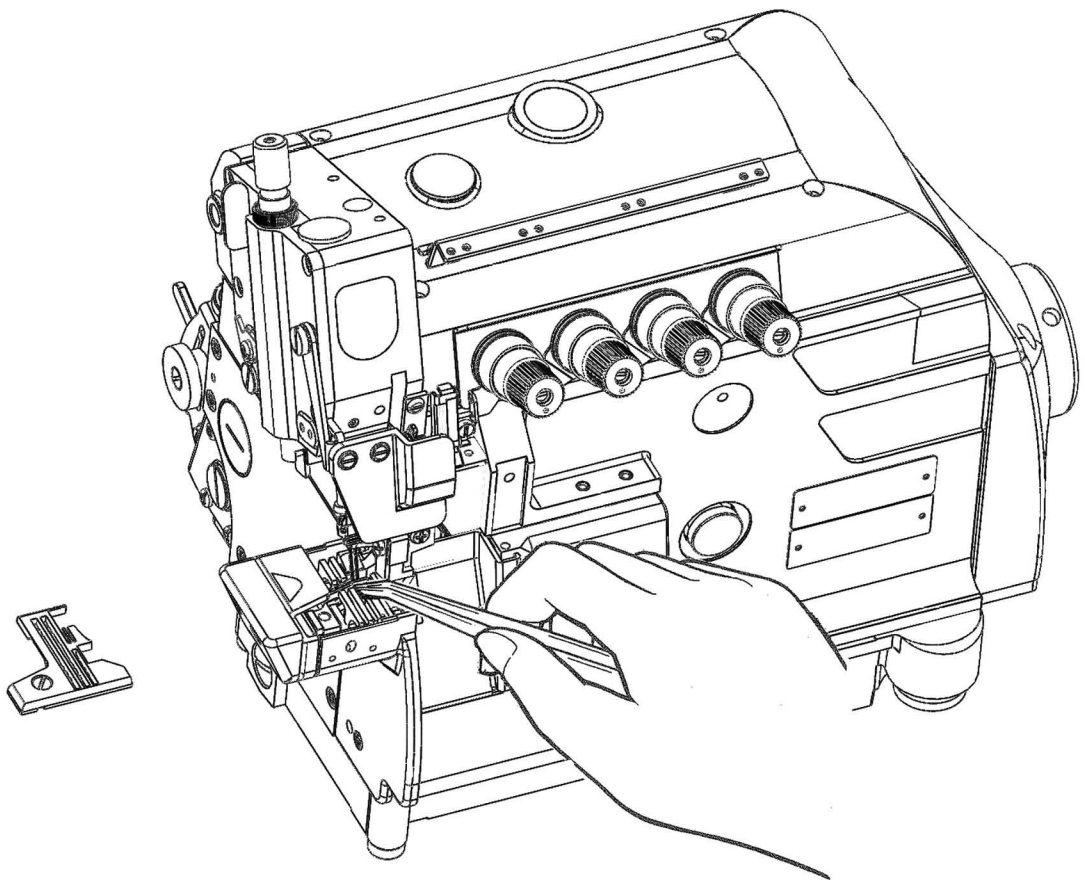
线张力状态的调节，请用针线调节螺帽、上弯针线调节螺帽、弯针线调节螺帽来进行调节。

Make tension adjustments with the needle thread knob, the upper looper knob, and the lower looper knob.



缝纫机的清扫 Cleaning the machine

缝纫机的清扫，以针板槽和送布牙
Mainly the slots of the needle
周围为主。
plate and the feed rows should
be cleaned.

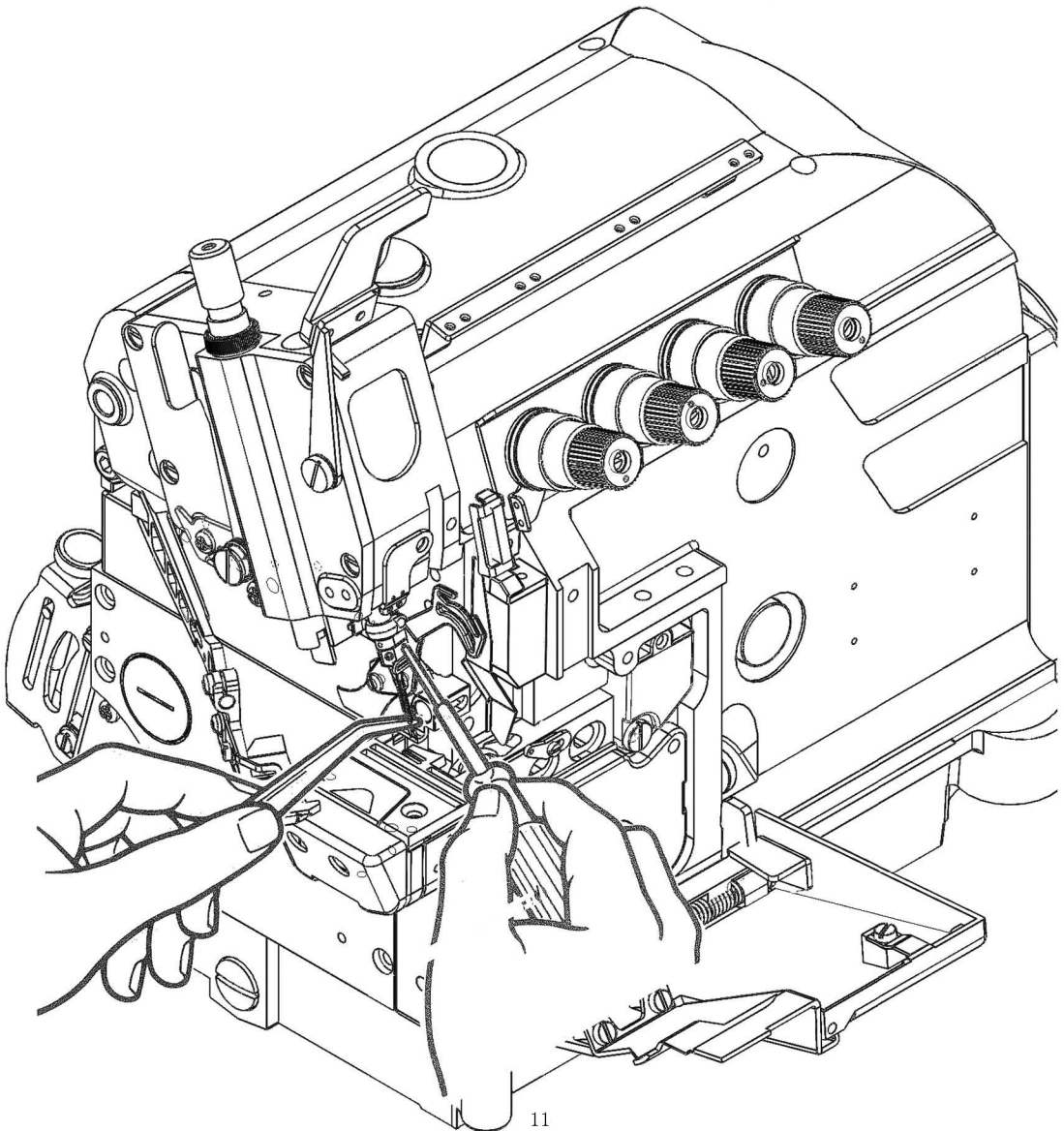
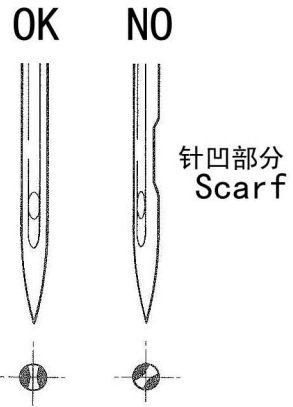


换针

Replacing the needle

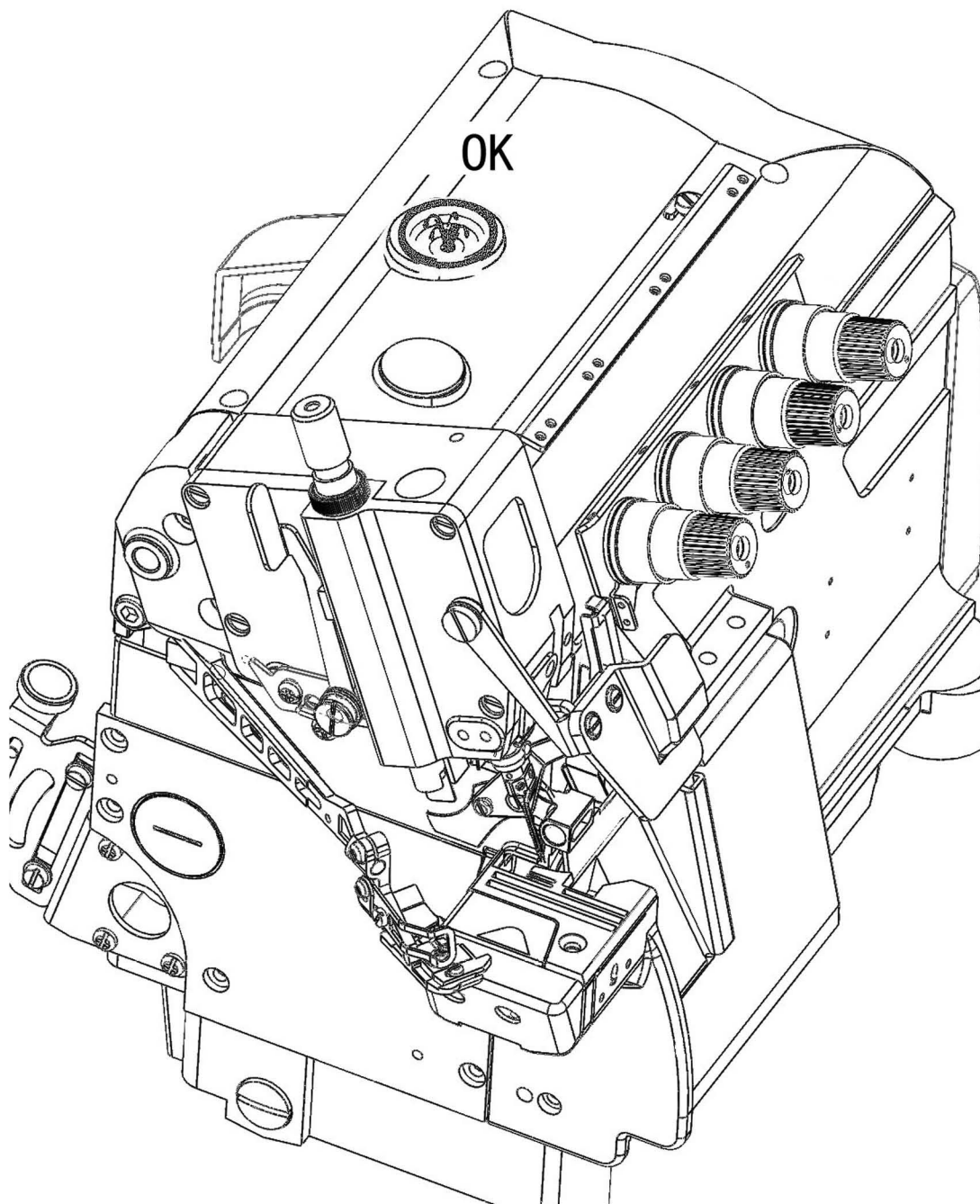
准确辨认针的前后，请将针凹向后方，即背向操作者进行安装。
针要牢固地插到孔的最深处。

Check the needle carefully to see that the scarf is turned to the rear of the machine.
Insert the needle to the proper depth, and fasten securely.



检查机油的循环

Check the oil circulation

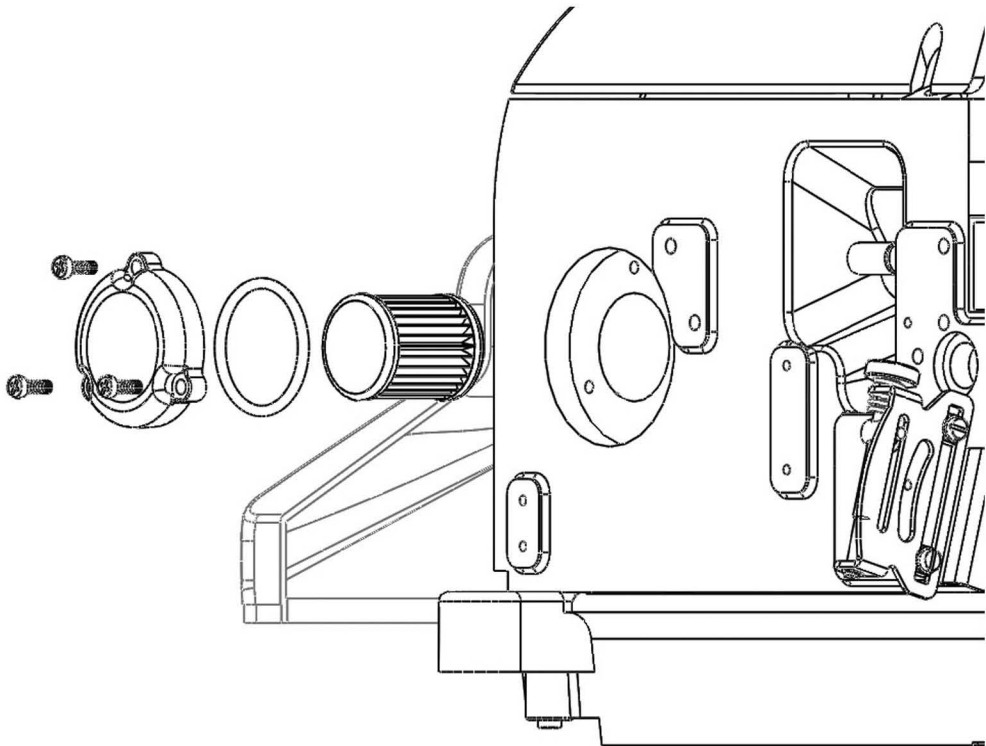


检查并更换滤油器

Checking and replacing the oil filter

滤油器每6个月检查并更换。

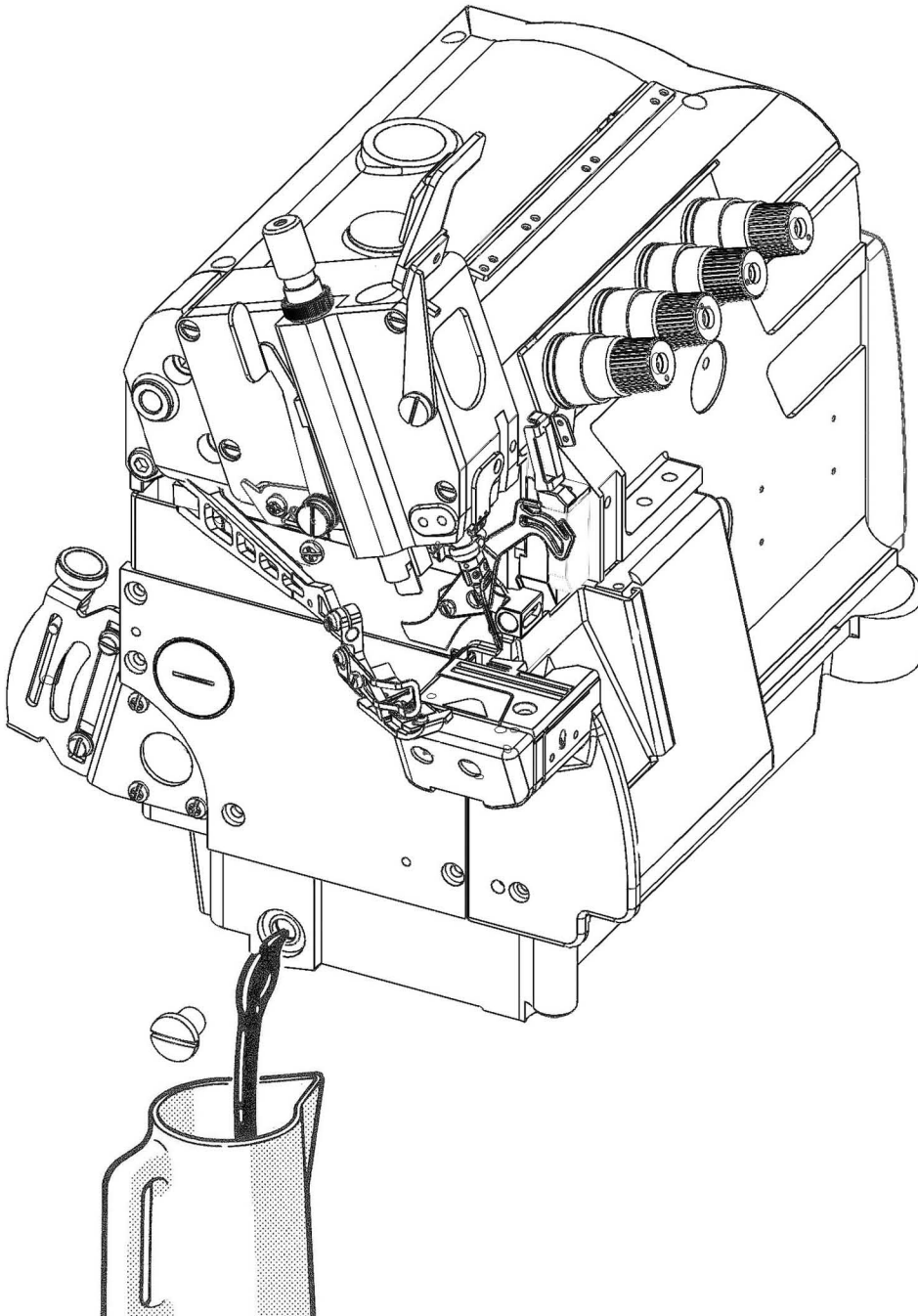
Checking and replacing the oil filter



换机油

Replacing the oil

机油的更换，请在开始使用一个月后更换，然后，每六个月更换一次。 Replace the oil one month after the first use and every six months thereafter.

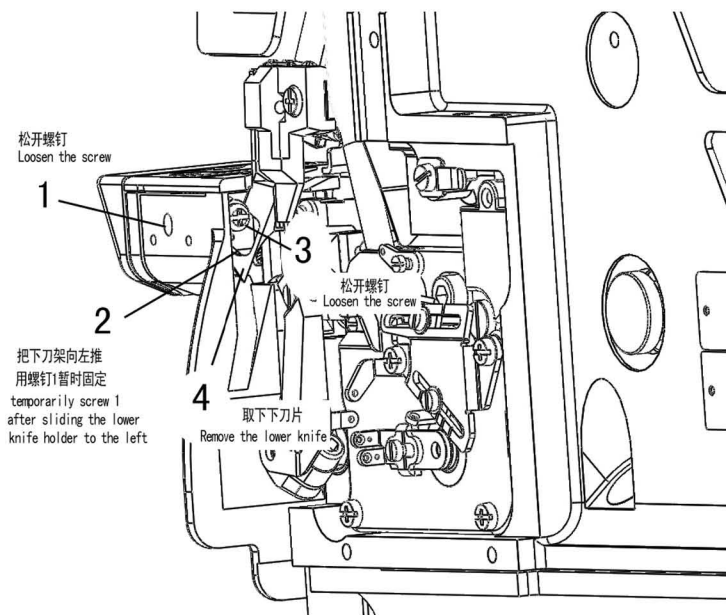


下刀片的更换

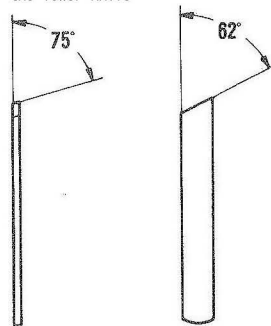
Replacing the lower knife

卸下下刀片

To remove the lower knife

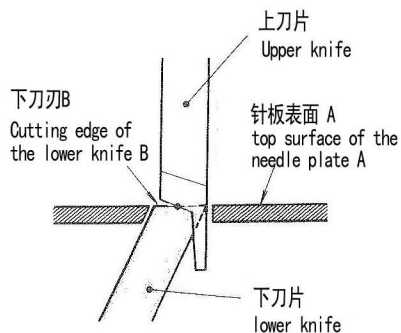
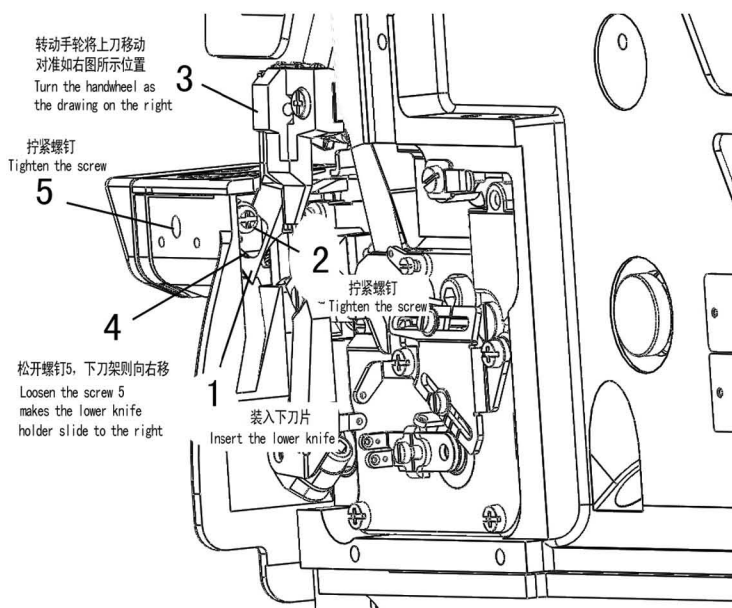


下刀片正确的研磨角度
Correct angles to resharpen
the lower knife



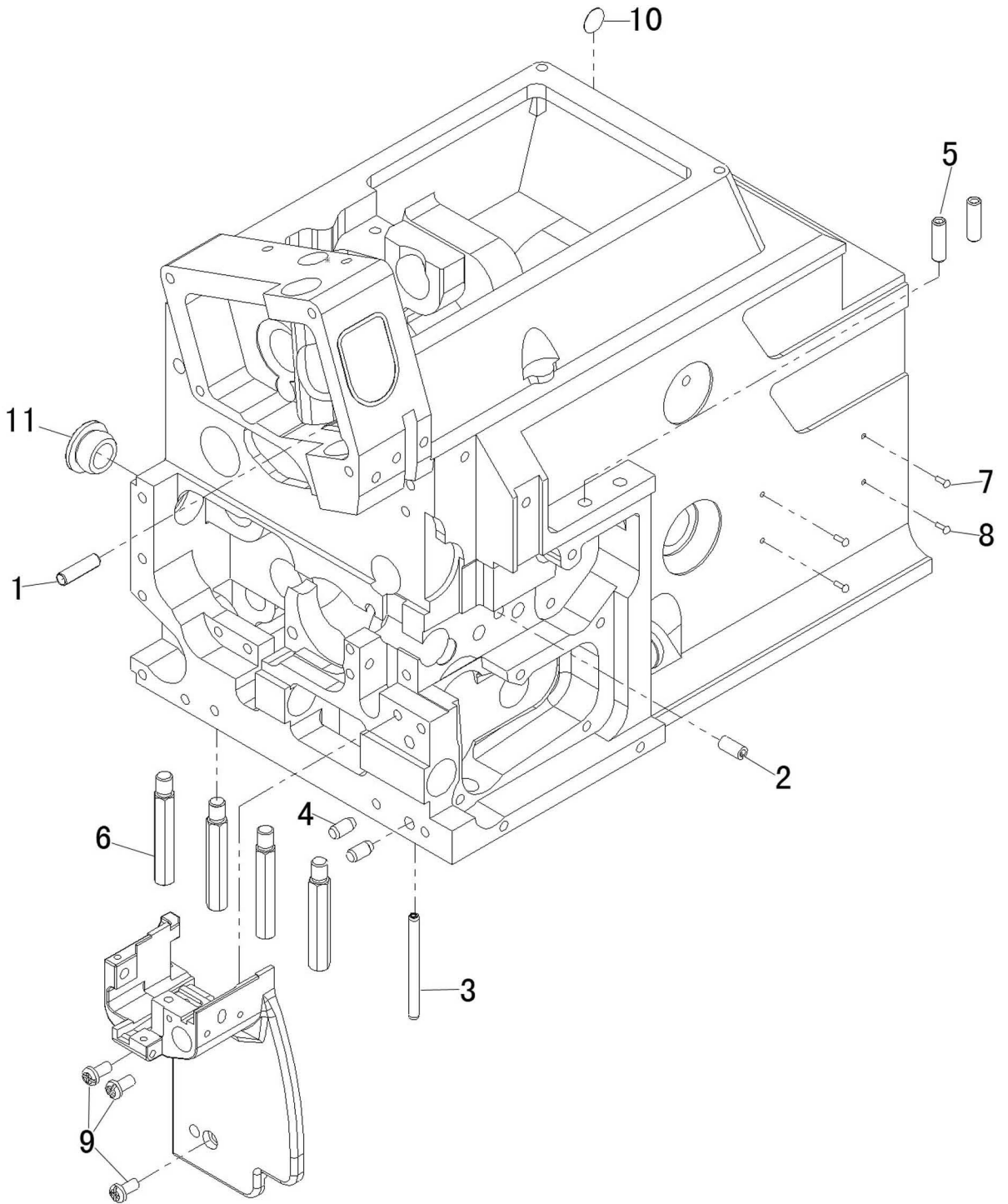
安装下刀片

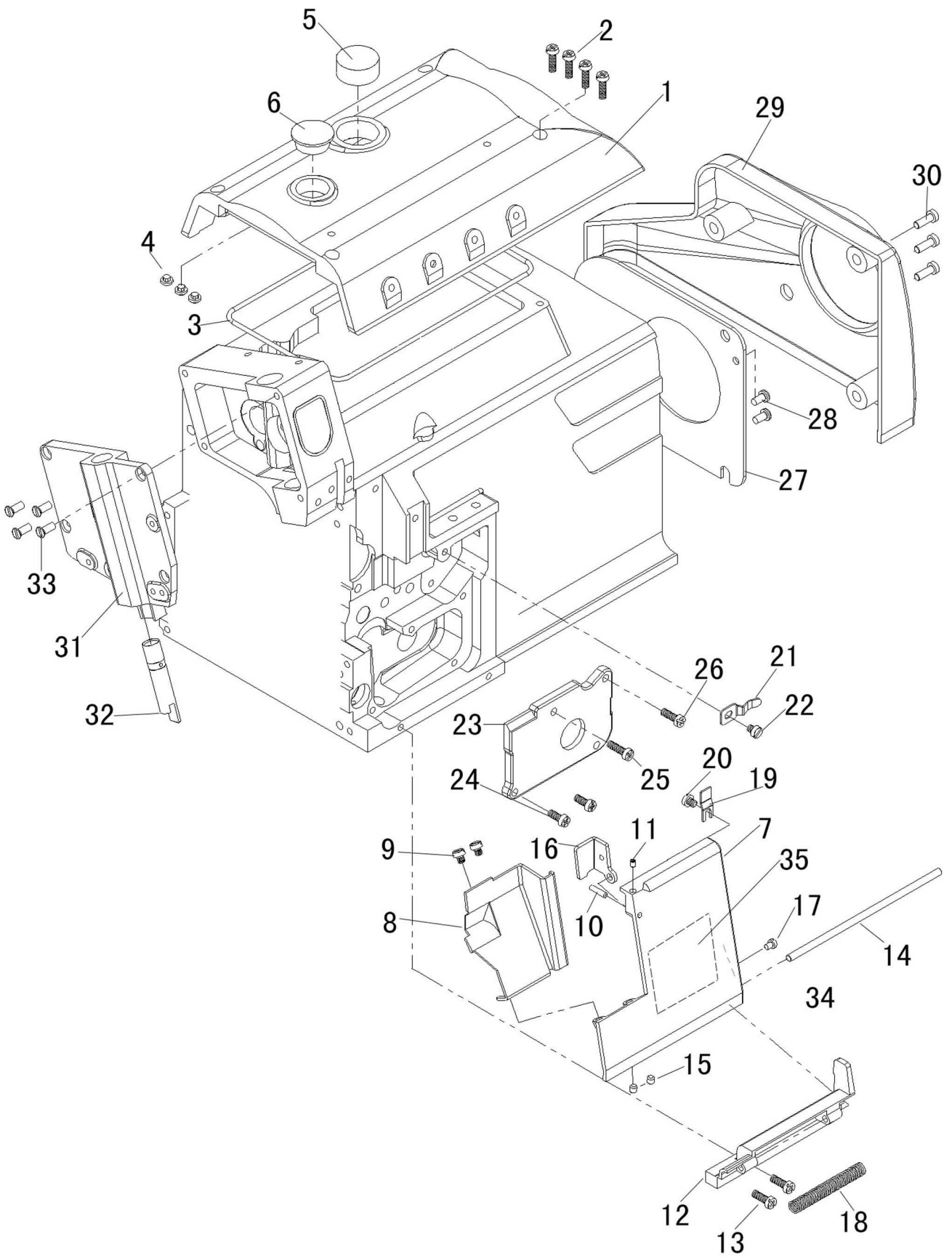
To replace the lower knife



使针板表面A与下刀刃B处于同一水平位置
Level of A = Level of B

安装好下刀片后进行剪线, 确认剪线状况
Check cutting action of knife

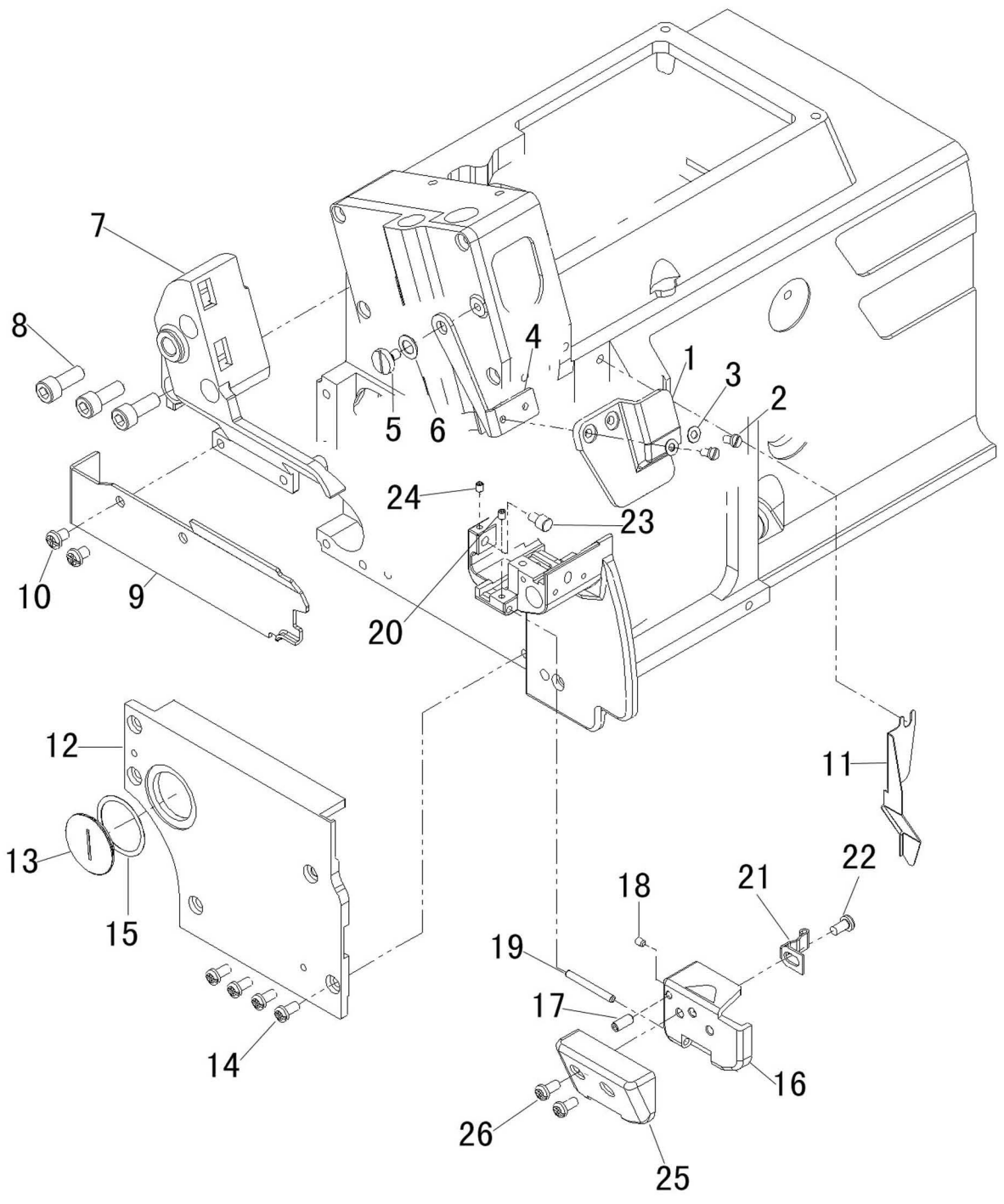




外罩机构 (1)

COVER (1)

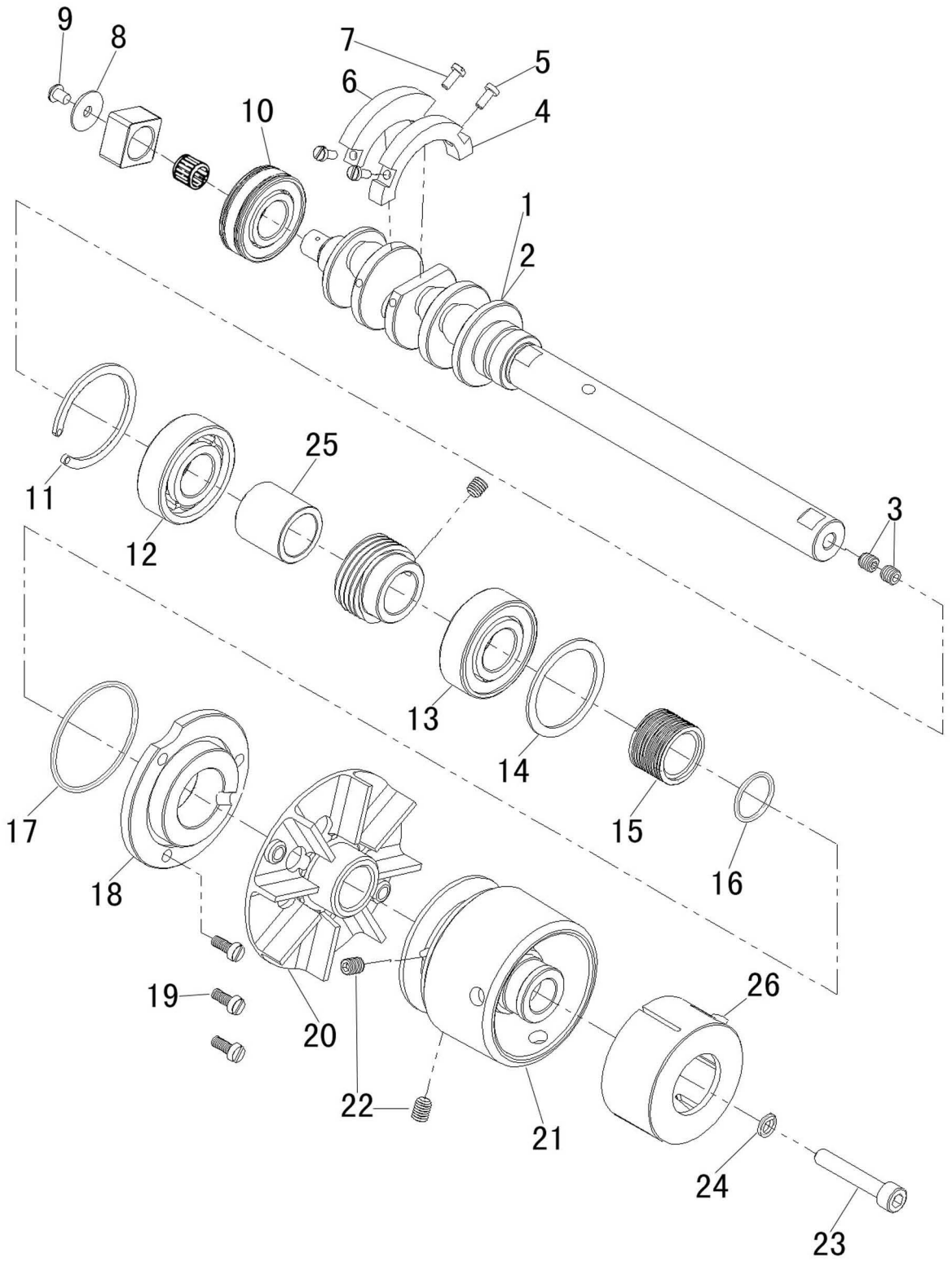
序号 No.	件号 Pars No.	名称	Description	数量 Number
1	10026686	上盖	TOP COVER	1
2	10010697	螺钉M4×14	SCREW	4
3	10026751	上盖密封圈	GASKET	1
4	10009582	防震橡胶垫	RUBBER CUSHION	1
5	10008900	油窗	OIL SIGHT WINDOW	1
6	10008964	注油塞	RUBBER PLUG	1
7	20008183	前盖右	FRONT COVER (RIGHT)	1
8	10026717	前盖中	FRONT COVER (MIDDLE)	1
9	10010554	十字盘头螺钉M4×6	SCREW	2
10	10002863	内六角紧定螺钉M3×12	SCREW	1
11	10013019	内六角紧定螺钉M3×4	SCREW	1
12	10026682	前盖右支架	HINGE	1
13	10009037	螺钉M4×12	SCREW	2
14	10026637	销	PIN	1
15	10009074	内六角紧定螺钉M4×4	SCREW	2
16	10008911	导向板	LATCH	1
17	10009597	螺钉M3×5	SCREW	1
18	10009509	弹簧	SPRING	1
19	10026765	前盖右挡板	LATCH	1
20	10004171	螺钉M4×5	SCREW	1
21	10009035	弹簧板	FLAT SPRING	1
22	10004171	螺钉M4×5	SCREW	1
23	10008917	上弯针架盖	COVER	1
24	10011044	螺钉M4×10	SCREW	2
25	10008965	螺钉M4×14	SCREW	1
26	10008965	螺钉M4×14	SCREW	1
27	10008905	风扇盖	FAN COVER	1
28	10010595	螺钉M4×8	SCREW	2
29	10008968	皮带轮罩	BELT COVER ASSY	1
30	10002935	螺钉M6×14	SCREW	3
31	20008182	侧盖	SIDE COVER ASSY	1
32	10008913	压脚杆	PRESSER BAR	1
33	10009104	螺钉M4×9.5	SCREW	4
34	10008936	机头安全提示牌	CAUTION LABEL	1
35	10026777	穿线图	THREADING DIAGRAM	1



外罩机构(2)

COVER(2)

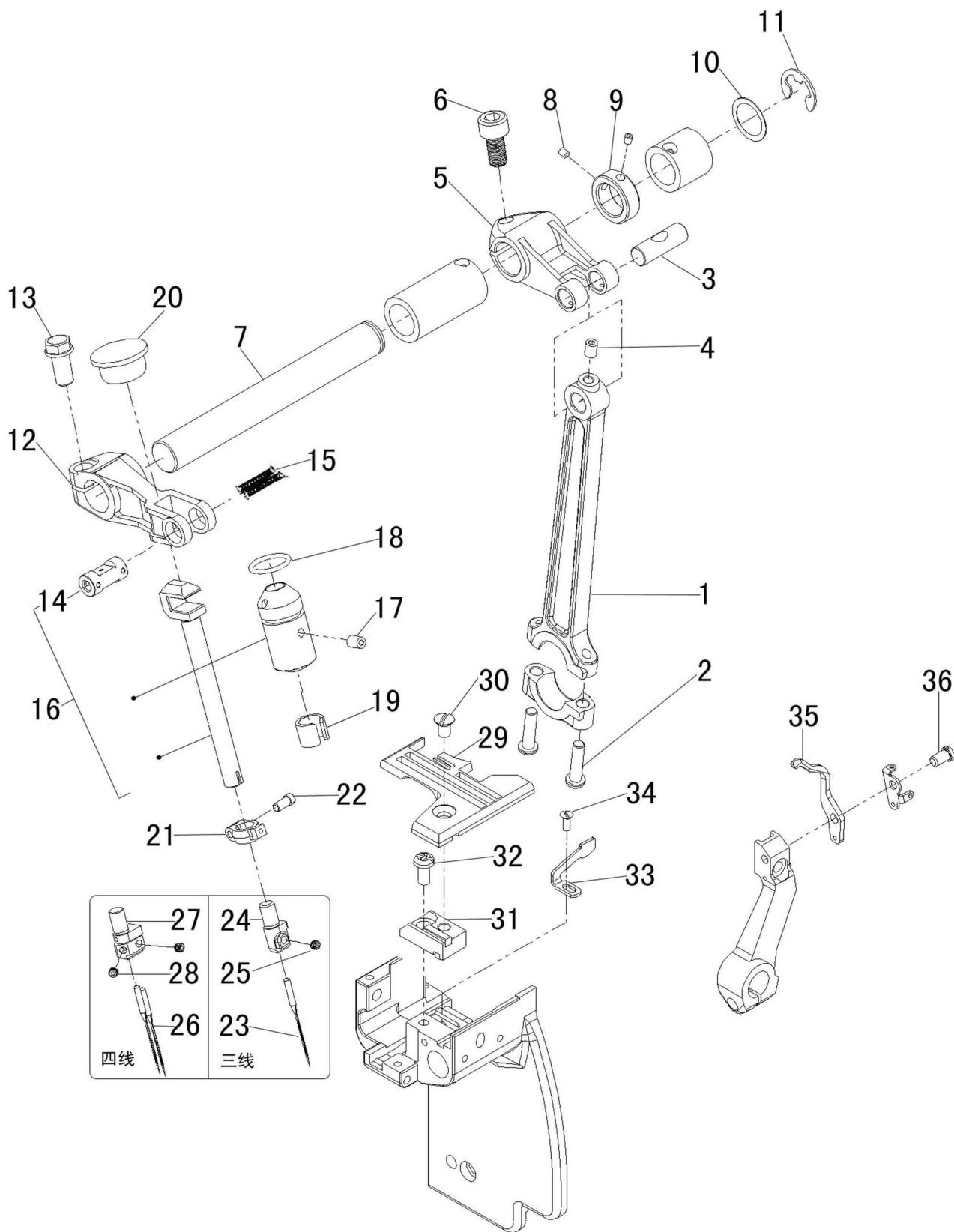
序号 No.	件号 Pars No.	名称	Description	数量 Number
1	10008878	安全罩	EYE GUARD	1
2	10009600	螺钉M3×6	SCREW	2
3	10009599	垫圈	WASHER	2
4	10008879	安全罩架	BRACKET	1
5	10009044	轴位螺钉M4	SCREW	1
6	10010596	垫圈	WASHER	2
7	10026714	支架	BRACKET	1
8	10009171	内六角螺钉M6×25	BOLT	3
9	10026723	内盖板	FABRIC GUIDE	1
10	10002924	螺钉M4.5×6	SCREW	2
11	10026722	挡油板	COVER	1
12	20009242	左端盖组件	COVER ASSY	1
13	20008186	左端盖堵塞	COVER	1
14	10009052	螺钉M4×8	SCREW	4
15	10026755	左端盖堵塞密封圈	GASKET	1
16	10026684	端盖板	SIDE COVER	1
17	10011989	内六角紧定螺钉M3×6	SCREW	1
18	10013019	内六角紧定螺钉M3×3	SCREW	1
19	10026638	端盖销	PIN	1
20	10013019	内六角紧定螺钉M3×3	SCREW	1
21	10026727	卡簧	FLAT SPRING	1
22	10005299	螺钉M4×4	SCREW	1
23	10026708	销	PIN	1
24	10013019	内六角紧定螺钉M3×3	SCREW	1
25	10026725	端盖装饰板	COVER	1
26	10003006	螺钉M4×5	SCREW	2



主轴机构

CRANKSHAFT DRIVE MECHANISM

序号 No.	件号 Pars No.	名称	Description	数量 Number
1	10026675	主轴	CRANKSHAFT	1
2	10026675	主轴	CRANKSHAFT	1
3	10010907	内六角螺钉M6×6	SCREW	2
4	10009402	平衡块	BALANCE WEIGHT	1
5	10003001	螺钉M3×8	SCREW	2
6	10026660	平衡块1	BALANCE WEIGHT	1
7	10003001	螺钉M3×8	SCREW	2
8	10026719	垫圈	WASHER	1
9	10010594	螺钉M4×5.5	SCREW	1
10	10025895	轴承	BALL BEARING	1
11	10008898	主轴卡圈	RING	1
12	10009780	轴承	BALL BEARING	1
13	10003543	轴承	BALL BEARING	1
14	10009361	右盖垫片	WASHER	1
15	10009424	螺纹套	OIL SEAL	1
16	10009360	O型圈	O RING	1
17	10009359	O型圈	O RING	1
18	10009358	右盖	RIGHT COVER	1
19	10009104	螺钉M4×9.5	SCREW	3
20	10009478	风扇	FAN ASSY	1
21	20003522	手轮	MACHINE PULLEY	1
22	10009187	内六角螺钉M6×8	SCREW	2
23	10014387	内六角螺钉M6×35	BOLT	1
24	10003249	垫圈	WASHER	1
25	10026770	蜗杆套	SPACER	1
26	10014397	手轮盖	COVER	1



针杆机构

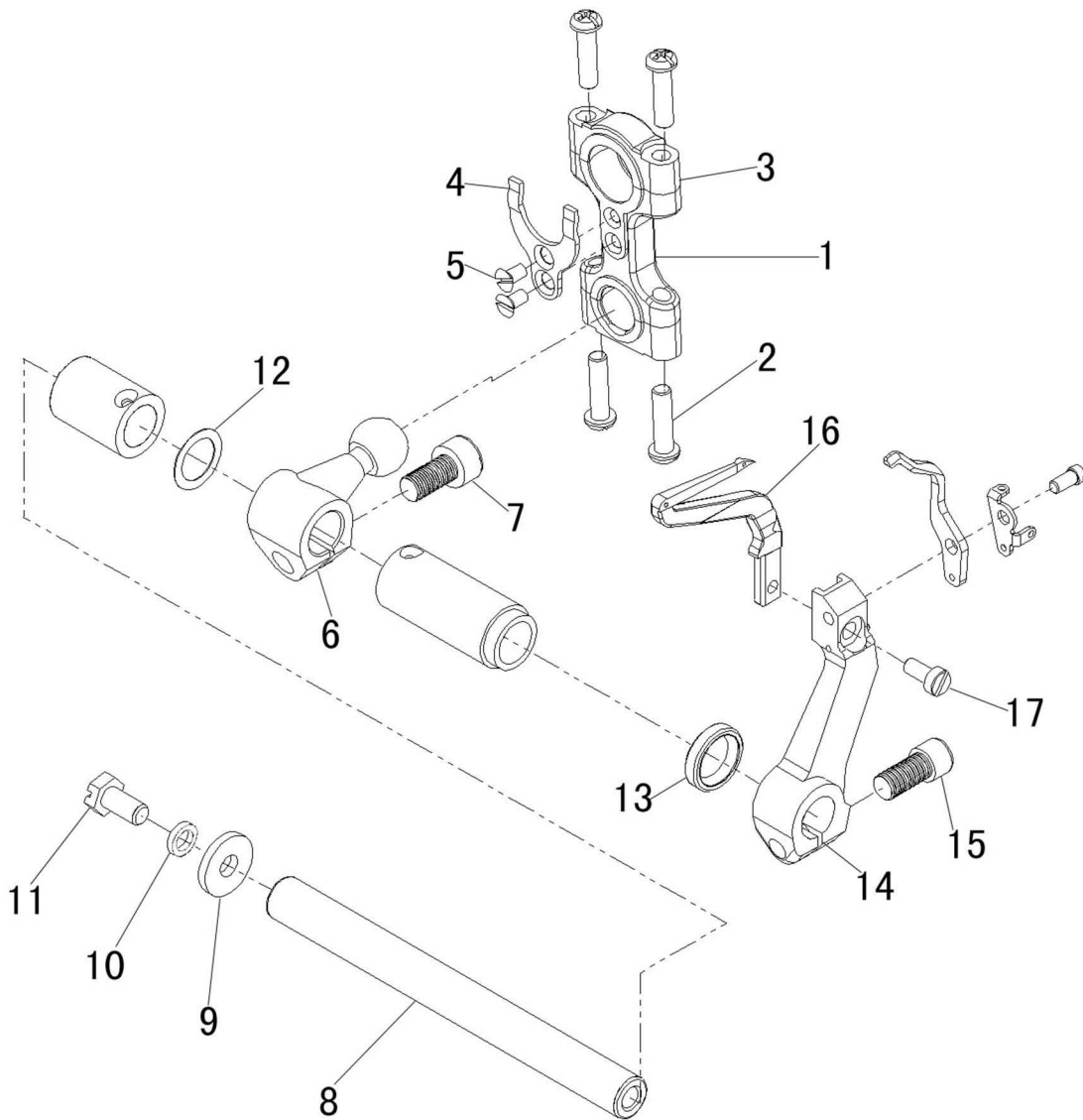
NEEDLE DRIVE MECHANISM

序号 No.	件号 Pars No.	名称	Description	数量 Number
1	10002961	直针传动连杆	CONNECTION	1
2	10002939	螺钉M4×15.5	SCREW	2
3	10009432	直针连杆销	PIN	1
4	10009109	螺钉M4×6	SCREW	1
5	10009433	直针传动曲柄	CRANK	1
6	10009164	螺钉M6×12	BOLT	1
7	10026733	直针传动轴	SHAFT	1
8	10026771	挡圈	COLLAR	1
9	10010196	螺钉M3×3	SCREW	2
10	10009477	垫圈	WASHER	1
11	10003273	挡圈	RING	1
12	10009374	直针曲柄	LEVER	1
13	10009245	螺钉M6×12	BOLT	1
14	10009345	直针曲柄销	SHAFT ASSY	1
15	10008090	油线	OIL WICK	2
16	10009355	针杆组件	BUSHING ASSY	1
17	10009109	螺钉	SCREW	1
18	10009391	O型圈	O RING	1
19	10009356	针杆套毛毡	FELT	1
20	10009576	橡胶塞	PLUG	1
21	10009344	针夹头夹	RING	1
22	10009382	螺钉M3×6	SCREW	1
23	10004899	机针	NEEDLE	1
24	10003434	针夹头	NEEDLE HOLDER	1
25	10009255	螺钉	SCREW	1
26	10004899	机针	NEEDLE	2
27	10009340	针夹头	NEEDLE HOLDER	1
28	10009255	螺钉	SCREW	1
29	10026687	针板	NEEDLE PLATE	1
30	10009290	螺钉M4×7.5	SCREW	1
31	10026656	针板座	BRACKET ASSY	1
32	10009052	螺钉M4×8	SCREW	1
33	10026673	直针前护针	NEEDLE GUARD (FRONT)	1
34	10002915	螺钉M2.5×4	SCREW	1
35	10026665	直针后护针	NEEDLE GUARD (REAR)	1
36	10009600	螺钉M3×6	SCREW	1

上弯针机构

UPPER LOOPER DRIVE MECHANISM

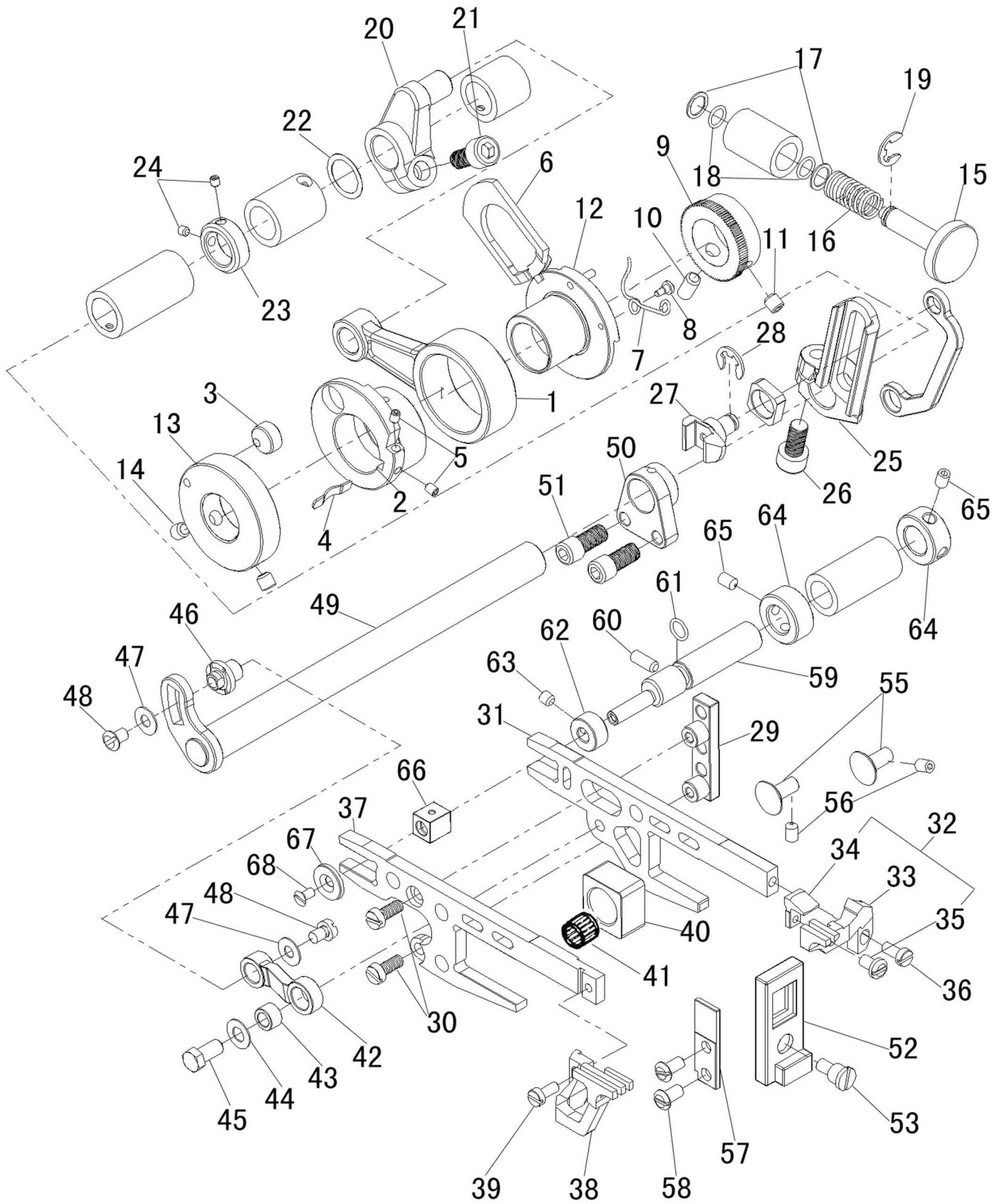
序号 No.	件号 Pars No.	名称	Description	数量 Number
1	10003064	弯针传动连杆	CONNECTION	1
2	10002939	螺钉M4×16	SCREW	2
3	10002939	螺钉M4×16	SCREW	2
4	10009431	连杆挡板	GUIDE	1
5	10009626	螺钉M3×6	SCREW	2
6	10003062	上弯针球曲柄	CRANK	1
7	10003062	上弯针球曲柄	CRANK	1
8	10009164	螺钉M6×12	BOLT	1
9	10026734	上弯针轴	SHAFT	1
10	10009399	密封圈	OIL SEAL	1
11	10009232	垫圈	WASHER	1
12	10026704	定位圈	COLLAR	1
13	10005692	内六角螺钉M4×9	BOLT	1
14	10008643	垫圈	WASHER	1
15	10026752	上弯针滑杆组件	UPPER LOOPER HOLDER ASSY	1
16	10009373	上弯针摇杆	LEVER	1
17	10009245	螺钉M6×12	BOLT	1
18	10009406	销	PIN ASSY	1
19	10008067	油线	OIL WICK	1
20	10009240	螺钉M3×4	SCREW	1
21	10026754	滑杆	UPPER LOOPER HOLDER ASSY	1
22	10009405	毛毡	FELT	1
23	10011724	螺钉M3.5×6	SCREW	1
24	10009376	滑杆孔毛毡	FELT	1
25	10026664	上弯针	UPPER LOOPER	1
26	10026753	滑杆座	UPPER LOOPER HOLDER BASE	1
27	10026753	滑杆座	UPPER LOOPER HOLDER BASE	1
28	10009008	螺钉M6×16	BOLT	1
29	10009397	毛毡	FILTER	1
30	10026721	盖板	COVER	1
31	10009353	螺钉M2.5×8	SCREW	1
32	10009379	螺钉M2.5×6	SCREW	1
33	10009375	吸油毡	FELT	1
34	10009350	滑杆座毛毡压板	BRACKET ASSY	1
35	10009597	螺钉M3×4	SCREW	1
36	10010008	注油标贴	LABEL	1



下弯针机构

LOWER LOOPER DRIVE MECHANISM

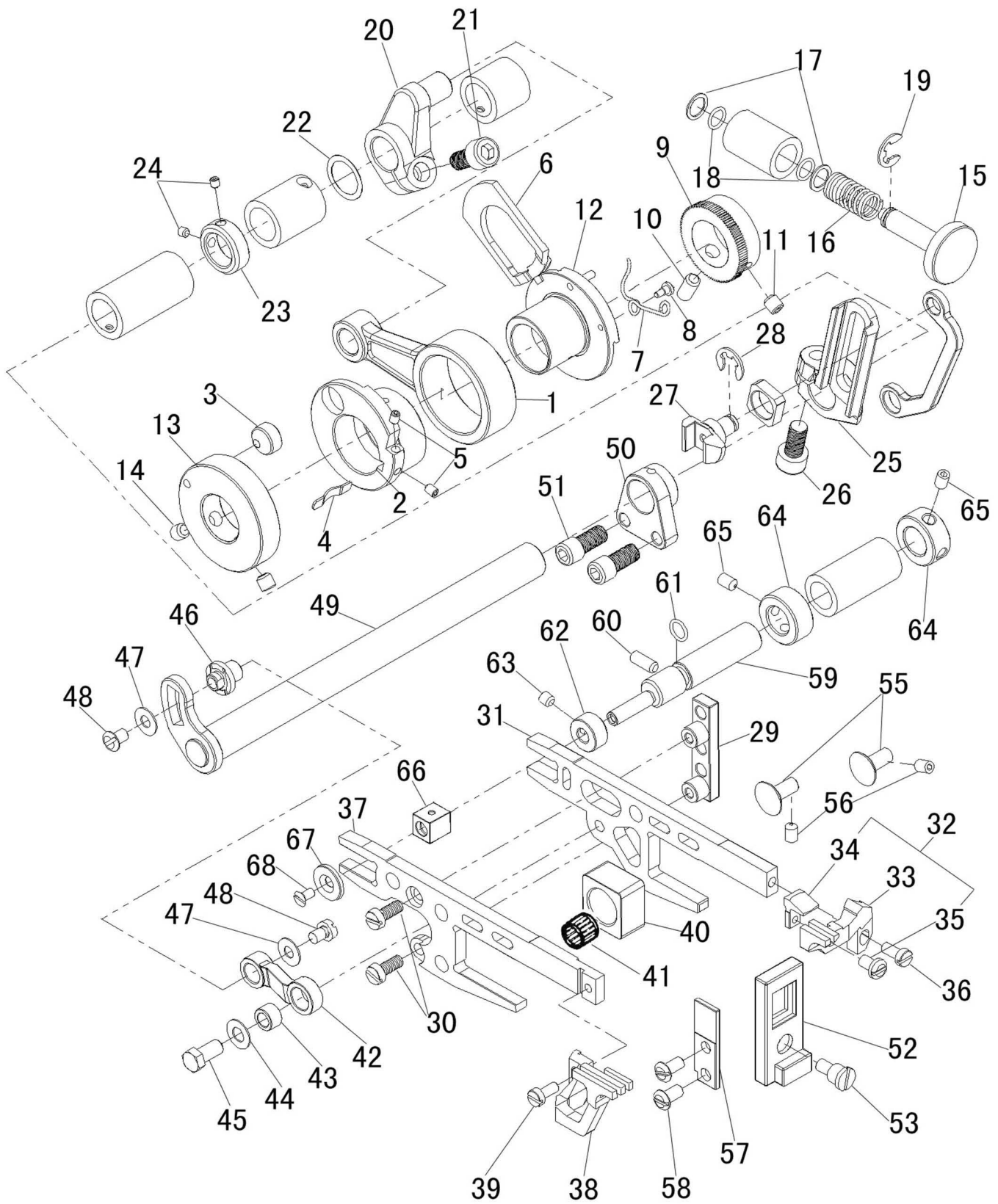
序号 No.	件号 Pars No.	名称	Description	数量 Number
1	10003064	弯针传动连杆	CONNECTION	1
2	10002939	螺钉M4×16	SCREW	2
3	10002939	螺钉M4×16	SCREW	2
4	10009431	连杆挡板	GUIDE	1
5	10009626	螺钉M3×6	SCREW	2
6	10026776	下弯针球曲柄	CRANK	1
7	10009164	螺钉M6×12	BOLT	1
8	10026735	下弯针轴	SHAFT	1
9	10009367	垫圈	WASHER	1
10	10005537	垫圈	WASHER	1
11	10009349	螺钉M4×10	BOLT	1
12	10009232	垫圈	WASHER	1
13	10008988	密封圈	OIL SEAL	1
14	10026706	下弯针架	LOWER LOOPER HOLDER ASSY	1
15	10014210	螺钉M5×12	BOLT	1
16	10026663	下弯针	LOWER LOOPER	1
17	10012509	十字螺钉M3.5×8	SCREW	1



送布机构

FEED MECHANISM

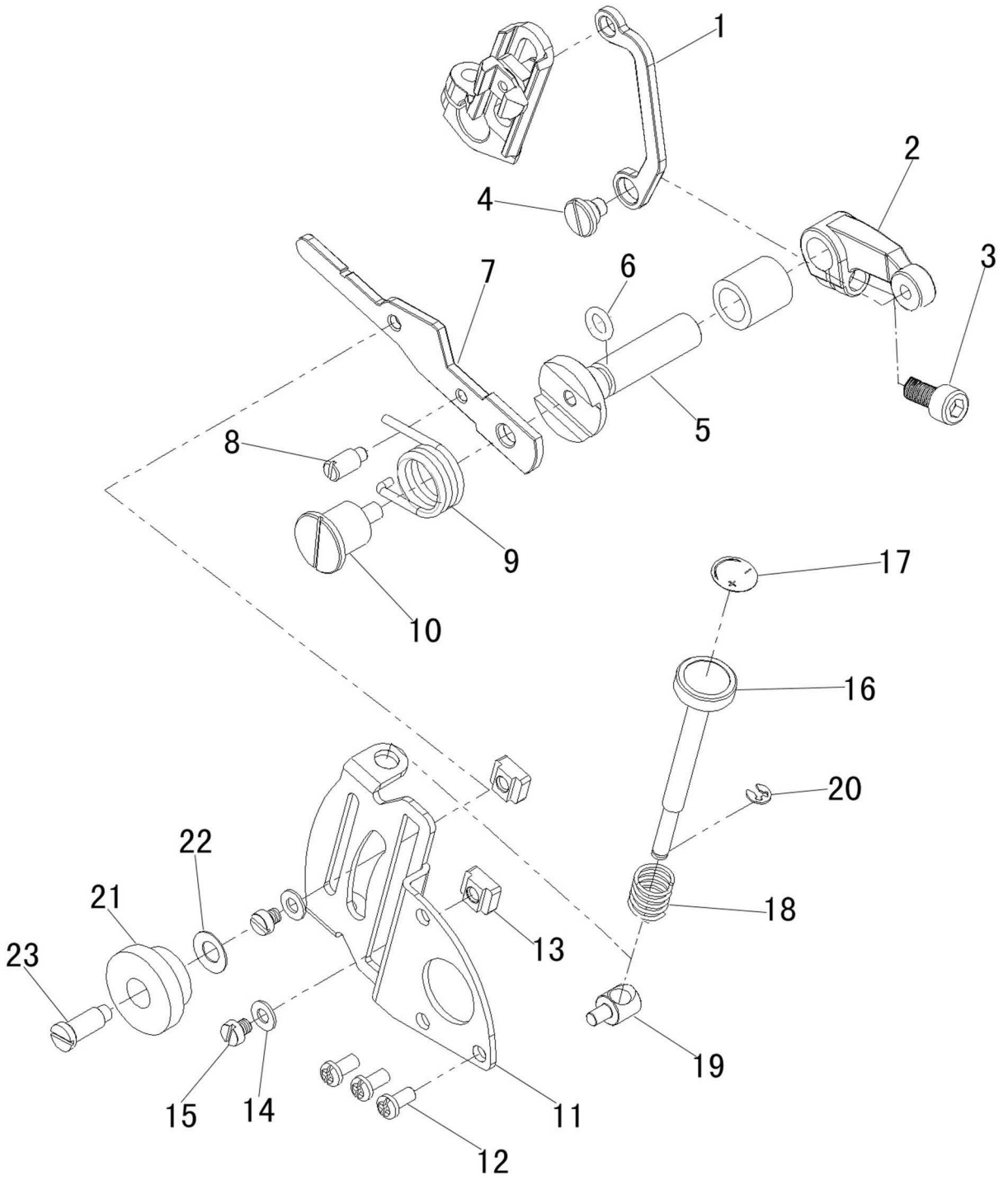
序号 No.	件号 Pars No.	名称	Description	数量 Number
1	10026737	滚针轴承连杆	CONNECTION	1
2	10026738	送布偏心轮	ECCENTRIC	1
3	10003218	送布偏心导轮	GUIDE/FEED ECCENTRIC	1
4	10026743	弹簧片	FLAT SPRING	1
5	10013019	螺钉M3×4	SCREW	2
6	10026739	内齿锁紧块	RATCHET	1
7	10026740	弹簧	SPRING	1
8	10002890	螺钉	SCREW	1
9	10026741	外齿锁紧圈	RATCHET	1
10	10012162	螺钉M5×5	SCREW	1
11	10009167	螺钉M5×10	SCREW	1
12	10026742	针距调节凸轮	ECCENTRIC	1
13	10026744	针距调节偏心轮片	REGULATOR	1
14	10012162	螺钉M5×5	SCREW	2
15	10026634	针距调节按钮轴	PUSH BOTTON	1
16	10026712	弹簧	SPRING	1
17	10026766	垫圈	WASHER	2
18	10009261	O型圈	O RING	2
19	10009654	轴用开口挡圈	RING	1
20	10026633	送布曲柄	CRANK	1
21	10009164	螺钉M6×12	BOLT	1
22	10009477	垫圈	WASHER	1
23	10026771	挡圈	COLLAR	1
24	10010196	螺钉M3×3	SCREW	2
25	10026702	差动曲柄	CRANK ASSY	1
26	10009164	螺钉M6×12	SCREW	1
27	10026703	差动曲柄拨杆	SLIDER	1
28	10026728	轴用开口挡圈	RING	1
29	10026701	差动调节杆	GUIDE	1
30	10009104	螺钉M4×10	SCREW	2
31	10026658	送料牙架	MAIN FEED BAR	1
32	10026666	送料牙组件	MAIN FEED DOG ASSY	1
33	10026667	主送料牙	MAIN FEED DOG	1
34	10026668	辅助送料牙	AUXILIARY FEED DOG	1
35	10010555	螺钉C1×6	SCREW	1
36	10009586	螺钉M3.5×8	SCREW	1
37	10026659	差动牙架	DIFFERENTIAL FEED BAR	1
38	10026669	差动送料牙	DIFFERENTIAL FEED DOG	1
39	10009586	螺钉M3.5×8	SCREW	1
40	10026651	拾牙滑块	BLOCK	1
41	10026639	拾牙滚针轴承	NEEDLE BEARING	1
42	10026640	送料连杆	LINK	1
43	10026772	送料连杆销套	BUSHING	1
44	10026729	垫圈	WASHER	1
45	10026677	螺钉M5×10	BOLT	1
46	10026700	送料连杆销	PIN	1
47	10026730	垫圈	WASHER	2
48	10010554	螺钉M4×5.5	SCREW	2



送布机构

FEED MECHANISM

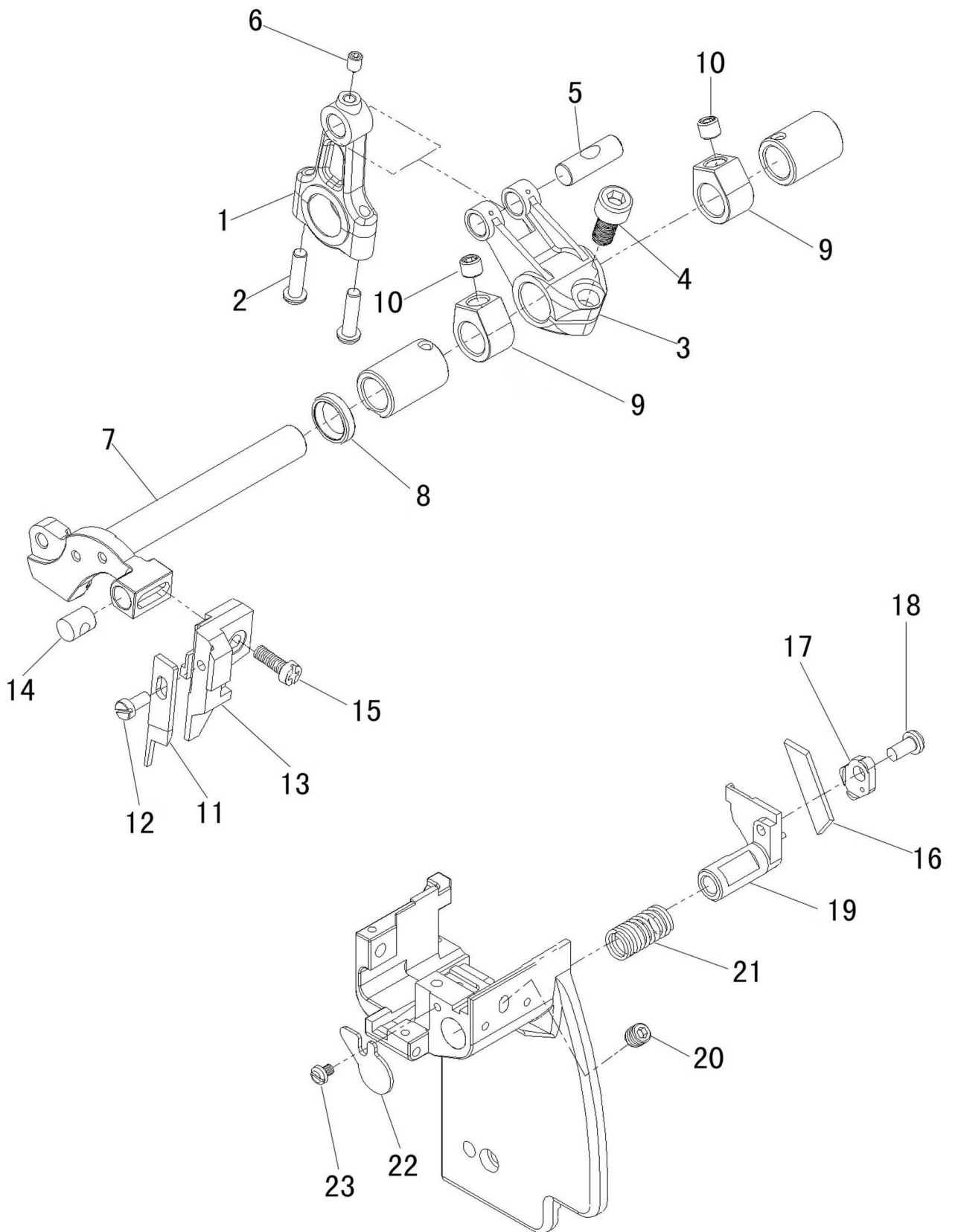
序号 No.	件号 Pars No.	名称	Description	数量 Number
49	10026653	送布轴	SHAFT	1
50	10026775	送布轴座	BLOCK	1
51	10003102	螺钉M4×12	BOLT	2
52	10026676	油封架	GUIDE	1
53	10026680	轴位螺钉M4	SCREW	1
54	10026655	牙架油封	OIL SEAL	2
55	10026678	导向轴	GUIDE	2
56	10009109	螺钉M4×6	SCREW	2
57	10026718	挡片	GUIDE	1
58	10002881	螺钉M4×8	SCREW	2
59	10026707	抬牙调节偏心轴	ECCENTRIC PIN	1
60	10003149	内六角紧定螺钉M4×10	SCREW	1
61	10003826	O型圈	O RING	1
62	10009166	挡圈	COLLAR	1
63	10009074	螺钉M4×4	SCREW	1
64	10026773	挡圈	COLLAR	2
65	10009109	螺钉M4×6	SCREW	2
66	10009134	抬牙调节滑块	BLOCK	1
67	10026731	垫圈	WASHER	1
68	10009626	螺钉M3×6	SCREW	1



送布机构 (2)

FEED MECHANISM (2)

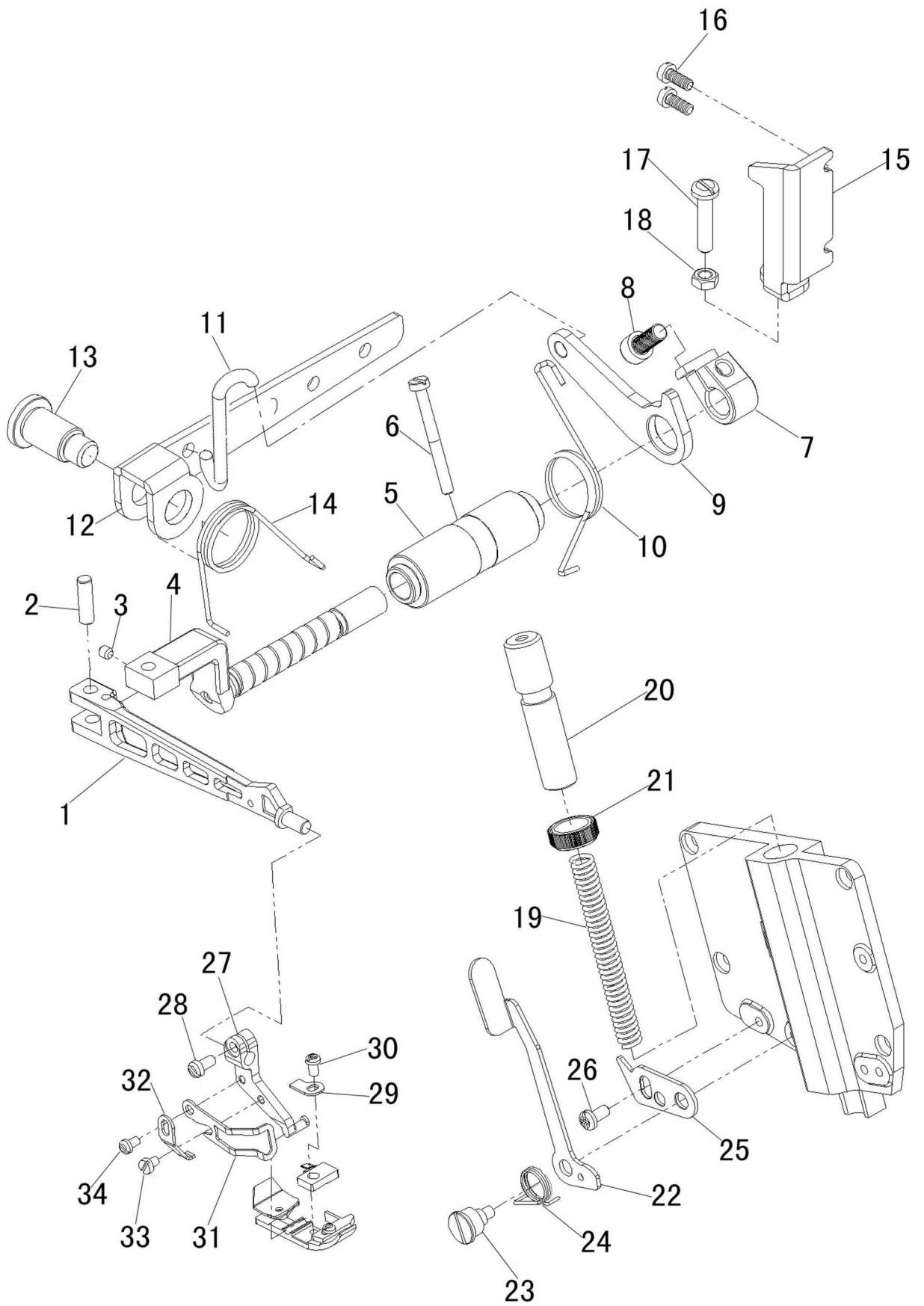
序号 No.	件号 Pars No.	名称	Description	数量 Number
1	10026720	差动调节连杆	LINK	1
2	10026774	差动调节曲柄	LEVER	1
3	10009164	螺钉M6×12	BOLT	1
4	10009624	轴位螺钉M5	SCREW	1
5	10026652	差动调节轴	SHAFT	1
6	10009608	O型圈	O RING	1
7	10026768	调节杆	LEVER	1
8	10026645	螺纹销	SCREW	1
9	10026710	弹簧	SPRING	1
10	10009558	轴位螺钉M5	SCREW	1
11	10026769	差动调节指示板	REGULATOR PLATE	1
12	10009052	螺钉M4×8	SCREW	3
13	10009221	限位块	STOPPER	2
14	10003083	垫圈	WASHER	2
15	10010554	螺钉M4×6	SCREW	2
16	10009218	微调螺柱	ADJUSTING BAR	1
17	10009216	指示标贴	SEAL	1
18	10009205	微调螺柱限位弹簧	SPRING	1
19	10009203	微调螺母	PIN	1
20	10003231	挡圈	RING	1
21	10009565	螺母	NUT	1
22	10009564	垫圈	SPRING	1
23	10009562	螺钉M4.5	SCREW	1



切刀机构

KNIFE DRIVE MECHANISM

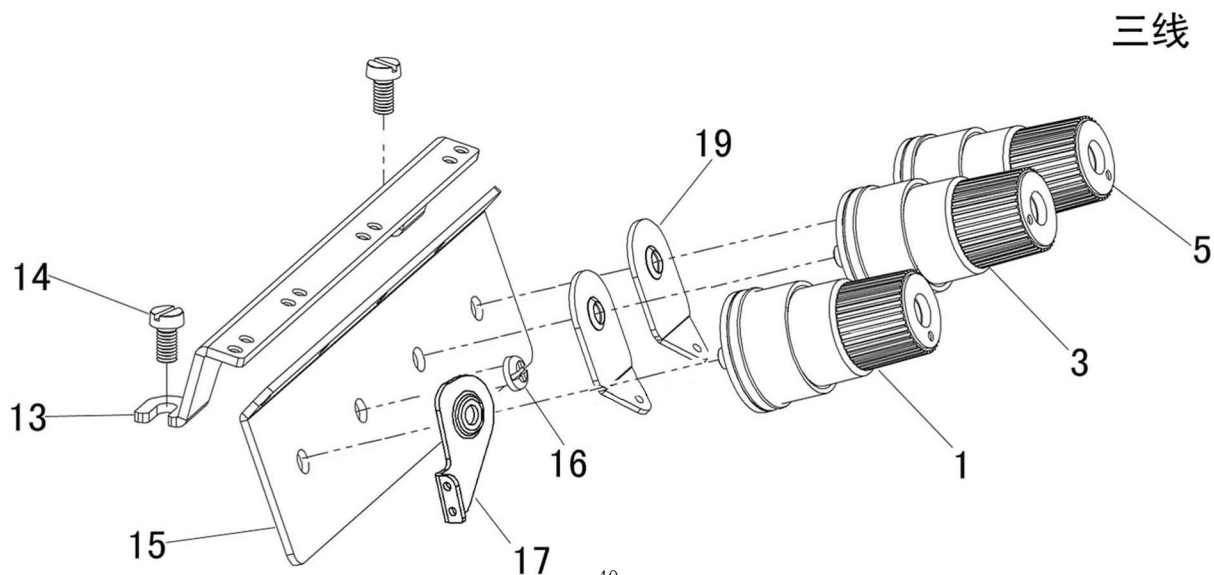
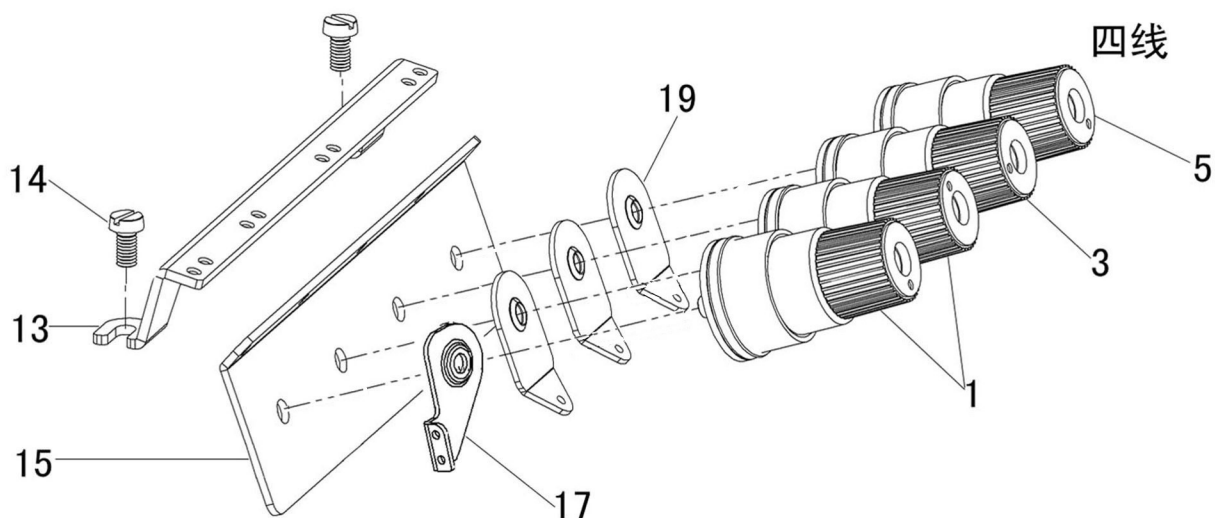
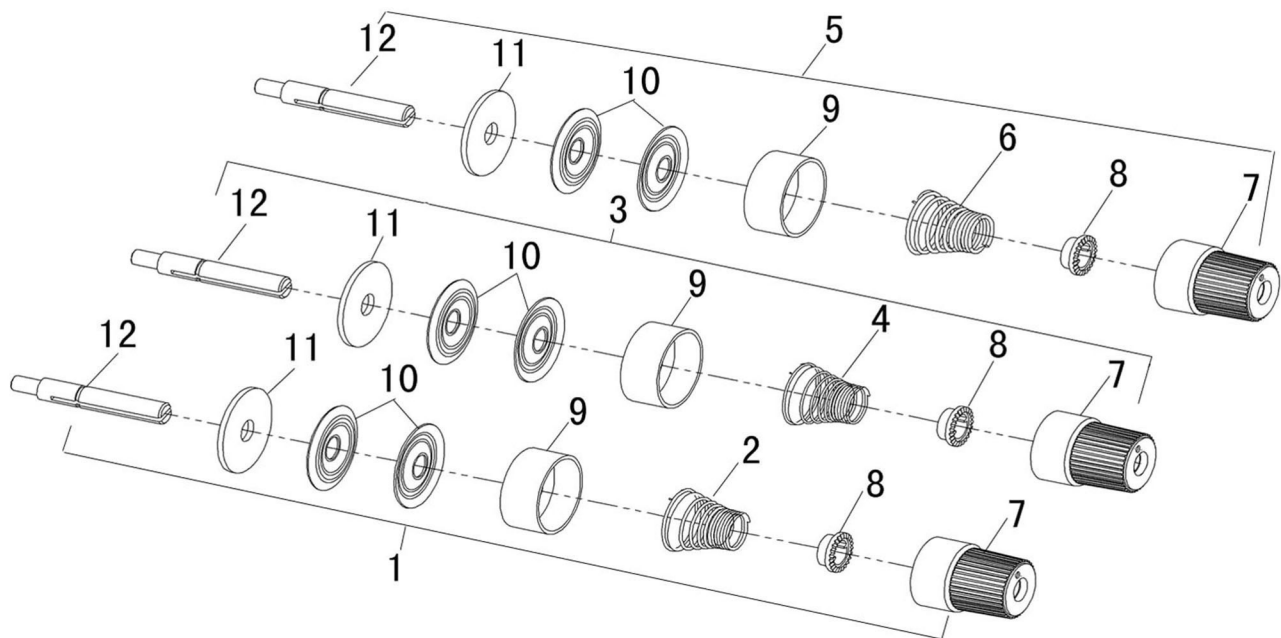
序号 No.	件号 Pars No.	名称	Description	数量 Number
1	10002942	上刀传动连杆	CONNECTION	1
2	10002939	螺钉M4×15.5	SCREW	2
3	10009434	上刀轴曲柄	CRANK	1
4	10009164	螺钉M6×12	BOLT	1
5	10009432	直针连杆销	PIN	1
6	10009109	螺钉M4×6	SCREW	1
7	10026654	上刀轴	UPPER KNIFE LEVER	1
8	10009071	密封圈	OIL SEAL	1
9	10009078	上刀轴挡圈	COLLAR	1
10	10009076	螺钉M6×5	SCREW	2
11	10009611	上切刀	UPPER KNIFE	2
12	10009115	螺钉M3.5×8	SCREW	1
13	10009068	上刀架	UPPER KNIFE CLAMP	1
14	10009070	上刀架紧固销	PIN	1
15	10009037	螺钉M4×12	SCREW	1
16	10026716	下刀	LOWER KNIFE	1
17	10026662	下刀压板	LOWER KNIFE CLAMP	1
18	10002881	螺钉M4×8	SCREW	1
19	10026641	下刀架	LOWER KNIFE HOLDER	1
20	10009074	内六角紧定螺钉M4×4	SCREW	1
21	10026713	弹簧	SPRING	1
22	10026767	弹簧挡板	COVER	1
23	10009600	螺钉M3×6	SCREW	1
				1



压脚机构

PRESSER FOOT MECHANISM

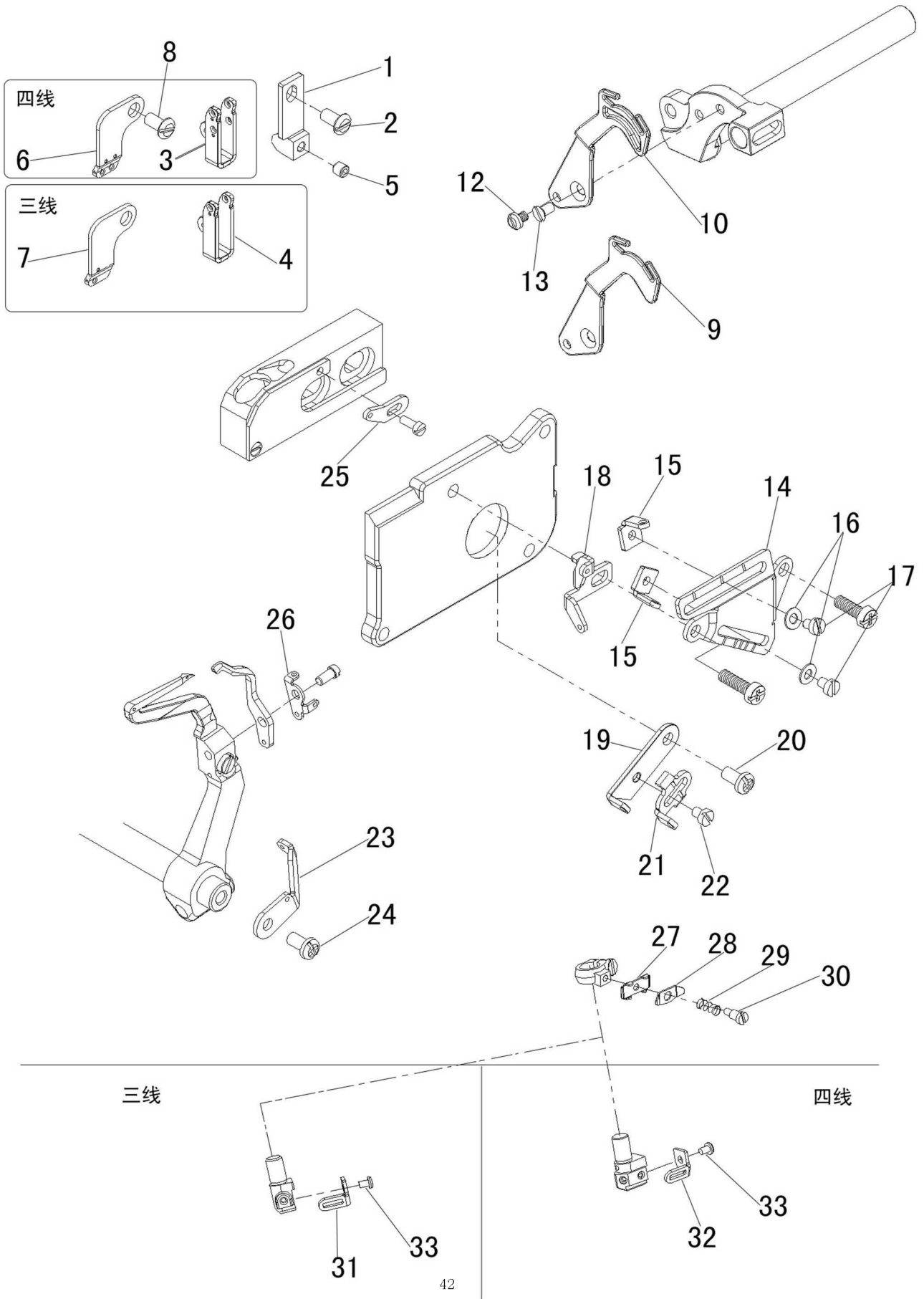
序号 No.	件号 Pars No.	名称	Description	数量 Number
1	10009030	压脚臂	PRESSER ARM	1
2	10009319	销	PIN	1
3	10014216	螺钉M4×4	SCREW	1
4	10009032	压脚轴	SHAFT	1
5	10009034	压脚轴套	BUSHING	1
6	10009225	螺钉M4×40	SCREW	1
7	10009617	拾压脚曲柄	COLLAR	1
8	10009616	螺钉M6×14	BOLT	1
9	10013288	拾压脚连杆	LEVER	1
10	10026711	弹簧	SPRING	1
11	10009622	拾压脚拉杆	LINK	1
12	10009158	拾压脚杠杆	LEVER	1
13	10009621	螺钉M10	SCREW	1
14	10009036	杠杆扭簧	SPRING	1
15	10009159	制动板	STOPPER	1
16	10009104	螺钉M4×10	SCREW	2
17	10009623	螺钉M5×24	SCREW	1
18	10009467	螺母	NUT	1
19	10009557	弹簧	SPRING	1
20	10008915	调压螺钉	ADJUSTING SCREW	1
21	10008916	调压螺母	NUT	1
22	10009472	压脚扳手	LEVER	1
23	10009474	轴位螺钉M4	SCREW	1
24	10009473	弹簧	SPRING	1
25	10008914	挡板	STOPPER	1
26	10010595	螺钉M4×8	SCREW	1
27	10002629	压脚连杆柄	HOLDER	1
28	10009115	螺钉M3.5×8	SCREW	1
29	10002625	弹簧压板	FLAT SPRING	1
30	10003192	螺钉C3×5.45	SCREW	1
31	10002628	护指架	FINGER GUARD	1
32	10002626	限位板	STOPPER	1
33	10009529	螺钉M3×4	SCREW	1
34	10011882	螺钉M3×5	SCREW	1



线夹机构

THREAD TENSION MECHANISM

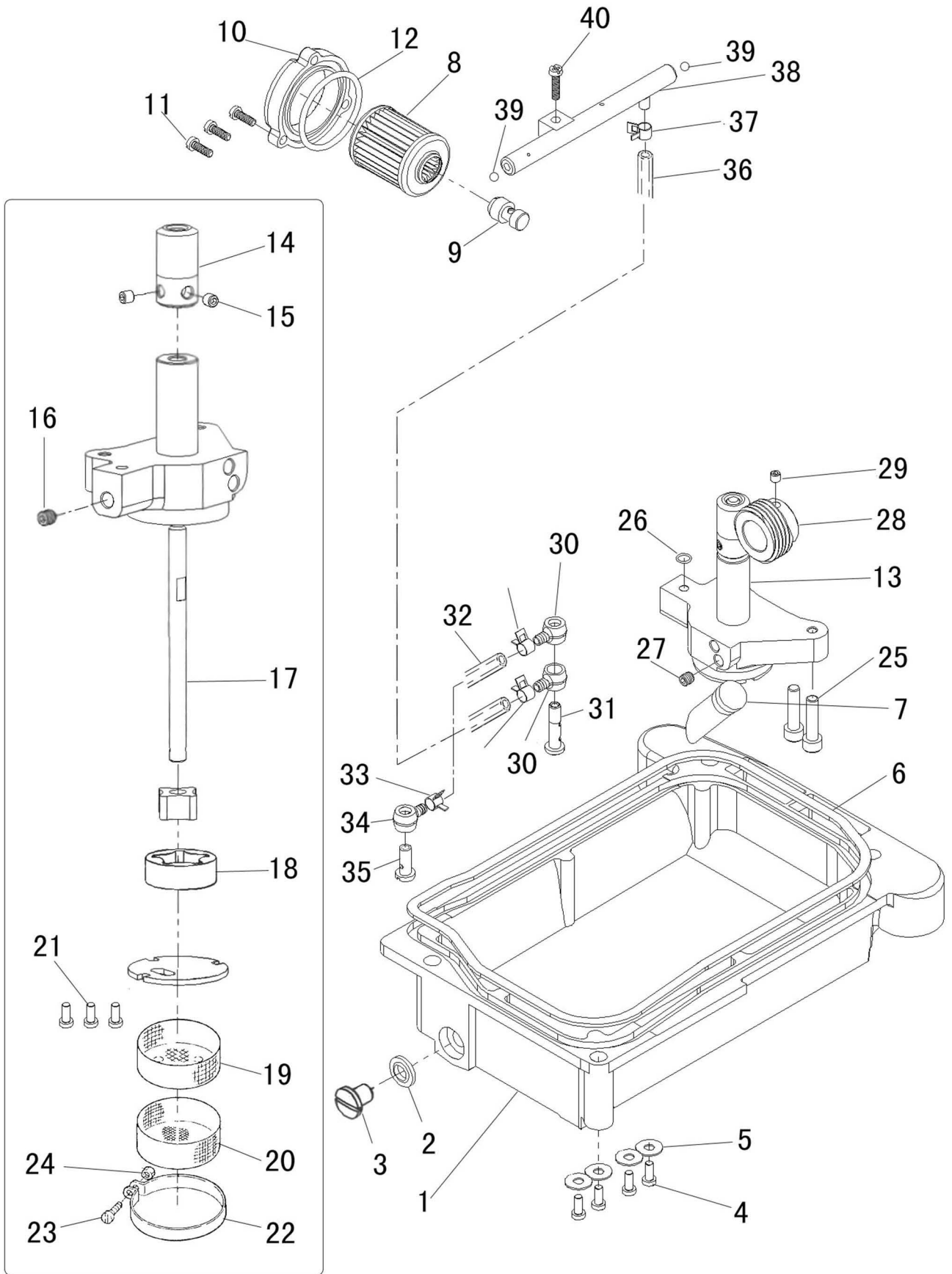
序号 No.	件号 Pars No.	名称	Description	数量 Number
1	10008901	直针夹线器组件	TENSION SPRING ASSY	1
2	10009534	弹簧(强)	SPRING (HEAVY)	1
3	10009604	上弯针夹线器组件	TENSION SPRING ASSY	1
4	10009532	弹簧(弱)	SPRING (LIGHT)	1
5	10008902	下弯针夹线器组件	TENSION SPRING ASSY	1
6	10009533	弹簧(中)	SPRING (MEDIUM)	1
7	10002538	夹线螺母	KNOB	1
8	10003111	防松垫	RATCHET	1
9	10002575	夹线碗	SPRING SHIELD	1
10	10003116	夹线盘	DISC	2
11	10003117	布垫	FELT	1
12	10003112	螺钉	SCREW STUD	1
13	10008904	过线架	THREAD GUIDE	1
14	10009556	螺钉M4×6	SCREW	2
15	10008962	夹线器座	THREAD GUIDE	1
16	10010595	螺钉M4×7.5	SCREW	1
17	10008903	夹线器二孔过线板	THREAD TENSION GUIDE	3
18	10008901	直针夹线器组件	TENSION SPRING ASSY	2
19	10003115	过线板	THREAD TENSION GUIDE	4



挑线与过线机构

THREAD TAKEUP & THREAD GUIDE

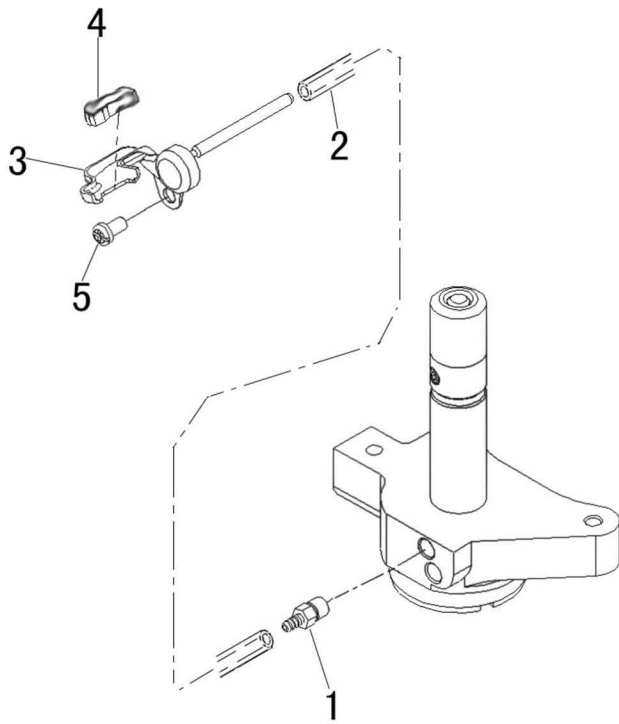
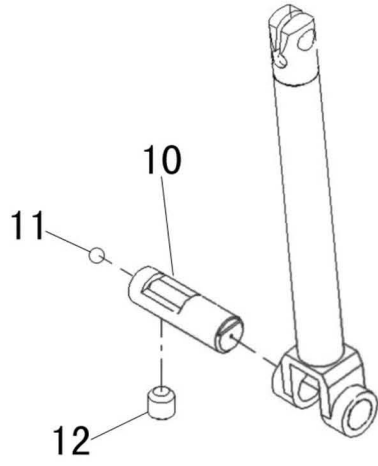
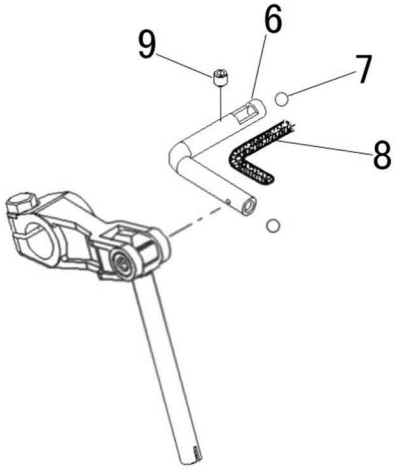
序号 No.	件号 Pars No.	名称	Description	数量 Number
1	10009015	挑线夹固定架	BRACKET	1
2	10010594	螺钉M4×8	SCREW	1
3	10009058	挑线夹组件（三线）	THREAD GUIDE	1
4	10009058	挑线夹组件（四线）	THREAD GUIDE	1
5	10009074	螺钉M4×4	SCREW	1
6	10009014	直针过线板（三线）	THREAD GUIDE	1
7	10009014	直针过线板（四线）	THREAD GUIDE	1
8	10010594	螺钉M4×8	SCREW	1
9	10026732	挑线架（三线）	NEEDLE THREAD TAKE UP	1
10	10026732	挑线架（四线）	NEEDLE THREAD TAKE UP	1
11	10026732	挑线架（四线厚料）	NEEDLE THREAD TAKE UP	1
12	10009600	螺钉M3×6	SCREW	1
13	10009626	螺钉M3×6	SCREW	1
14	10009154	弯针下过线板架	BRACKET	1
15	10009013	弯针小过线板	THREAD GUIDE	2
16	10009599	垫圈	WASHER	2
17	10009529	螺钉M3×4	SCREW	2
18	10026761	上弯针过线板	THREAD GUIDE	1
19	10009147	上弯针轴内过线板	THREAD TAKE UP	1
20	10010595	螺钉M4×8	SCREW	1
21	10009012	上弯针轴外过线板	THREAD GUIDE	1
22	10009529	螺钉M3×4	SCREW	1
23	10026759	下弯针过线板1	THREAD TAKE UP	1
24	10002924	螺钉M4×6	SCREW	1
25	10026760	上弯针小过线板	THREAD GUIDE	1
26	10026762	下弯针过线板2	THREAD GUIDE	1
27	10009341	下夹线板	THREAD RETAINER BRACKET	1
28	10009384	上夹线板	THREAD RETAINER	1
29	10009400	夹线簧	SPRING	1
30	10009383	螺钉M2	SCREW	1
31	10003431	针夹头过线板	THREAD GUIDE	1
32	10009339	针夹头过线板	THREAD GUIDE	1
33	10009422	螺钉M2×3	SCREW	1



润滑机构

LUBRICATION MECHANISM

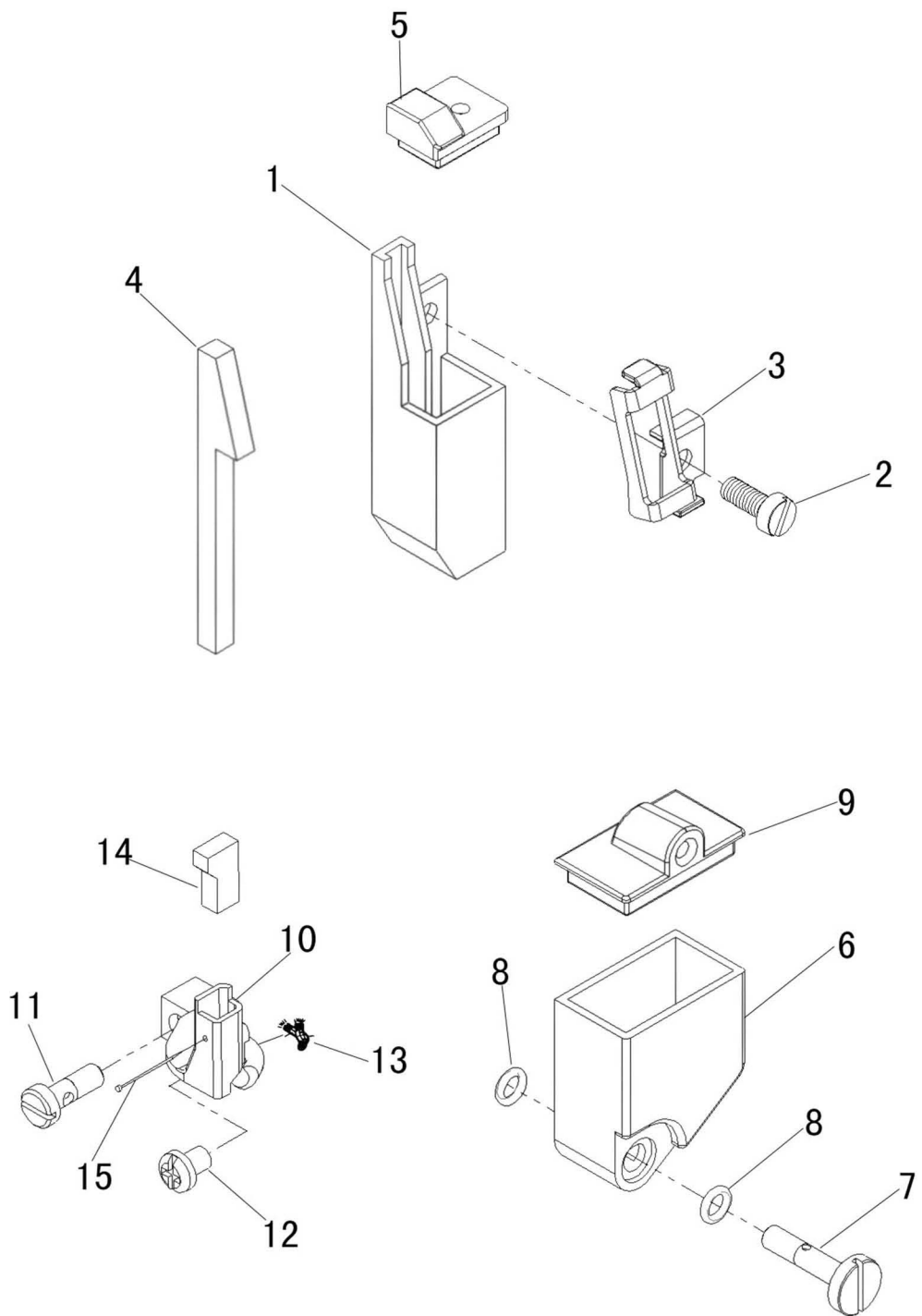
序号 No.	件号 Pars No.	名称	Description	数量 Number
1	10026688	油盘	OIL RESERVOIR ASSY	1
2	10009263	垫圈组件	WASHER	1
3	10009264	螺钉H11×12	SCREW	1
4	10009095	螺钉M5×12	BOLT	4
5	10009447	垫圈	WASHER	4
6	10026750	油盘垫	GASKET	1
7	10026763	油窗	OIL SIGHT GAUGE	1
8	10014236	滤油器组件	FILTER ELEMENT	1
9	10026644	螺钉接头	JOINT	1
10	20008187	滤油器盖	COVER	1
11	10009037	螺钉M4×12	SCREW	3
12	10026756	滤油器密封圈	O RING	1
13	10026648	油泵组件	PUMP ASSY	1
14	10002607	斜齿轮	WORM WHEEL	1
15	10012162	螺钉C8×4.5	SCREW	2
16	10010907	内六角紧定螺钉M6×6	SCREW	1
17	10003196	油泵轴组件	ROTOR (INSIDE) SHAFT	1
18	10003197	油泵外转子	ROTOR (OUTSIDE)	1
19	10003201	内过滤网	FILTER (INSIDE)	1
20	10003199	外过滤网	FILTER (OUTSIDE)	1
21	10009589	螺钉M3.5×6	SCREW	3
22	10003200	紧固圈	CLAMP	1
23	10003203	螺钉M3×8	SCREW	1
24	10003025	螺母	NUT	1
25	10009103	螺钉M4×16	BOLT	2
26	10003826	O型圈	O RING	1
27	10010907	内六角紧定螺钉M6×6	SCREW	1
28	10009362	蜗杆	WORM	1
29	10012162	内六角紧定螺钉M5×5	SCREW	1
30	10009588	塑料接头	JOINT	2
31	10026642	螺钉接头	JOINT SCREW	1
32	10007796	油管	TUBE	1
33	10011471	油管夹	CLAMP	2
34	10009588	塑料接头	JOINT	1
35	10009592	螺钉接头	JOINT SCREW	1
36	10007796	油管	TUBE	1
37	10011471	油管夹	CLAMP	2
38	10026764	分油杆	OIL DISTRIBUTOR ASSY	1
39	10003648	钢球	BALL	2
40	10010688	螺钉M4×16	SCREW	1



润滑部件(2)

LUBRICATION MECHANISM (2)

序号 No.	件号 Pars No.	名称	Description	数量 Number
1	10009591	螺钉接头	JOINT	1
2	10007800	油管	TUBE	1
3	10009122	针杆回油管架	JOINT	1
4	10008991	油毡	FELT	1
5	10010595	螺钉M4×5.5	SCREW	1
6	10008992	针杆给油销	PIPE ASSY	1
7	10009039	针杆给油销橡胶塞	PLUG	2
8	10008090	油线	OIL WICK	1
9	10009074	螺钉M4×4	SCREW	1
10	10012322	给油销	PIPE ASSY	1
11	10009826	钢球	BALL	1
12	10009074	螺钉M4×4	SCREW	1

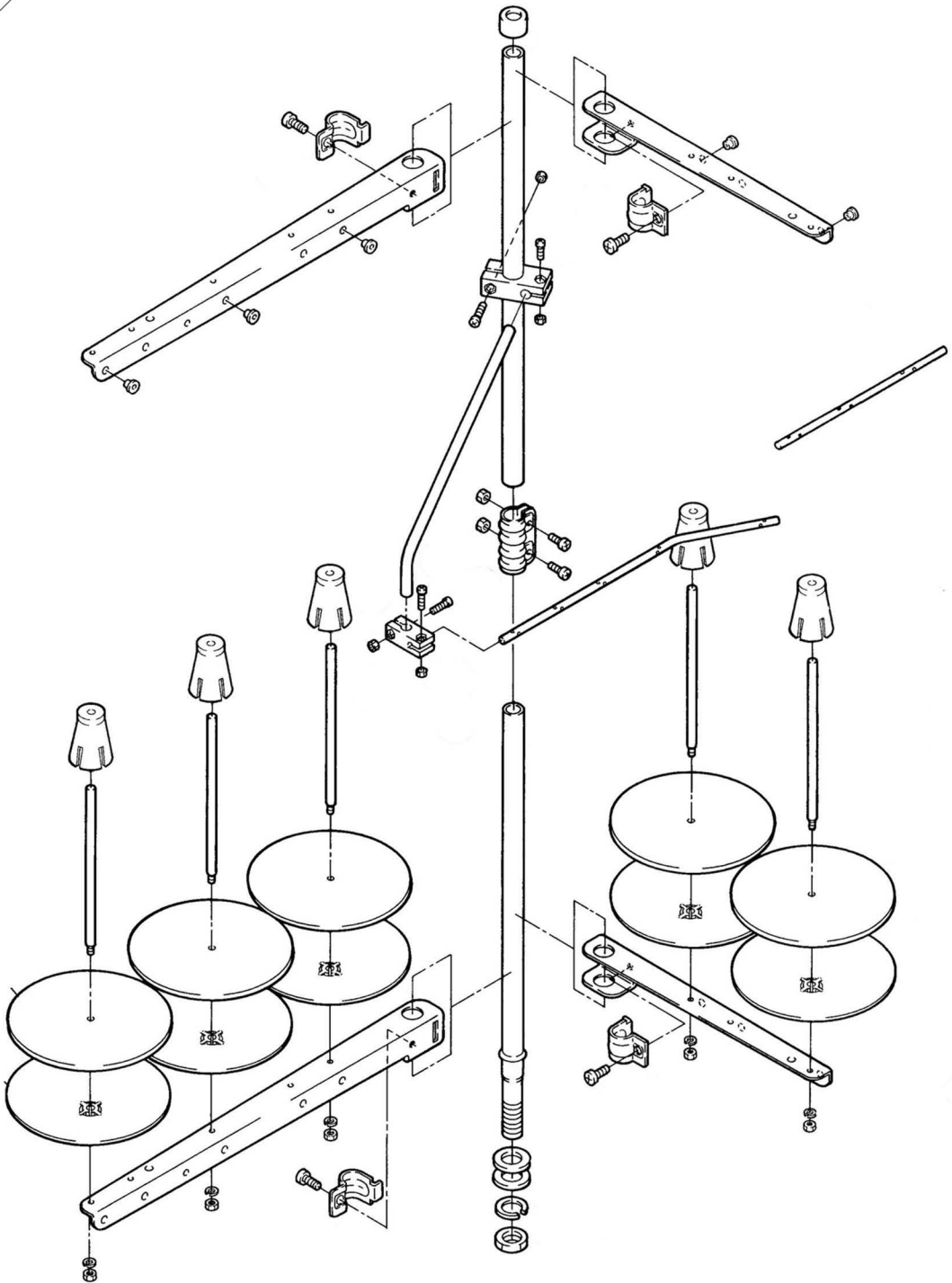


H. R. 装置

H. R. DEVICE

序号 No.	件号 Pars No.	名称	Description	数量 Number
1	10009094	上硅油盒	SILICONE OIL RESERVOIR (UPPER)	1
2	10009104	螺钉M4×10	SCREW	1
3	10008923	毛毡压板	THREAD GUIDE	1
4	10008924	毛毡	FELT	1
5	10008925	盒盖	COVER	1
6	10026635	硅油盒	SILICONE OIL RESERVOIR (LOWER)	1
7	10026646	螺钉接头	JOINT SCREW	1
8	10003824	O型圈	O RING	2
9	10026757	硅油盒盖	COVER	1
10	10026745	下硅油盒	NEEDLE COOLER	1
11	10026647	螺钉接头	JOINT SCREW	1
12	10003065	螺钉M4×5	SCREW	1
13	10008072	油线	OIL WICK	1
14	10026749	毛毡	FELT	1
15		大头针	PIN	1

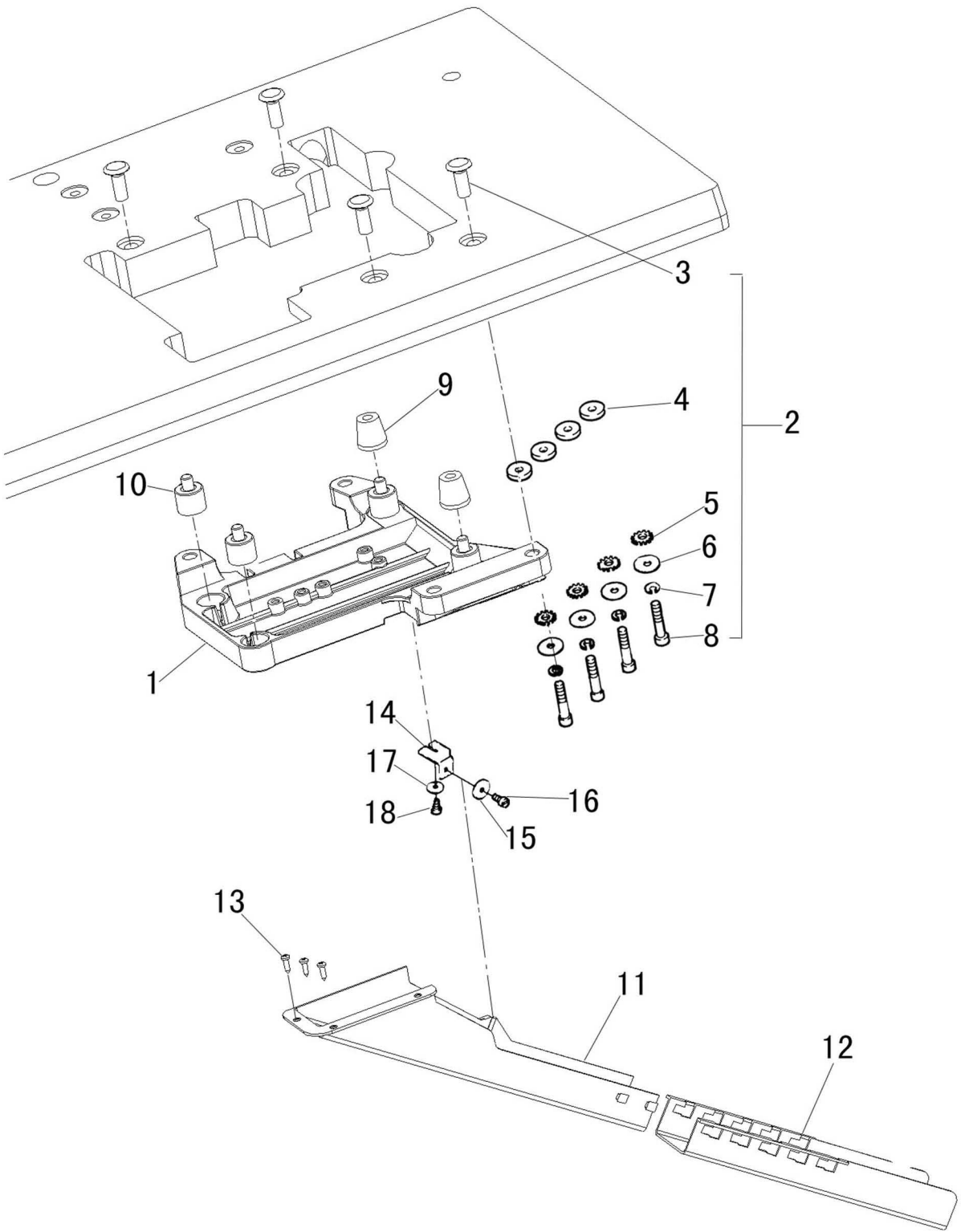
1



线架

THREAD STAND











序号 No.	件号 Pars No.	名称	Description	数量 Number
1	10007906	线架部件	THREAD STAND ASSY	1
2				
3				
4				
5				
6				
7				
8				
9				
10				
11				
12				
13				
14				
15				
16				
17				
18				
19				
20				
21				
22				
23				
24				
25				
26				
27				
28				
29				
30				
31				
32				
33				
34				
35				
36				
37				
38				








油盘托架

OIL TANK BRACKET

序号 No.	件号 Pars No.	名称	Description	数量 Number
1	10026689	安装托板	REST BOARD	1
2		安装托板安装组件	BOLT ASSY	1
3	10009596	螺套	NUT	4
4	10026758	橡胶垫	SPACER	4
5	10009273	垫圈	WASHER	4
6	10009272	垫圈	WASHER	4
7	10003331	垫圈	WASHER	4
8	10003106	螺钉M8×45	BOLT	4
9	10009510	托盘橡胶垫	CUSHION RUBBER	2
10	10011067	支机定位胶垫	CUSHION RUBBER ASSY	2
11	10002891	下料槽上节	WASTE CHUTE (TOP)	1
12	10003225	下料槽下节	WASTE CHUTE (LOWER)	1
13	10008197	自攻螺钉3.5	SCREW	3
14	10028836	支撑板	BRACKET	1
15	10012813	垫圈	WASHER	1
16	10003039	螺钉M4×10	SCREW	1
17	10012813	垫圈	WASHER	1
18	10003039	螺钉M4×10	SCREW	1

专用件目录表 GAUGE PARTS LIST									
									
机型	针板	主送料牙组 件	主送料牙	辅助送料牙	差动送料牙	压脚	吐线舌	上弯针	下弯针
MODEL	NEEDLE PLATE	MAIN FEED DOG ASSY.	MAIN FEED DOG	AUX. FEED DOG	DIFF. FEED DOG	PRESSER FOOT	PRESSER FOOT FINGER.	UPPER LOOPER	LOWER LOOPER
952T-13	10026687	10026666	10026667	10026668	10026669	10026670	10002624	10026664	10026663

				
机型	上刀	下刀	针夹	机针
MODEL	UPPER KNIFE	LOWERR KNIFE	NEEDLE HOLDER	NEEDLE
952T-13	10009611	10026716	10009340	10004899



中国·中捷缝纫机股份有限公司
ZOJE SEWING MACHINE CO., LTD.

地址：浙江玉环大麦屿开发区

ADD: DAMAIYU ZONE, YUHUAN, ZHEJIANG, 317604 CHINA

免费咨询电话：TEL: 800-857-6715