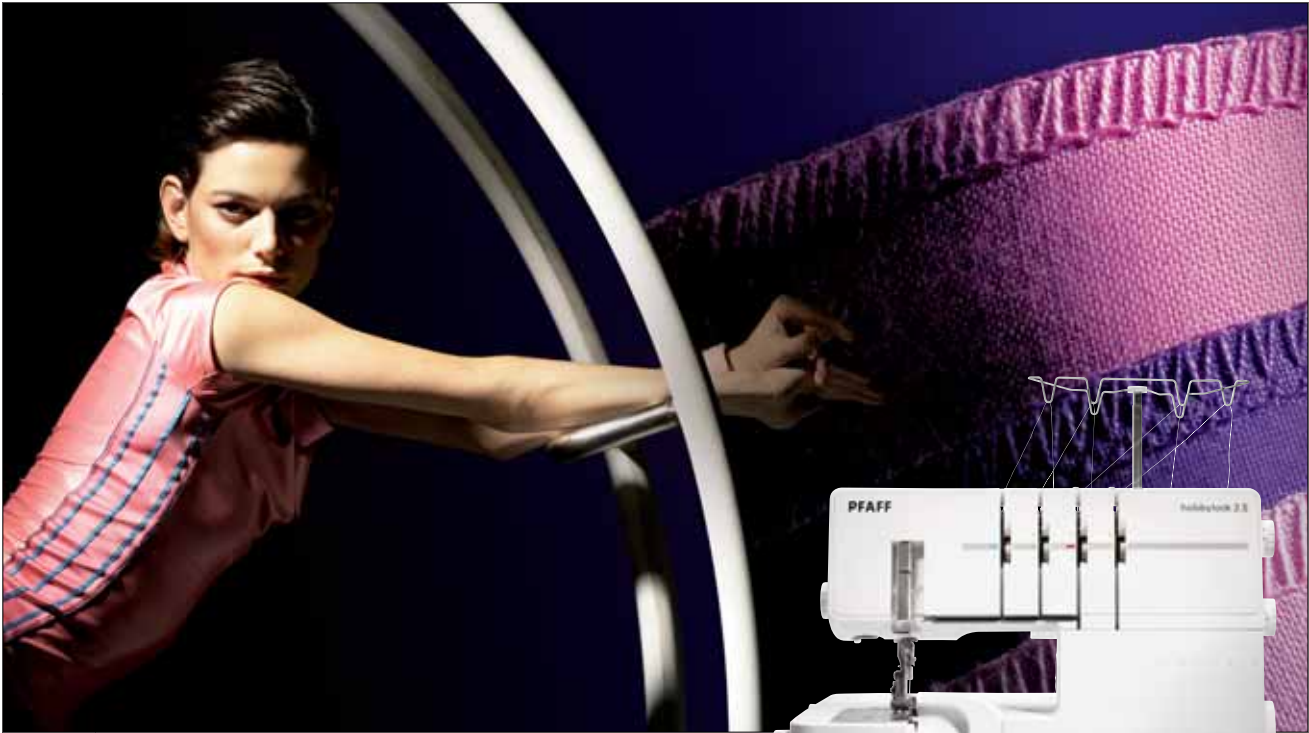


# PFAFF®

MASTER THE BASICS


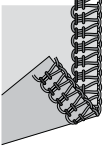
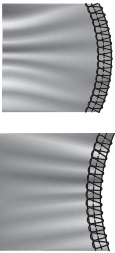


## hobbylock™ 2.5

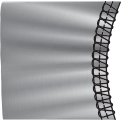
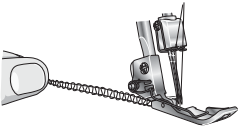
### SELL UP FEATURES FROM hobbylock™ 2.0 OVERLOCK MACHINE

- **LARGE SEWING SPACE** – more space for your projects.
- **AUTOMATIC TENSION DIAL** – tension is set automatically when a stitch is selected.
- **TENSION RELEASE** – threads pull easily when the presser foot is up.
- **2 SEWING SPEEDS** – easily adjustable when you want more precision for different techniques.
- **BUILT-IN TWO THREAD CONVERTER** – easy conversion to 2-thread stitches.
- **UPPER CUTTER MOUNTED FROM BELOW** – convenient when threading. No need to disengage.




Technique	Sewing	Talk About
<p><b>4 – THREAD OVERLOCK</b></p> 	<p><b>Set:</b> Insert two new INSPIRA™ overlock needles, size 90</p> <ul style="list-style-type: none"> <li>• Thread with good quality serger thread in the needles and loopers.</li> </ul> <p><b>Select:</b> 4-Thread overlock stitch.</p> <ul style="list-style-type: none"> <li>• Auto tension dial: A</li> </ul> <p><b>Set:</b> Differential feed: 1</p> <ul style="list-style-type: none"> <li>• Stitch length: 2.5</li> </ul> <p><b>Fabric:</b> Medium weight woven fabric</p> <p><b>Sew:</b> Fold the fabric in half</p> <ul style="list-style-type: none"> <li>• Sew a seam along the folded edge; cutting a little as you sew.</li> <li>• Open the fabric to show the customer the seam.</li> </ul>	<ul style="list-style-type: none"> <li>▶ Why Buy a Serger.</li> <li>▶ The PFAFF® hobbylock™ 2.5 overlock machine sews twice as fast as a regular sewing machine.</li> </ul>
<p><b>4 – THREAD OVERLOCK</b></p> 	<p><b>Select:</b> 4-Thread overlock stitch</p> <ul style="list-style-type: none"> <li>• Auto tension dial: A</li> </ul> <p><b>Set:</b> Differential feed: 1</p> <ul style="list-style-type: none"> <li>• Stitch length: 2.5</li> </ul> <p><b>Fabric:</b> Sweatshirt fleece and ribbing (medium weight stretch fabric)</p> <p><b>Sew:</b> Fold the ribbing in half lengthwise</p> <ul style="list-style-type: none"> <li>• Stretch the ribbing across the corner of the sweatshirt fleece.</li> <li>• Sew, cutting off the whole corner as you sew .</li> <li>• Fold up the bottom edge as for a blindhem.</li> <li>• Sew, feeding the fabric so that the fold is just next to the cutter and the needles just catch the fold.</li> <li>• Open the hem out to show that you have a fast casing for elastic.</li> </ul>	<ul style="list-style-type: none"> <li>▶ See how all your edges will be perfectly finished without a chance of raveling.</li> <li>▶ Stretch the finished seam; talk about how a 4-thread overlock stitch stretches more than a regular sewing machine overcast stitch sewn on fabrics with stretch.</li> <li>▶ Garments are so fast and easy to sew when using the PFAFF® hobbylock™ 2.5 overlock machine.</li> </ul>
<p><b>DIFFERENTIAL FEED</b></p> 	<p><b>Select:</b> 4-Thread overlock stitch</p> <ul style="list-style-type: none"> <li>• Auto tension dial: A</li> </ul> <p><b>Set:</b> Differential feed: 0.6</p> <ul style="list-style-type: none"> <li>• Stitch length: 2.5</li> </ul> <p><b>Fabric:</b> Sweater knit (medium weight stretch fabric)</p> <p><b>Sew:</b> Sew along one edge of the sweater knit, cutting very little off the edge as you sew.</p> <p><b>Set:</b> Differential feed: 2 .0</p> <ul style="list-style-type: none"> <li>• Stitch length: 2.5</li> </ul> <p><b>Sew:</b> Sew along the opposite edge of the sweater knit.</p>	<ul style="list-style-type: none"> <li>▶ The differential feed feature is great for sewing on knits.</li> <li>▶ The differential feed system consists of two sets of feed dogs arranged one behind the other. When the amount of feed by the front dogs is changed in relation to the feed by the rear feed dogs it will “stretch” or “gather” the fabric.</li> <li>▶ Adjust the differential feed to prevent stretching of knit fabrics and puckering of lightweight fabrics.</li> </ul>



Technique	Sewing	Talk About
<p><b>GATHERING</b></p> 	<p><b>Select:</b> 4-thread overlock stitch</p> <ul style="list-style-type: none"> <li>• Auto tension dial: A</li> </ul> <p><b>Set:</b> Differential feed 1</p> <ul style="list-style-type: none"> <li>• Stitch length 2.5</li> </ul> <p><b>Fabric:</b> Quilter's cotton (light to medium weight woven fabric)</p> <p><b>Sew:</b> Sew a 3" (7-8 cm) thread chain</p> <p><b>Set:</b> Lengthen the stitch length to the longest stitch (4)</p> <p><b>Sew:</b> Place the calico strip along the side of the cutter</p> <ul style="list-style-type: none"> <li>• Sew along the edge of the fabric, cutting a little bit as you sew and hold your finger behind the foot so that the fabric bunches into your finger as you sew. This creates more even, tighter gathers. Stop sewing at the end of the fabric.</li> </ul> <p><b>Set:</b> Shorten the stitch length to 2.5</p> <p><b>Sew:</b> Sew another 3" chain at the end</p> <ul style="list-style-type: none"> <li>• Adjust gathers</li> </ul>	<ul style="list-style-type: none"> <li>▶ You can gather fabrics quickly on the PFAFF® hobbylock™ 2.5 overlock machine by increasing the needle thread tension, stitch length and the differential feed adjustments.</li> <li>▶ This gather is adjustable and much more consistent than drawing up basting threads on a regular sewing machine.</li> <li>▶ Gathering this way is a great time saver. It finishes the edge at the same time that it gathers.</li> </ul>
<p><b>TUBE-TURN</b></p> 	<p><b>Select:</b> 4-thread overlock stitch</p> <ul style="list-style-type: none"> <li>• Auto tension dial: A</li> </ul> <p><b>Set:</b> Differential feed: 1.0</p> <ul style="list-style-type: none"> <li>• Stitch length: 2.5</li> </ul> <p><b>Fabric:</b> Tricot (light weight stretch fabric)</p> <p><b>Sew:</b> Sew a 6 – 8" (15-20 cm) thread chain. Bring chain around the foot to the front of the overlock machine. Do NOT cut chain!</p> <ul style="list-style-type: none"> <li>• Fold tricot around the chain.</li> <li>• Position fabric under the foot with the fold to the left and the excess fabric to the right. Make sure you can see the fold to the left of the foot.</li> <li>• Sew, cutting off most of the fabric. Leave the chain attached to the fabric.</li> <li>• Pull the thread chain and the attached fabric through the tube.</li> </ul>	<ul style="list-style-type: none"> <li>▶ It is easy to turn any sort of tube, even a small spaghetti strap or belt loop with the PFAFF® hobbylock™ 2.5 overlock machine.</li> <li>▶ Use the thread chain as a built-in pull!</li> </ul>



Technique	Sewing	Talk About
<p><b>ROLLED EDGE</b></p> 	<p><b>Select:</b> 3-thread rolled edge</p> <ul style="list-style-type: none"> <li>• Auto tension dial: B</li> </ul> <p><b>Set:</b> Remove the left needle</p> <ul style="list-style-type: none"> <li>• Set the stitch finger in "R" position</li> <li>• Differential feed 1.0</li> <li>• Stitch length 1.0</li> </ul> <p><b>Fabric:</b> Quilter's cotton (light to medium weight woven fabric)</p> <p><b>Sew:</b> Sew a rolled edge cutting a little as you sew.</p> <p>Set machine back to a 4-thread overlock and ensure that you have a balanced stitch.</p>	<ul style="list-style-type: none"> <li>▶ The rolled edge is a fast and easy way to finish ruffles, napkins, or tablecloths.</li> <li>▶ The rolled edge makes a wonderful finish with heavier decorative threads on home decor projects such as valances and pillows.</li> </ul>