

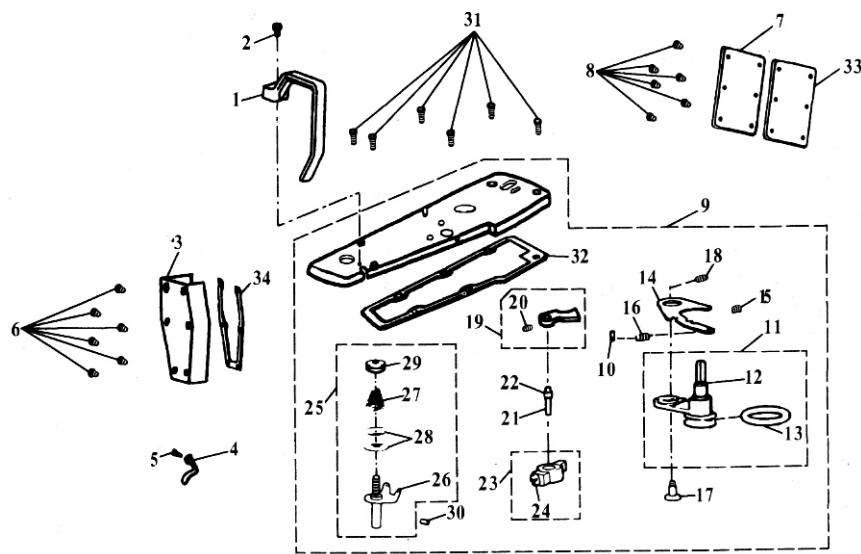
ZOJE

ZJ20U-Series

Single needle
lockstitch zig-zag sewing machine

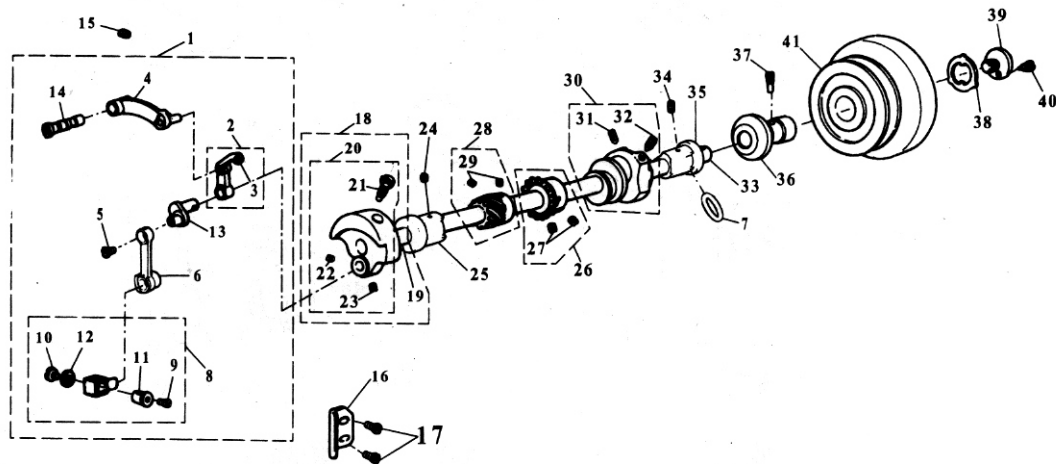
PART LIST

FACE PLACE, ARMTOP COVER, ARM SODE COVER



1	GK191-8	1	Thread take-up guard
2	GS378-8	1	Thread take-up guars screw
3	GR406/3-8	1	Face plate comp
4	GW242-8	1	Face plate thread guide
5	GS374-8	1	Face plate thread guide screw
6	GS375-8	6	Face plate screw
7	GK160-8	1	Arm side cover
8	GS132-8	6	Arm side cover set screw
9	GK187-8	1	Arm top cover comp
10	GO206-8	1	Bobbin winder bracket spacer
11	GR780/9-8	1	Bbobin winder bracket comp.
12	GW172-8	1	Bobbin winder friction wheel spring
13	GO284-8	1	Bobbin winder friction o-ring
14	GR375-8	1	Bobbin winder bracket regulating plate
15	GW173-8	1	Bobbin winder bracket regulating plate spring
16	GW174-8	1	Bobbin winder bracket spring
17	GX218-8	1	Bobbin winder bracket hinge stud
18	GX182-8	1	Bobbin winder bracket hinge set screw
19	GR726-8	1	Bobbin winder lever comp.
20	GS378-8	1	Bobbin winder lever set screw
21	GZ246-8	1	Bobbin winder lecer stud
22	GO218-8	1	Bobbin winder lever stud ring
23	GR484/2-8	1	Bobbin winder regulating comp.
24	GS222-8	1	Bobbin winder regulating screw
25	GR778/6-8	1	Bobbin winder tension comp.
26	GR234/5-8	1	Bobbin winder tension stud comp.
27	GW175-8	1	Bobbin winder tension spring
28	GR375-8	2	Bobbin winder tension disc
29	GL175-8	1	Bobbin winder tension regulating thumb nut
30	GS275-8	1	Bobbin winder tension set screw
31	GS680-8	6	Arm top cover screw
32	GK188-8	1	Arm top cover packing
33	GK190-8	1	Arm side cover packing
34	GK186-8	1	Face plate packing

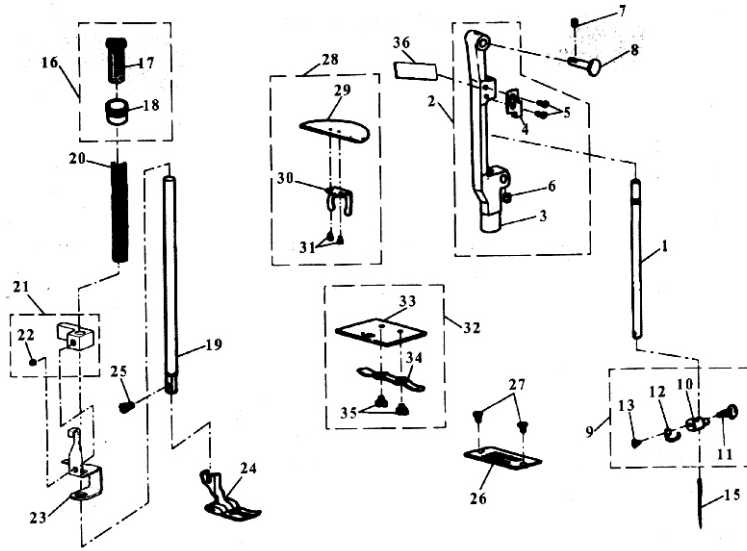
THREAD TAKE-UP ARM ,HANDWHEEL



NO.	PART NO.	QTY	DESCRIPTION
1	GR1431/12-8	1	Thread take-up comp.
2	GH200-8	1	Thread take-up lever with thread eyelet bushing
3	GH143-8	1	Thread take-up lever thread eyelet bushing
4	GH141-8	1	Thread take-up lever link
5	GS166-8	1	Needle bar connecting link cap screw
6	GH160-8	1	Needle bar connecting link
7	GO511-8	1	Arm shaft(horizonta)flanged bushing(back)o-ring
8	GR1433/5-8	1	Needle bar connecting stud comp.
9	GS160-8	1	Needle bar set screw
10	GS161-8	1	Needle bar connecting stud hinge pin screw
11	GZ142-8	1	Needle bar connecting stud hinge pin
12	GO141-8	1	Needle bar connecting stud hinge pin washer
13	GH144-8	1	Thread take-up crank
14	GX144-8	1	Thread take-up lever link hinge pin.
15	GS147-8	1	Thread take-up lever link hinge pin set screw
16	GK254-8	1	Needle bar connecting link guide
17	GS132-8	2	Needle bar connecting link guide screw
18	GR1434/5-8	1	Arm shaft (horizontal)and needle bar crank comp.
19	GZ248-8	1	Arm shaft (horizontal)
20	GR1435/4-9	1	Needle bar crank comp.
21	GS168-8	1	Needle bar crank position screw
22	GS404-8	1	Thread take-up crank position screw
23	GS404-8	1	Thread take-up crank set screw
24	GS169-8	1	Arm shaft (horizontal)flanged bushing(front)set screw
25	GO143-8	1	Arm shaft (horizontal)flanged bushing(front)
26	GR1436/3-8	1	Arm shaft (horizontal)bevel gear comp.
27	GS167-8	2	Arm shaft (horizontal)bevel gear set screw
28	GR1437/3-8	1	Arm shaft (horizontal)worm gear comp.
29	GS170-8	2	Arm shaft (horizontal)worm gear set screw
30	GR1438-8	1	Feed and feed lifting eccentric comp.
31	GS251-8	1	Feed and feed lifting eccentric position screw
32	GS251-8	1	Feed and feed lifting eccentric set screw
33	GT153-8	1	Feed and feed lifting eccentric ring
34	GS277-8	1	Arm shaft (horizontal)flanged bushing (g back) set screw
35	GO510-8	1	Arm shaft (horizontal)flanged bushing (back)
36	GO209-8	1	Clamp stop motion flanged bushing
37	GS380-8	1	Clamp stop motion flanged gushing set screw
38	GE380-8	1	Clamp stop motion clamp washer

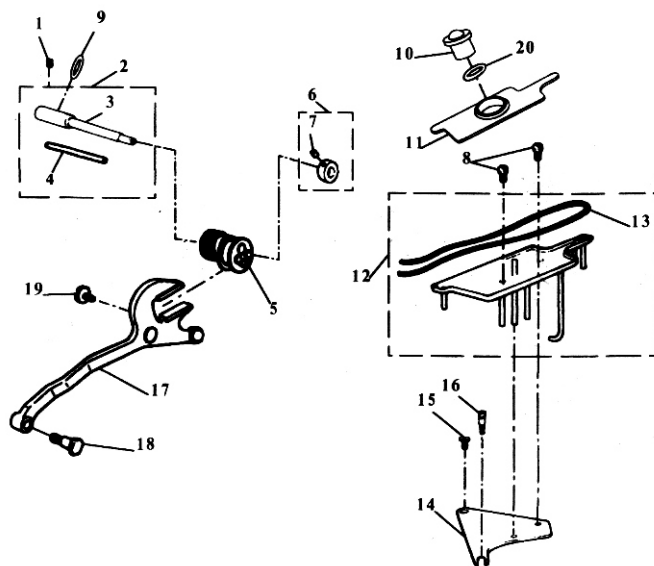
NO.	PART NO.	QTY		DESCRIPTION
39	GP151- 8	1		Clamp stop motion clamp screw
40	GR279-8	1		Clamp stop motion stop screw
41	GP142-8	1		Hondwhee(l for motor drive)

NEEDLE BAR ,PRESSER BAR ,THROATPLATE



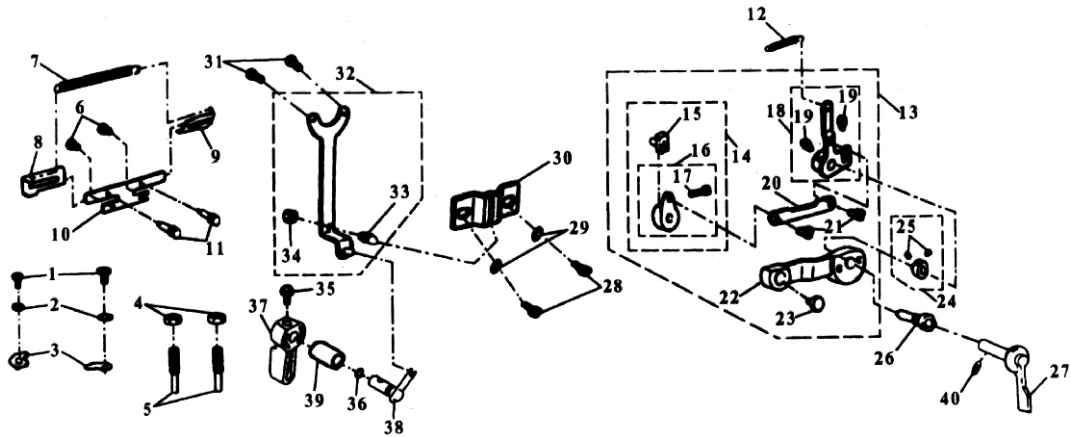
NO.	PART NO.	QTY	DESCRIPTION
1	GZ223-8	1	Needle bar (hollow)
2	GR485/5-8	1	Needle bar fame comp.
3	GR251-8	1	Needle barr fame
4	GR255-8	1	Needle bar timing indicator plate
5	GS163-8	2	Needle bar timing indicator plate screw
6	GS158-8	1	Zigzag stitch regulator eccentric set screw
7	GS164-8	1	Needle bar frame pin set screw
8	GX143-8	1	Needle bar frame pin
9	GR484/4-8	1	Needle clamp comp.
10	GR467-8	1	Needle clamp
11	GS290-8	1	Needle clamp thumb screw
12	GR466-8	1	Needle clamp thread guard
13	GS289-8	1	Needle clamp thread guard set screw
15	GV130 -8	1	Needle(size#14)
16	GR1440/2-8	1	Presser regulating thumb screw nut comp.
17	GS384-8	1	Presser regulating ththumb screw
18	GC178-8	2	Presser regulating thumb screw nut
19	GZ187-8	1	Presser bar
20	GW153-8	1	Presser bar Spring
21	GR1395-8	1	Presser bar guide B racket comp.
22	GS232-8	1	Presser bar guide Bracket screw
23	GR1394-8	1	Presser bar lifting lever bracket
24	GR465/4-8	1	Presser foot (Spring Hinged) Comp.
25	GS231-8	1	Presser foot screw
26	GM156-8	1	Throat plate
27	GS338-8	2	Throat plate screw
28	GR477/4-8	1	Bed plate comp.
29	GM130-8	1	Bed plate
30	GW130-8	1	Bed plate bracket
31	SG255-8	2	Bed plate bracket screw
32	GR476/4-8	1	Bed slide comp.
33	GM132-8	1	Bed slide
34	GW131-8	1	Bed slide spring
35	GM156-8	2	Bed slide spring screw
36	GR1384-8	1	Needle bar frame oil felt

ZIGZAG TRINGULAR CAM, HOOK ADVANCING CRANK



NO.	PART NO.	QTY	DESCRIPTION
1	GS147-8	1	Zigzag triangulat cam shaft set screw.
2	GR1441/2-8	1	Zigzag triangulat cam shaft comp. Zigzag
3	GZ219-8	1	triangulat camp shaft
4	GZ221-8	1	Zigzag triangular camp shaft oil wick
5	GR145/6-8	1	Zigzag triangulat cam p shaft oil comp.
6	GR1442/3-8	1	Zigzag triangular cam shaft coller comp.
7	GS223-8	2	Zigzag triangular cam shaft coller set
8	GS132-8	1	screw Oil reservoir set screw
9	GR1386-8	1	Zigzag triangulat camp shaft o-ring
10	GR1386-8	1	Oil gauge window
11	GR1390-8	1	Oil reservoir top cover
12	GR1387-8	1	Oil Reservoir comp.
13	GR1391-8	1	Oil reservoir oil wick
14	GK195-8	1	Oil reservoir plate
15	GS256-8	1	Oil reservoir plate set screw(back)
16	GS212-8	1	Oil reservoir plate set screw(front)
17	GR288-8	1	Zigzag stich regulator fork
18	GX155-8	1	Zigzag stich regulator fork eccentric connection pin
19	GS291-8	1	Bight amplitude side block cap screw
20	GR978-8	1	Oil gauge window o-ring

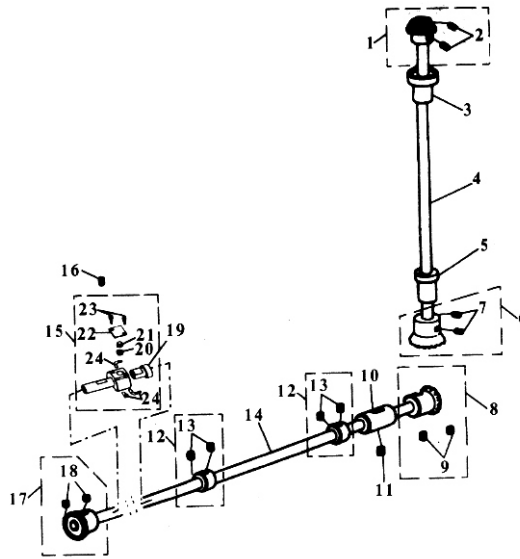
ZIGZAC TRIANGULAR CAM, HOOK ADVANCING CRANK



NO.	PART NO.	QTY	DESCRIPTION
1	GS256-8	2	Bight amplitude stop plate (left) (right) screw
2	GO174-8	2	Bight amplitude stop plate (left) (right) washer
3	GR289-8	2	Bight amplitude stop plate (left) (right)
4	GL153-8	2	Bight and L-C-R position lever arm regulating screw nut
5	GS215-8	2	Bight and L-C-R position lever arm regulating screw
6	GS213-8	2	Bight amplitude regulating plate holder set screw
7	GW142-8	1	Bight amplitude regulating plate spring
8	GR290-8	1	Bight amplitude regulating plate (left)
9	GR291-8	1	Bight amplitude regulating plate (right)
10	GR294-8	1	Bight amplitude regulating plate holder
11	GS383-8	2	Bight mplitude re egulating plate thumb screw
12	GW141-8	1	Bight mplitude slide block srnk spring
13	GR521-8	1	Bight mplitude slide block srnk and guide comp.
14	GR519-8	1	Bight mplitude slide block srnk and slideblock
15	GO140-8	1	Bight amplitude slide block
16	GR298-8	1	Bight amplitude slide block srnk guide comp.
17	GS185-8	1	Bight amplitude slide blocksrnk guides sdut set screw
18	GR292/3-8	1	Bight amplitude silde block srnk guide comp.
19	GS214-8	2	Bight amplitude slide block srnk set screw
20	Gh178-8	1	Bight amplitude slide block srnk link
21	GS216-8	2	Bighat mplitude slide block srnk link hinge screw
22	GR296-8	1	Bighat nd L-C-R positing lever arm
23	GX154-8	1	Bighat mplitude slide block guide stud
24	GR1442/3-8	1	Bighat mplitude slide block srnk sha btf ushing coller comp
25	GR218-8	2	Bight amolitude slide block srnk shaft bushing coller screw
26	GO286-8	1	Bight amplitude slide block crank shaft bushing
27	GR731-8	1	Bight amplitude slide block crank shaft knob comp.
28	GS278-8	2	Bight amplitude L-C-R positing block set screw
29	GO217-8	2	Bight amplitude L-C-R positing block washer
30	GR468-8	1	Bight amplitude L-C-R positing block
31	GS223-8	2	Bight mplitude L-C-R positing lever set screw
32	GR1385-8	1	Bight mplitude L-C-R positing lever comp.
33	GS281-8	1	Bight mplitude L-C-R positing lever screw pin
34	GL163-8	1	Bight mplitude L-C-R positing lever screw pin nut
35	GS322-8	1	Bight amplitude L-C-R positing lever thumb stud screw
36	GR621-8	1	Bight amplitude L-C-R positing lever thumb washer
37	GR619-8	1	Bight amplitude L-C-R positing lever thumb stud
38	GZ263-8	1	Hand component shaft

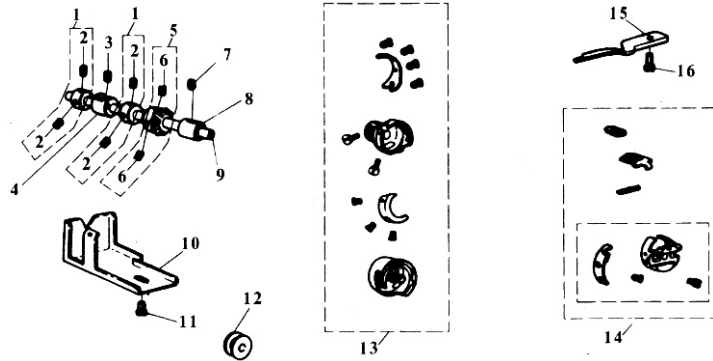
NO.	PART NO.	QTY		DESCRIPTION
39 40	GO512-8 GO420-8	1 1		Sleeve forhd component haft O-ring of spanner of swaying needle

ARM SHAFT (UPRIGHT), ROTATING HOOK DRIVE SHAFT



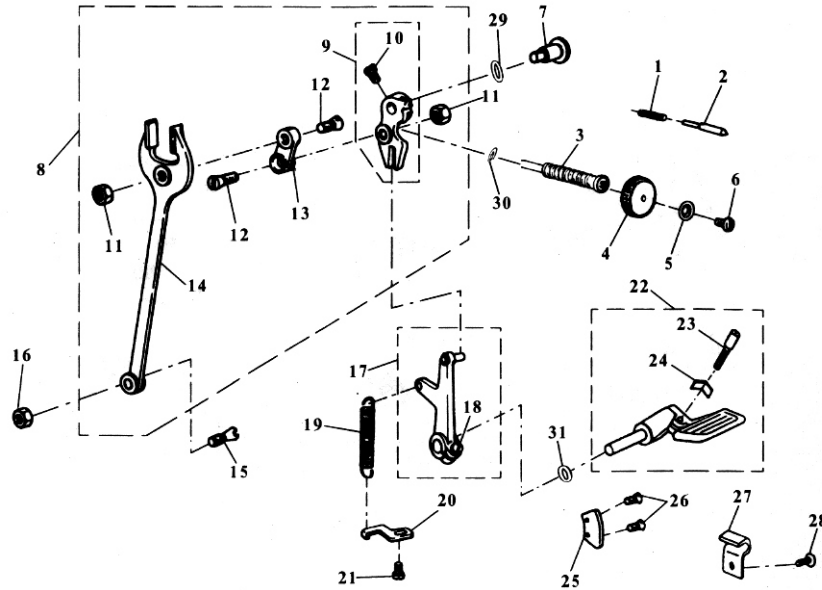
NO.	PART NO.	QTY	DESCRIPTION
1	GR1444/3-8	1	Arm s haft (upright) bevel ear (upper) comp.
2	GS199-8	2	Arm shaft (upright) bevel ear (upper) set screw.
3	GO228-8	1	Arm shaft (upright) bevel ear (upper)
4	GZ224-8	1	Arm shaft (upright)
5	GO229-8	1	Arm shaft (upright) bushing (lower)
6	GR1445/3-8	1	Arm shaft (upright) bushing (lower) comp.
7	GS199-8	2	Arm shaft (upright) bushing (lower) set screw
8	GR1446/3-8	1	Rotating hook drive shaft screw gear (back) comp.
9	GS199-8	2	Rotating hook drive shaft screw gear (back) set screw
10	GO231-8	1	Rotating hook drive shaft bushing (back)
11	GS147-8	1	Rotating hook drive shaft bushing (back) set screw
12	GR1447/3-8	2	Rotating hook drive shaft retainer collar comp.
13	GS199-8	4	Rotating hook drive shaft retainer collar set screw
14	GZ225-8	1	Rotating hook drive
15	G0162-8	1	Rotating hook drive shaft bushing(front)
16	GS147-8	1	Rotating hook drive shaft bushing (front) setscrew
17	GR1448/3-8	1	Rotating hook drive shaft bevel ear (front) comp.
18	GS199-8	2	Rotating hook drive shaft bevel ear (front) set screw
19	GZ168-8	1	Oil pump shaft
20	GZ269-8	1	Oil pump stopper
21	GW272 -8	1	Oil pump stopper spring
22	GK196 -8	1	Oil pump stopper pressure plate
23	GS687 -8	2	Oil pump stopper pressure plate screw
24	GR1396 -8	1	Oil pump tube

HOOK BOBBIN CASE



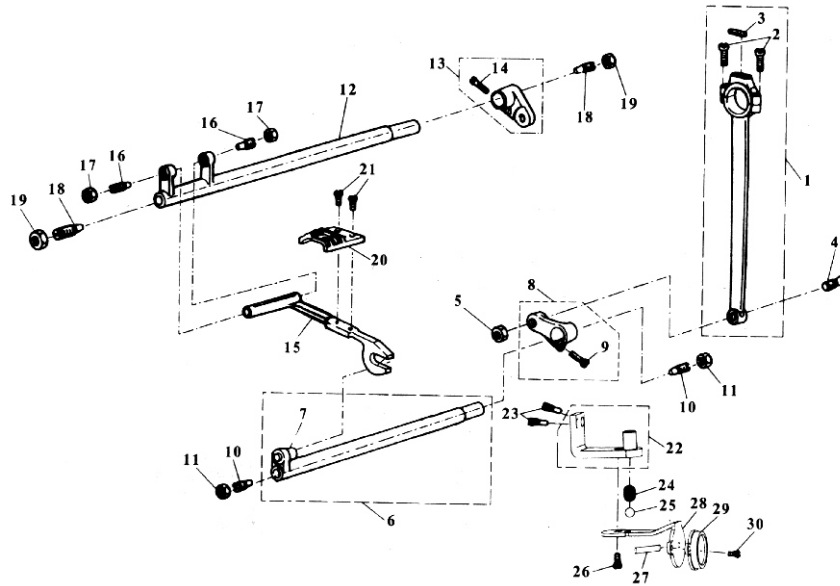
NO.	PART NO.	QTY	DESCRIPTION
1	GR1449/3-8	2	Rotating hook shaft retainer collar comp.
2	GS202-8	4	Rotating hook shaft retainer collar screw
3	GS201-8	1	Rotating hook shaft bushing (short) screw
4	GO165-8	1	Rotating hook shaft bushing (short)
5	GR1450/3-8	1	Rotating hook shaft bevel gear comp.
6	GS167-8	2	Rotating hook shaft bevel gear set screw
7	GS201-8	1	Rotating hook shaft bushing (long) screw
8	GO163-8	1	Rotating hook shaft gushing (long)
9	GZ164-8	1	Rotating hook shaft
10	GK130-8	1	Rotating hook shaft bevel gear cover
11	GS132-8	1	Rotating hook shaft gear cover screw
12	GN135-8	1	Rotating hook bobbin
13	GM131-8	1	Rotating hook asm
14	GN135-8	1	Rotating hook bobbin case holder comp.
15	GR278-8	1	Rotating hook bobbin case tension spring bracket
16	GS256-8	1	Rotating hook bobbin holder position bracket screw

HOOK, BOBBIN CASE



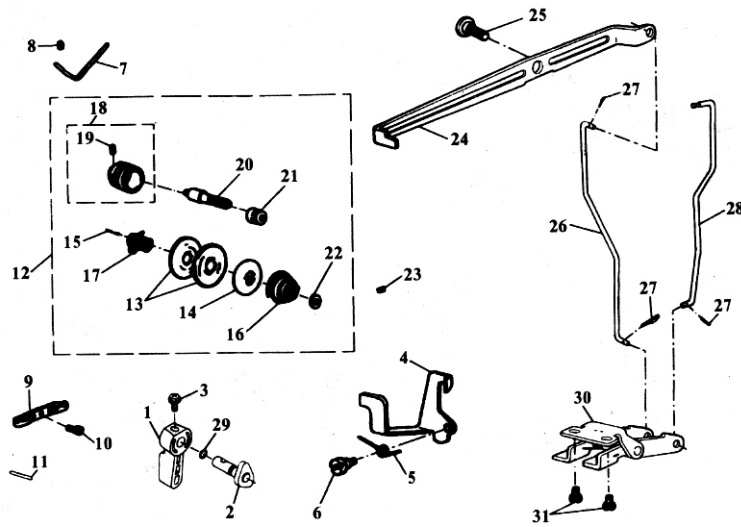
NO.	PART NO.	QTY	DESCRIPTION
1	GW167-8	1	Feed regulating stud lock pin sprign
2	GS685-8	1	Feed regulating stud lock pin
3	GS684-8	1	Feed regulating stud
4	GR738-8	1	Feed regulating dial
5	GO380-8	1	Feed regulating dial screw washer
6	GS387-8	1	Feed regulating dial screw
7	GX302-8	1	Feed regulating hinge stud
8	GR1452/2-8	1	Feed forked connection comp.
9	GR1451/2-8	1	Feed regulating comp.
10	GS263-8	1	Feed regulating hinge stud set screw
11	GC142-8	2	Feed connection lind hinge scrw nut
12	GS188-8	2	Feed connection link hinge scrw
13	GH157-8	1	Feed connection link
14	GR267-8	1	Feed forked connection
15	GS188-8	1	Feed forked connection hinge screw
16	GC142-8	1	Feed forked connection hinge screw nut
17	GR3412/2-8	1	Feed forked lever link comp.
18	GS142-8	1	Feed reverse lever link screw
19	GW166-8	1	Feed reverse lever return spring
20	GR339-8	1	Feed reverse lever return spring bracket
21	GS256-8	1	Feed reverse lever return spring bracket screw
22	GR735-8	1	Feed reverse lever screw
23	GS1453/3-8	1	Feed reverse lever adjusting screw
24	GW200-8	1	Feed reverse lever adjusting scrw friction
25	GR737-8	2	Reverse feed indicator plate
26	GS42	1	Reverse feed indicator plate set screw
27	GR736-8	1	Feed reverse liver adjusting screw stopper
28	GS386-8	1	Feed reverse lever adjusting screw stopper set screw
29	GO814-8	1	Feed reverse hinge stud o-ring
30	GR655-8	1	Feed regnlating stud o-ring
31	GO514-8	1	Feed reverse lever o-ring

FEED REGULATING DIAL, FEED REVERSE LEVER



NO.	PART NO.	QTY	DESCRIPTION
1	GR504-8	1	Feed lifting rock shaft rank connecting rod comp.
2	GS142-8	2	Feed lifting rock shaft rank connecting rod cap screw
3	GR268-8	1	Feed lifting rock shaft rank connecting rod cap pad (felt)
4	GS188-8	1	Feed lifting rock shaft rank connecting rod hinge screw
5	GC142-8	1	Feed lifting rock shaft rank connecting rod nut
6	GR269-8	1	Feed lifting rock shaft comp.
7	GZ151-8	1	Feed lifting rock shaft roller and stud
8	GH1454/2-8	1	Feed lifting rock shaft rank comp.
9	GS185-8	1	Feed lifting rock shaft rank clamping screw
10	GR743-8	2	Feed lifting rock shaft screw center
11	GS263-8	2	Feed lifting rock shaft screw center nut
12	GZ152-8	1	Feed rock shaft
13	GR1455/2-8	1	Feed rock shaft rank comp.
14	GS185-8	1	Feed rock shaft rank clamping screw
15	GR265-8	1	Feed bar
16	GS183-8	2	Feed bar screw center
17	GL140-8	2	Feed bar screw center nut
18	GR774-8	2	Feed rock shaft screw center
19	GS263-8	2	Feed rock shaft screw center nut
20	GS160-8	1	Feed dog
21	GS184-8	2	Feed dog screw
22	GK199-8	1	Holding yoke
23	GS690-8	2	Holding yoke fastening screw
24	GW274-8	1	Roller spring
25	GO598-8	1	Roller
26	GS688-8	1	Roller screw
27	GR1440-8	1	Oil suction pipe
28	GK198-8	1	Splashing yoke of oil
29	GR1404-8	1	Filter sieve
30	GS687-8	1	Filter sieve screw

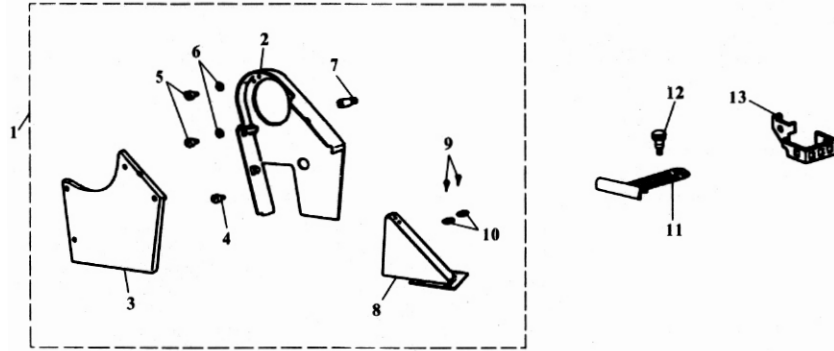
PRESSER BAR LIFTER, TENSION



NO.	PART NO.	QTY	DESCRIPTION
1	GR619-8	1	Presser bar lifter
2	GT160-8	1	Presser bar liften cam stud
3	GR621-8	1	Presser bar lifter screw
4	GK192-8	1	Tension releasing lever
5	GW135-9	1	Tension releasing lever spring
6	GS148-8	1	Tension releasing lever hinge screw
7	GS379-8	1	Thread retainer
8	GS139-7	1	Thread retainer set screw
9	GR231-8	1	Thread guard (upper)
10	GS223-8	1	Thread guard (upper) set screw
11	GX180-8	1	Thread guard pin
12	GR1456/11-8	1	Tension comp.
13	GR237-8	2	Tension disc
14	GR238-8	1	Tension releasing disc
15	GX132-8	1	Tension releasing pin
16	GW208-8	1	Tension spring
17	GW131-78	1	Tension take-up spring
18	GR1457/2-8	1	Tension take-up spring regulator comp.
19	GS147-8	1	Tension stud set screw
20	GS145-8	1	Tension stud
21	GL176-8	1	Tension releasing thumb nut
22	GR239-8	1	Tension releasing thumb nut washer
23	GS146-8	1	Tension take-up spring regulator screw
24	GZ204-8	1	Lifting lever
25	GS235-8	1	Lifting lever hinge screw
26	GR323-8	1	Lifting lever connecting rod
27	GS184-8	2	Lifting lever connecting rod pin
28	GZ206-8	1	Bight amplitude slide block crank knee operating connection
29	GR621-8	1	Presser bar lifter cam stud o-ring
30	GR328/10-8	1	Belcl rank comp.
31	GS683-8	2	Belcl rank bracket screw

NO.	PART NO.	QTY		DESCRIPTION
39	GK197-8	1		Two-way crank of pressure lift
40	GZ270-8	1		Pressr lift shaft
41	54754	1		Oil reservoir drain pulg screw gasket
42	454036-819	1		Oil reservoir drain pulg screw
43	368377	1		Oil pan seat cushion
44	GX305-8	2		Top pin of presser lift
45	368377	4		Machine head cushion
46	GR686-8	1		Oil pan seat cushion

ACCESSORIES AND ATTACHMENT



NO.	PART NO.	QTY	DESCRIPTION
1	*	1	Belt guard comp.
2	GR2331-8	1	Belt guard (upper)
3	GR2330-8	1	Belt guard (upper) cover
4	GS3342-8	1	Belt guard (upper) screw
5	GS3343-8	2	Belt guard (upper) screw washer
6	GO2332-8	2	Belt guard (upper) screw stud
7	GS3344-8	1	Belt guard (upper) screw stud
8	GR2332-7	1	Belt guard (lower)
9	GBS204-8	2	Belt guard (lower) wood screw
10	GBR210-8	2	Belt guard (lower) wood screw washer
11	FM105-8	1	Cloth guide
12	GS665-8	1	Cloth guide thumb screw
13	GR1000-8	1	Finger guard